

2022 FREDERICK COUNTY

# Human Needs Assessment

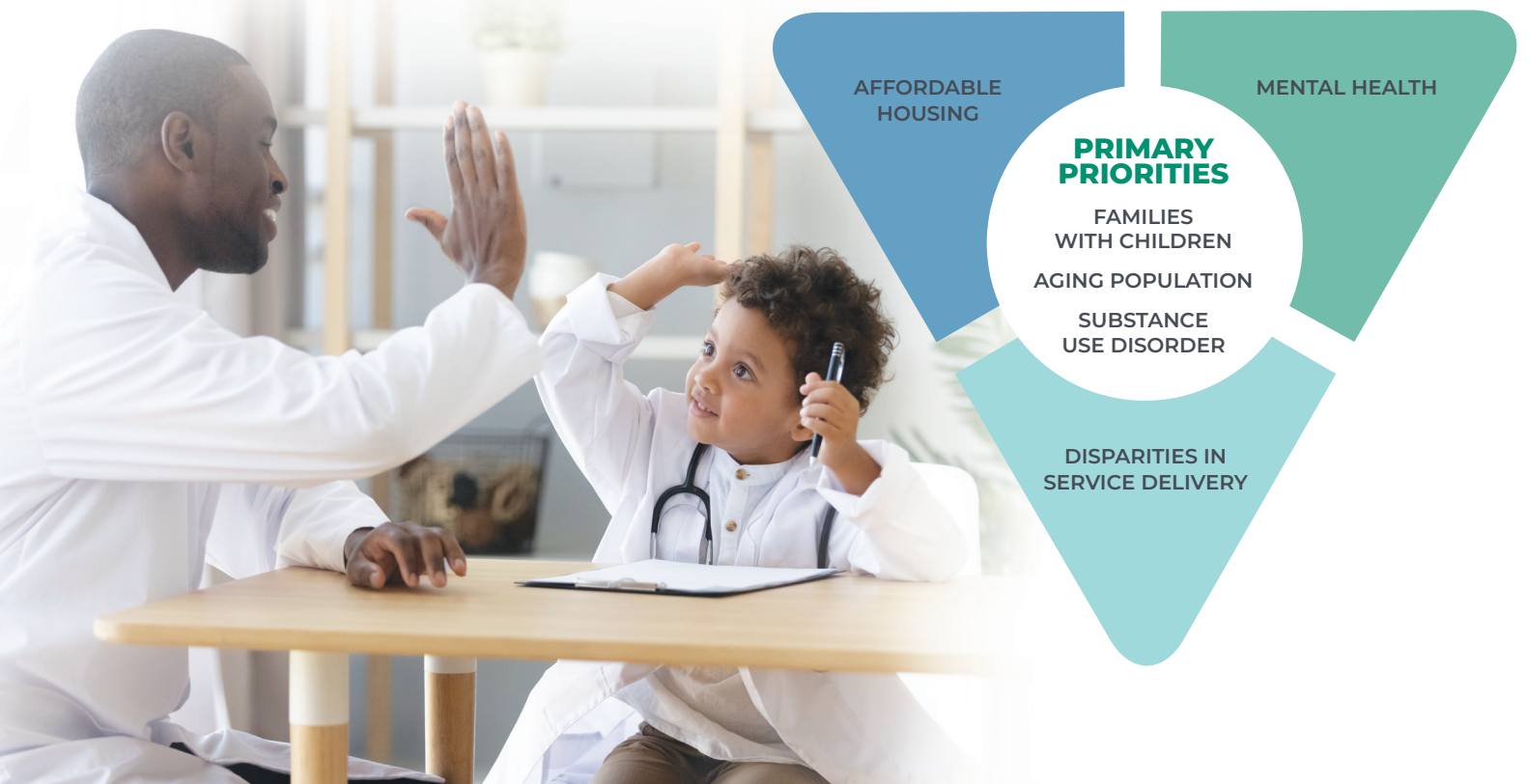


## A SUMMARY OF KEY FINDINGS AND STRATEGIC INITIATIVES

In 2018, the Community Foundation conducted a human needs assessment to shape its strategic funding initiatives for the next 10 years. Then, in March of 2020, our world changed as COVID-19 affected our communities and homes. In response to those changes, the Community Foundation updated its needs assessment in 2022 which has led us to focus on several emerging areas of need.

In addition to guiding the Community Foundation, the study also serves as a common reference for governments, nonprofits and other organizations that seek to improve the well-being of Frederick County.

Three significant areas of need were identified in the 2018 study — **supporting families with children, preparing for an aging population, and responding to substance use disorder.** We remain committed to addressing those target areas, but the recently completed update shows that there are new areas within those issues that we must also focus on: **supporting access to affordable housing, addressing mental health needs and alleviating disparities in service delivery.** Grantmaking is driven by data from the human needs assessments.





## NEED: SUPPORTING FAMILIES WITH CHILDREN

2018 key findings highlight the need to:

- Continue or increase opportunities for all families with children to thrive in Frederick County.
- Continue or increase stability and opportunities for growth in families with children whose household earnings are below the ALICE (Asset Limited, Income Constrained, Employed) threshold.



## NEED: PREPARING FOR AN AGING POPULATION

2018 key findings highlight the need to:

- Continue or increase the ability for seniors to age in place in the most optimal and appropriate environment.
- Continue or increase access to information and resources on aging for current seniors, rising seniors, and their caregivers.



## NEED: RESPONDING TO SUBSTANCE USE DISORDER (SUD)

2018 key findings highlight the need to:

- Continue or increase access to timely and qualified treatment and recovery options for individuals experiencing SUD.
- Continue or increase provision of SUD-related education and prevention programs.
- Continue or increase capacity or collecting and analyzing data related to people impacted by SUD and the programs that serve them.

## 2022 UPDATE HIGHLIGHTS THE NEED TO ELEVATE THE FOLLOWING

Beginning in FY2023, the Community Foundation's strategic initiatives will focus on supporting families with children, preparing for an aging population and responding to substance use disorder, with preference given to these cross-cutting issues identified in the 2022 update:

- **SUPPORT ACCESS TO AFFORDABLE HOUSING**
- **ADDRESS MENTAL HEALTH NEEDS**
- **ALLEVIATE DISPARITIES IN SERVICE DELIVERY**

The Community Foundation launched its unrestricted endowment campaign to establish a flexible and sizeable endowment fund to prepare for the future. Grants from The Forever Frederick County Fund help address the most pressing needs now, and as they evolve and change over time.

The 2018 human needs assessment and the 2022 update are available on our website at [www.FrederickCountyGives.org/NeedsReport](http://www.FrederickCountyGives.org/NeedsReport).



SCAN THIS QR CODE  
to visit our website.

**QUESTIONS ABOUT THE REPORT** can be directed to Elizabeth Y. Day, President and CEO, at [president@FrederickCountyGives.org](mailto:president@FrederickCountyGives.org) or by phone at 301.695.7660.

312 East Church Street, Frederick, MD 21701 • [FrederickCountyGives.org](http://FrederickCountyGives.org)

