



ROOTED

IN TRUST

THE 39TH ANNUAL REPORT
TO THE COMMUNITY

JULY 2024-JUNE 2025



**The Community Foundation
OF FREDERICK COUNTY**



DEAR SUPPORTERS, PARTNERS, AND FRIENDS,

As we reflect on Fiscal Year 2025, one word rises to the surface again and again: trust.

At the Community Foundation, trust is more than a value—it’s the cornerstone of everything we do. We are deeply grateful for the many ways our community places its trust in us, and we take seriously the responsibility to honor that trust every day.

This past year was one of growth and building. Together, we awarded \$2.4 million in scholarships to help students achieve their dreams and \$6.9 million in grants to strengthen the nonprofits doing vital work across our region. These milestones are a direct result of our donors’ generosity and our shared belief that lasting change begins with strong relationships.

We are privileged to work alongside donors, nonprofits, volunteers, and community members who believe, as we do, that meaningful impact happens when we listen, collaborate, and stay rooted in shared purpose. Our grantmaking and scholarship processes are shaped by dedicated volunteers who bring insight, integrity, and a community-centered lens to every decision.

As you read this report, we hope you see not just numbers, but stories of trust in action—evidence of what’s possible when people come together to uplift one another. Thank you for being part of this journey. Your partnership makes this work possible.

With gratitude,

Detric L. Kemp, Esq.
IMMEDIATE PAST CHAIR, 2024–2025

Paul D. Rose, Jr., Esq.
CHAIR, 2025–2026

Elizabeth Y. Day
PRESIDENT AND CEO

TABLE OF CONTENTS

- 6** Grants
 - 10** Impact in Action: The Arc of Frederick County
 - 14** Impact in Action: The Delaplaine Arts Center
 - 16** Impact in Action: Heartly House
 - 20** Impact in Action: Frederick County Landmarks Foundation
 - 22** Impact in Action: February Star Sanctuary
- 24** Scholarships
- 26** Past Scholars
- 28** Cornerstone Society
- 31** Committee Rosters
- 32** Community Foundation Funds
- 68** Creating and Growing a Fund
- 72** Fund Performance
- 73** Financial Highlights
- 74** Fund Types



Learn more about this grant on page 13.

THE COMMUNITY FOUNDATION **STAFF**

Executive



Elizabeth Y. Day
President and CEO



Tonyia Miller
Executive Assistant



Mandy Strawn
Community Foundation Specialist

312 East Church Street
Frederick, Maryland 21701

Phone 301.695.7660

info@FrederickCountyGives.org

www.FrederickCountyGives.org

Accounting



Gail Fitzgerald, CPA, CGMA
Vice President of Accounting and Administration and Chief Financial Officer



Autumn Hall
Accounting and Technology Manager

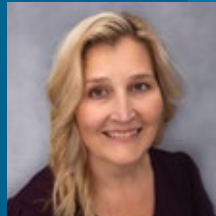


Tammy Long
Accounting Associate

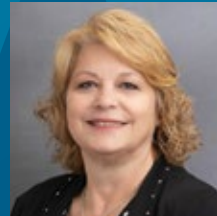
Philanthropic Services



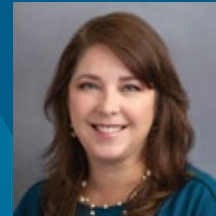
Betsy Diehl
Vice President of Philanthropic Services



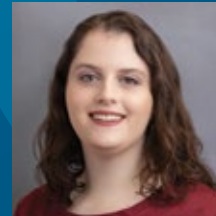
Becki DeLauter
Assistant Vice President of Philanthropic Services



Denise Getzandanner
Donor Relations and Stewardship Specialist



Brooke Kovalcik
Donor Relations and Stewardship Specialist



Rachel Griffin
Database Associate

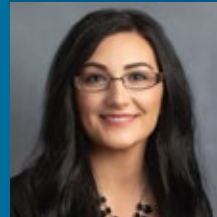
Community Impact



Lena Laug
Community Impact Manager



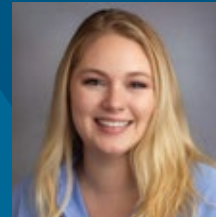
Zach Bolton
Community Impact Specialist



Erin Greenwald
Community Impact Specialist



Kym Byrnes
Vice President of Marketing and Communications



Brigid Ayer-Luttrell
Marketing and Communications Manager

MISSION STATEMENT

The Community Foundation is dedicated to connecting people who care with causes that matter to enrich the quality of life in Frederick County now and for future generations.

Marketing and Communications

2024-2025 BOARD OF TRUSTEES



◀ TRUSTEES EMERITI

Left to right **Charles V. Main, Donald C. Linton, CPA, and W. Jerome Offutt, Esq.** This honor was conferred upon these three men for their selfless dedication, extraordinary vision, and exemplary service to the Community Foundation.

Executive Committee



Detric L. Kemp, Esq.
Chair
Partner
Conklyn & Kemp



Paul D. Rose, Jr., Esq.
First Vice Chair
Attorney
McNees Wallace & Nurick, LLC



RaeAnn E. Butler
Second Vice Chair
President
Edenton Retirement Community



Veronica D. Lowe
Secretary
Retired Labor and Employee Relations Executive



Kimberly Smith Chaney, CPA
Treasurer
Retired
Kimberly S. Chaney, CPA, LLC



Beatrice (Anne) Reaver
Immediate Past Chair
Retired Human Resources Executive

Trustees



Ian P. Bartman, Esq.
Principal
Offit Kurman, P.A.



Alejandro A. Cañadas, Ph.D.
Associate Professor of Economics
Mount St. Mary's University



Brandon Cannon
President
Revo Development



Brandon Chapman
Co-owner
88Visual



Jennifer P. Clingan, CPA
Principal
LSWG CPAs



Joshua D. Donofry, CIMA®
Portfolio Manager
RS Will Wealth Management



Angela K. Dredden
Senior Manager Volunteers and Donor Relations
Hospice of Washington County



Carmen Hernandez, MD
Retired



Deepak Kini
Owner
Guild Support LLC



Patricia Maluchnik, CIC, CBIA
Account Executive
Alera Group



Linda S. Thane Morgan
President
Support Unlimited, Inc.



William Randall
President
Randall CAP



Abbie Ricketts
Community Volunteer



Ashleigh Rossi
Vice President
MacRo Commercial Real Estate



Justin Saltzman
Business Development/
Sales Associate
VCRE.CO



David Weigelt
Principal
C12 Maryland



Louanne Welgoss
Founding Partner
LTD Creative



Dr. Shawn Wolf
Co-founder and Principal
Outside Force Business Development Firm

See grant details on page 12.



GRANTS

DEEP ROOTS DRIVE IMPACT

Grants from The Community Foundation of Frederick County help power the work of nonprofits that are changing lives across our community.

Since 1986, we've awarded more than \$76 million to support everything from health care and food security to youth mentoring, animal wellbeing, career readiness, and cultural preservation.

Our trust runs deep—with the nonprofits we support and the donors who entrust us to build their legacies around giving. These grants do more than fund programs—they build connections, spark innovation, and reflect a shared commitment to creating a stronger, more vibrant Frederick County.

We're proud to stand alongside nonprofits as partners, not just funders—strengthening their capacity, amplifying their impact, and helping them grow in service to the community we all care about.

Learn more and apply for grants at FrederickCountyGives.org/Grants.



\$6.9M IN FY2025 GRANTS

CARING FOR PEOPLE \$3,727,618 (54%)

- Elder care services
- Health and Human services
- Strategic funding for preparing for an aging population
- Strategic funding for supporting families with children
- Strategic funding for responding to substance use disorder



COMMUNITY \$1,770,732 (26%)

- Civic and cultural organizations
- Faith-based organizations
- Community services/Emergency/Charities



CHILDREN, YOUTH, EDUCATION \$841,575 (12%)

- Educational programs
- Youth programs and projects



AGRICULTURE AND ANIMALS \$232,415 (3%)

- Agriculture education and support
- Animal well-being



THE ARTS \$217,164 (3%)



PRESERVATION: HISTORIC AND ENVIRONMENTAL \$121,037 (2%)

- Historic preservation initiatives
- Environmental support initiatives



UNDERSTANDING OUR GRANTS PROCESS

The Community Foundation offers two annual competitive grant cycles to support nonprofits making a meaningful impact in Frederick County.



STRATEGIC GRANTS fund outcome-driven projects aligned with our focus areas: supporting families with children, preparing for an aging population, and addressing substance use disorder.

IMPACT GRANTS support critical projects that improve life in Frederick County, regardless of focus area. These grants are awarded from funds where donors have entrusted the Community Foundation to assess applications and make the best decisions for the community's needs.

Additional grant support is provided through **donor advised funds**, **designated funds**, and other fund types that reflect the specific charitable wishes of individual donors. These grants are made throughout the year.

All grant applications are reviewed by a dedicated **Grants Committee**—a diverse group of volunteers who evaluate proposals for impact, alignment with donor intent, and community benefit. Final funding decisions are made by the Board of Trustees. Our grantmaking is powered by the generosity of donors and shaped by a community-centered process rooted in trust and volunteer leadership.



Gus came to the Animal Welfare League of Frederick County with limited mobility and some health issues. A grant from **The Richard W. Kanode Fund** helped Gus get the medical care he needed so that today he can provide comfort to others as part of the organization's hospice program.



Parent learners in the Literacy Council of Frederick County's program at Hillcrest Elementary were excited to receive free books and materials—made possible by a grant from **The Supporting Families with Children Strategic Initiatives Fund**. The Parent Literacy Program helps families build English skills in listening, speaking, reading, and writing.



A grant from **The Bar Association of Frederick County Justice for All Fund** supported The Asian American Center of Frederick's celebration for community members like Evangelina who recently became naturalized U.S. citizens.



A grant from **The AG-C.I.T.E. Fund (Agriculture Community Interactive Teaching Experience)** supported Hearts of the Herd's mission of providing intentional programming to help students build friendships, develop communication skills, and embrace hands-on learning through new challenges.



A grant from **The Charles E. Hartman Scholarship Fund** helped the Frederick County Career & Technology Center cover the cost of tools and certification exams for students working towards careers in carpentry and in welding and metal fabrication within the agricultural industry.



Sleep in Heavenly Peace Inc. received a grant from **The FCARe Fund** to help ensure local children have a place to sleep. With support from 50 volunteers, the organization built beds for children in need—offering comfort, security, and a good night's rest.

IMPACT IN ACTION:

THE ARC OF FREDERICK COUNTY



“We’re not a cookie-cutter program. We evolve to fill gaps and help where we’re needed most. Whether it’s children in the school system, adults looking for job training, or individuals simply needing guidance, we’re here.”

SHAUNA MULCAHY
EXECUTIVE DIRECTOR,
THE ARC OF
FREDERICK COUNTY



When Carol speaks about her life today, her words are filled with purpose, determination, and joy. She lives independently in her own apartment, proudly takes care of her cat, Angel, and spends her time volunteering, coaching, and advocating for others. But her journey to this place of confidence and independence wasn’t easy—and it might never have happened without The Arc of Frederick County.

“I was in an institution when I was younger. My parents didn’t want me, and they put me at Rosewood,” Carol said. “That’s a place to forget. No one should send their loved ones to Rosewood [Rosewood Center was an institution for individuals with developmental disabilities that closed in 2009].”

Eventually, Carol began receiving support from The Arc of Frederick County, and everything changed. She worked with a tutor named Brett who helped her learn to read, write, and spell. She completed a food service training program, secured a job at Wendy’s, and gained the life skills and support needed to live on her own.

Now, Carol is thriving—and giving back. She is a volunteer coach with Special Olympics and presents self-advocacy presentations across the state. And she has a powerful voice in her community as a member of The Arc’s Board of Directors.

She is a proud advocate and takes every opportunity to champion the efforts of The Arc and other resources for those in need. Every year, she travels to Annapolis to speak directly to legislators about protecting resources for people with developmental disabilities.

“I’m a people person, a collaborator,” Carol said. “I love the work I do. I’m taking control of my life and spreading it to others.”

That ripple effect—supporting one individual who then empowers others—is exactly what The Arc of Frederick County is rooted in. “We tailor our services to meet the



**MORE THAN
\$110,000**
IN DESIGNATED GRANTS
PROVIDED TO THE ARC

community’s ever-changing needs,” said Executive Director Shauna Mulcahy. “We’re not a cookie-cutter program. We evolve to fill gaps and help where we’re needed most. Whether it’s children in the school system, adults looking for job training, or individuals simply needing guidance, we’re here.”

The Arc serves more than 650 individuals through core programs, workshops, referrals, and family support and employs more than 300 staff members. The Arc is a cornerstone of care and inclusion in Frederick County, but like many nonprofits, the need for services is increasing and funding is unpredictable.

“There’s so much uncertainty around Medicaid and future funding,” Shauna said. “But what we can rely on is our community—and the Community Foundation is a big part of that.”

In fiscal year 2025, the Community Foundation provided more than \$110,000 in designated grants to The Arc.

Thanks to deep-rooted partnerships—from The Arc, from the Community Foundation, and from the Frederick community—Carol has found her voice. And she’s using it to help others find theirs.

Above: Carol poses for a photo in the lobby at The Arc, where she has received services and now serves as a member of the board of directors.

Left: Shauna Mulcahy, executive director of The Arc, works with client and board member, Carol.



A grant from **The Supporting Families with Children Strategic Initiatives Fund** helped close the weekend nutrition gap for many of the one in three children in Frederick who rely on their school's free and reduced-price meal program. Other funds that support Blessings in a Backpack include **The Charles A. Nicodemus Youth Fund, The Frederick Jaycees Fund, The Frederick Keys Care Fund, The George E. Jewell Family Fund, The Gordon M. and Teresa Warfield Cooley Charitable Gift Fund, The Mark and Susan Butt Saturday Mornings Fund, and The Will Group Fund**, among others.



A grant from **The Converse Family Endowment Fund** helped the Frederick County Humane Society provide spay and vaccine services to Tu Tu, giving her a fresh start.



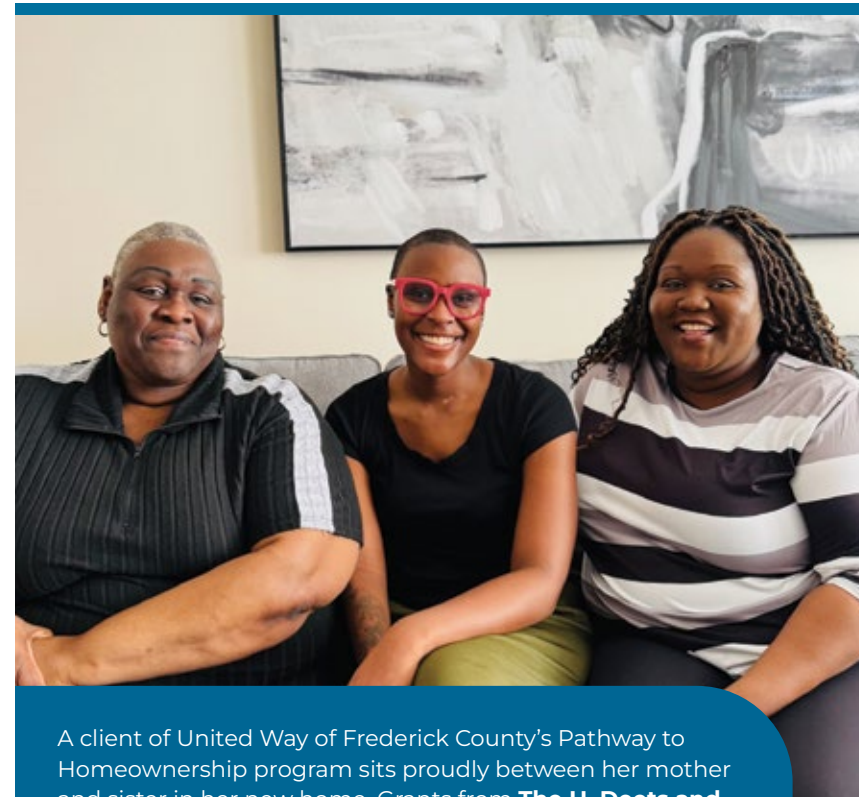
A grant from **The Walter W. and Catharine Prentiss Plummer Endowment Fund** supports Chesapeake Bay Foundation staff and volunteers in an Earth Day tree-planting event along Catoclin Creek in Frederick County.



Get Kids Outside received a grant from **The Frederick Keys Care Fund** to support a recent trip for 12 City Youth Matrix kids to Yellowstone National Park. Through outdoor education, the students built confidence, gained life experience, developed team-building skills and discovered that with hard work, there's nothing they can't do.



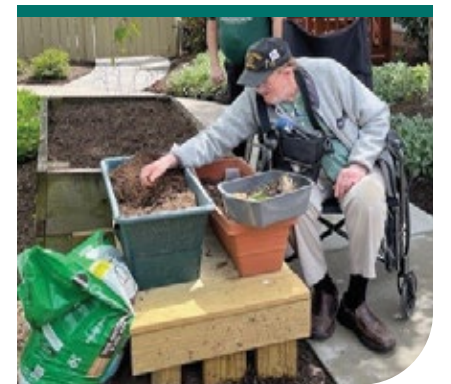
Hood College photography students venture outdoors to capture images for a class assignment, honing their technical skills and creative vision through hands-on exploration. Hood College received grants from **The Charles A. and Kathryn Z. Nicodemus Scholarship Fund, The Alden E. Fisher Fund, The McCardell Family Scholarship Fund, The Hood College Endowment Fund, The F. Lawrence and Shirley J. Silbernagel - Hood College Scholarship Fund, and The Alden and Harriet Fisher Scholarship Fund**. Photo courtesy of Hood College.



A client of United Way of Frederick County's Pathway to Homeownership program sits proudly between her mother and sister in her new home. Grants from **The H. Deets and Juanita Warfield Donor Advised Fund, The Kiwanis Club of Frederick Fund, and The Natelli Communities Charitable Fund** to the United Way of Frederick County helped the client secure a brighter future for herself and her son.



At YMCA Camp West Mar, kids explore the creek as part of a day filled with discovery and outdoor adventure. The YMCA received grants from **The Philip and Janis Miller Wertheimer Fund, The Charles V. and Louise D. Main Fund for Community Foundation, YMCA and Calvary United Methodist Church, The YMCA Restricted Endowment Fund, and The H. Deets and Juanita Warfield Donor Advised Fund**.



A grant from **The Preparing for an Aging Population Strategic Initiatives Fund** supports Daybreak Adult Day Services, Inc., enriching the lives of participants through meaningful and engaging activities. In the courtyard garden, Tom and Charlie tend to their vegetables—an activity that helps older adults stay active, reduce stress, and connect with nature.

IMPACT IN ACTION: THE DELAPLAINE ARTS CENTER

For almost four decades, The Delaplaine Arts Center has been a creative cornerstone in the heart of downtown Frederick. With galleries that showcase local, regional, and national artists, and classrooms filled with learners of all ages, the Delaplaine makes art accessible to everyone—no matter their age, experience, or background.

“The Delaplaine provides quality visual arts programming to the community. That includes more than 50 exhibitions, 250 classes and workshops, and dozens of programs each year,” Delaplaine CEO Duane Doxzen said. “Importantly, we reflect our vision that ‘everyone deserves art’ by doing our best to remove barriers for participation.”

From free exhibitions that invite thousands of visitors each year, to robust art education programs and community engagement initiatives, the Delaplaine helps weave the arts into Frederick’s everyday life. Their programs reach far beyond the walls of the historic building, extending into schools, senior centers, and community spaces, ensuring that creativity touches every corner of our community.

The Community Foundation has proudly partnered with the Delaplaine over many years, awarding grants that help fuel these programs and keep the arts flourishing. This long-standing relationship is built on mutual trust: we trust in the Delaplaine’s vision to inspire and connect people through art, and they trust in our shared commitment to make Frederick County a vibrant and culturally rich place to live, work, and play.

“The Community Foundation is a critical source of support for our ability to move our mission forward,” Duane said. “Certain programs exist only because the Community Foundation recognized their value. It not only provides opportunities for direct funding, but also is an important resource for connecting and encouraging the local nonprofit community generally. The expertise and guidance it provides can’t be underestimated.”

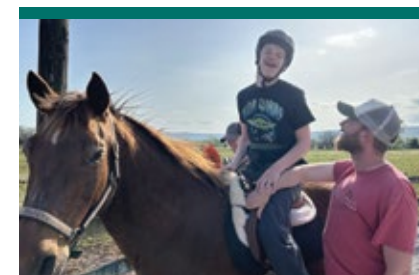
Together, we are ensuring that art—and the joy, reflection, and connection it brings—remains deeply rooted in Frederick County.

In FY25, the Community Foundation distributed grants from nine funds to The Delaplaine Arts Center totaling more than \$40,500.

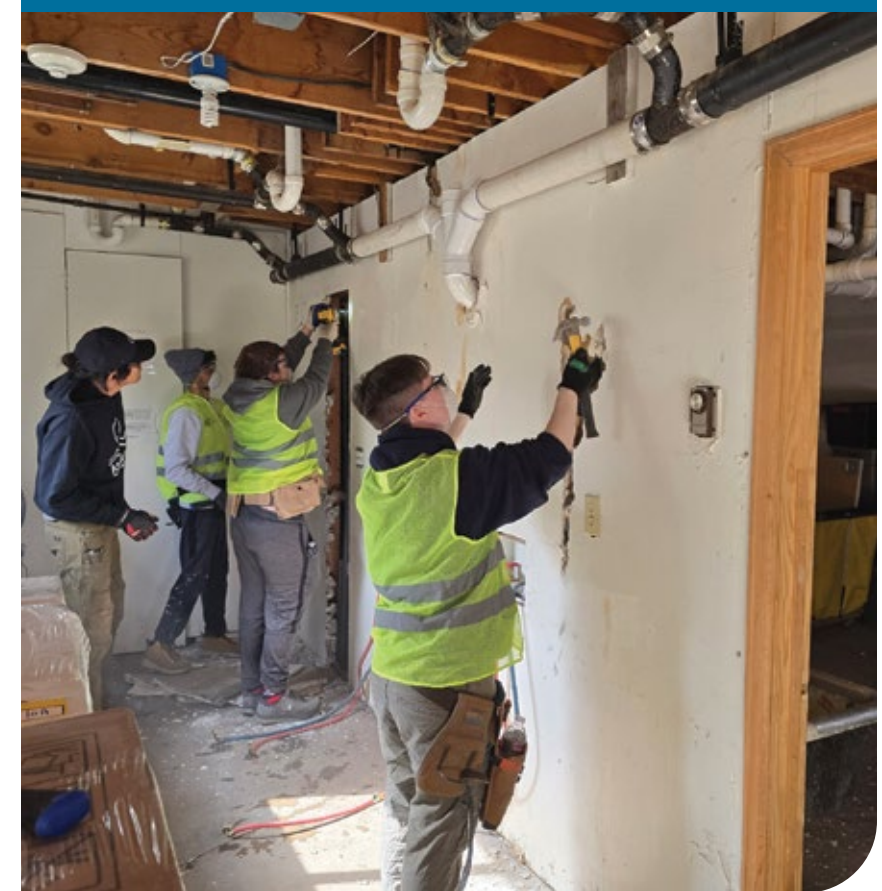
- The Mary Mason Hendrickson Memorial Fund
- The Bruce and Geraldine Wilson Charitable Fund
- The Memarsadeghi Family Fund
- The Sharon I. Hooper Fund for Children
- The Delaplaine Visual Arts Education Center Endowment Fund
- The Robert E. Randall Memorial Endowment Fund
- The Helen L. Smith Scholarship Fund for Children and the Arts
- The Colleen M. Remsberg Memorial Fund
- The Visual Arts Field of Interest Fund



Brenda, a certified nursing assistant at Frederick Health Hospice, cares for patients with respect, dignity and compassion. Grants from **The Vince and Guelda Imirie Fund, The Peter W. Beers Memorial Fund, The Carlton B. and Darlene Lin Oi Haakinson Fund, and The Frederick Health Hospice Fund** helps make this care possible.



Erik, a student with visual impairment, enjoys a riding lesson with a volunteer at Silverado Stables in Thurmont, where the Frederick County 4-H Therapeutic Riding Program is housed. Supported by grants from **The Frederick County 4-H Therapeutic Riding Program Fund, The C. Rodman and M. Jean Ogle Myers Fund, The Kiwanis Club of Frederick Fund and The Frederick Keys Care Fund**, the program aims to help students build confidence, strength and emotional well-being through therapeutic horseback riding.



High school students from the Maryland School for the Deaf gained hands-on training in skilled trades like construction and culinary arts at Aspen Camp for the Deaf and Hard of Hearing—an immersive program helping them prepare for the workforce. This opportunity was supported by a grant from **The Randall Charitable Trust Donor Advised Fund** to the Maryland School for the Deaf Foundation.



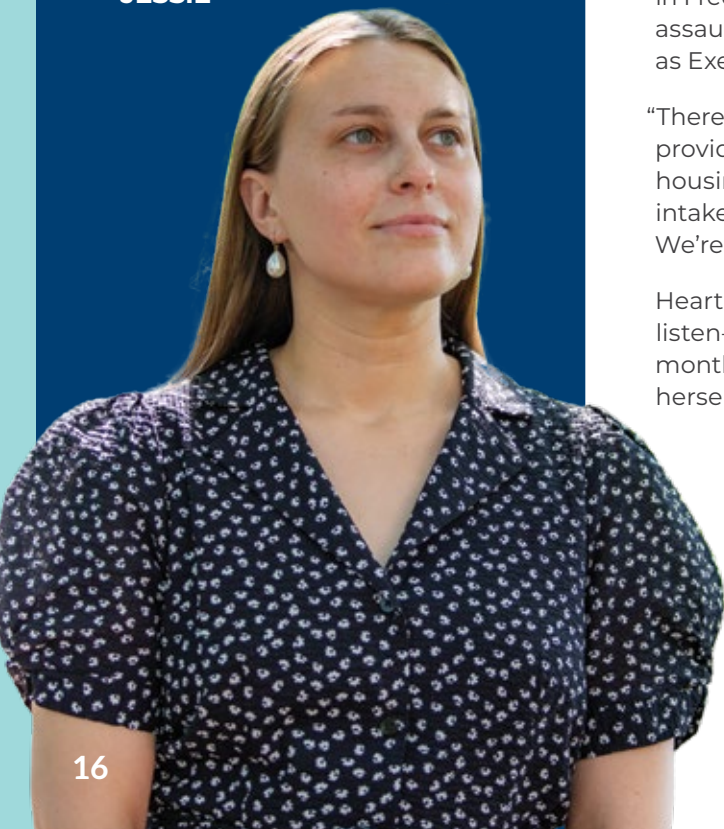
Students explore the sensory experience of painting at Story Tapestries. The program is supported by a grant from **The Persons with Disabilities Field of Interest Fund**.

IMPACT IN ACTION: HEARTLY HOUSE



“I was in a really dark place. I didn’t love myself. I didn’t feel like myself. But Heartly House helped me reconnect with who I really am. They didn’t just give me support—they gave me a community.”

JESSIE



Jessie didn’t set out to become a voice for survivors. But one courageous story—shared by someone she barely knew—changed everything.

“She was younger than me, braver than me,” Jessie said. “She spoke up about her experience with someone I had also been hurt by. It was terrifying, but it also lit a fire in me. I knew I had to act.”

That act began with a phone call. Jessie dialed the Heartly House hotline not knowing exactly what she needed—only that she was in need. That single moment of bravery led her to a place that offered more than just safety. It offered a path forward.

For nearly five decades, Heartly House has served as a vital resource in Frederick County for survivors of intimate partner violence, sexual assault, and child abuse. It’s often thought of as just a shelter—but as Executive Director Niki Thrash explains, it’s so much more.

“There is a lot of complexity in the work we do,” she said. “We provide legal support, therapy, prevention services, and safe housing for people of all genders and ages. Every time we do an intake, every time we listen—we may be preventing a tragedy. We’re not just reacting. We’re changing lives.”

Heartly House was a turning point for Jessie. The staff didn’t just listen—they saw her. They believed her. And in the weeks and months that followed, they helped her rediscover the parts of herself she thought she’d lost.

“I was in a really dark place,” Jessie said. “I didn’t love myself. I didn’t feel like myself. But Heartly House helped me reconnect with who I really am. They didn’t just give me support—they gave me a community.”

Today, Jessie is a working artist and an advocate, using her experience to educate others and let fellow survivors know they are not alone. As part of Heartly House’s



CLOSE TO
\$220,000
IN GRANT SUPPORT TO
HEARTLY HOUSE

Speakers Bureau, she shares her story with honesty, courage, and purpose. She’s proof that healing isn’t only possible—it’s powerful.

“Because of Heartly House, I’m still here,” Jessie said. “I’m thriving. I’ve found my voice, and I’m using it.”

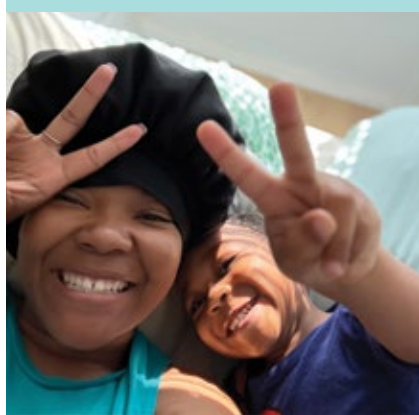
For years, the Community Foundation has helped ensure Heartly House has the flexible funding it needs to adapt, grow, and meet survivors where they are—no matter the uncertainty in federal or state funding. Through various charitable funds, **in fiscal year 2025 the Community Foundation provided close to \$220,000 in grant support to Heartly House.**

“When people know they have a safe place to go, it creates ripple effects,” said Niki. “Safer homes, stronger neighborhoods, healthier children. It’s not just about ending violence—it’s about building a better community.”

Jessie is living proof. Her story isn’t one of tragedy—it’s one of courage, connection, and hope. And thanks to Heartly House, she’s writing her own future. One of resilience, joy, and strength.

Above: Jessie discusses Heartly House’s work with Niki Thrash, the organization’s executive director.

Left: Jessie, who attributes her success today to Heartly House’s support, now serves on the organization’s Speakers Bureau.



Crystal and her son Marcell celebrate their new bed in one of Advocates for Homeless Families' transitional housing properties. A grant from **The David J. and Sara Levine Fund** helped make the transition from the shelter system to a home possible.



The Frederick Rescue Mission operates a summer camp for at-risk kids in Frederick, Thurmont and Walkersville, creating a safe and joyful space to learn, grow and just be kids. The program was supported by a grant from **The Mark and Susan Butt Saturday Mornings Fund**.



A courageous Logan, 10, has completed treatment and is in remission from an aggressive form of non-Hodgkin Lymphoma. He received assistance from the Little Oak Project, a branch of the Big Tree Memorial Fund, that supports children undergoing cancer treatment. A grant from **The William E. Barnhart Memorial Fund** supported Logan's journey.



Through Centro Hispano de Frederick's Éxito program, students conduct a hands-on science experiment. Supported by a grant from **The Supporting Families with Children Strategic Initiatives Fund**, these interactive lessons help students build critical thinking skills, deepen their understanding of science, and spark curiosity.



Phoenix Recovery Academy graduates celebrated a milestone shaped by courage, resilience and lifesaving personal growth. Their journeys were supported by grants to The Phoenix Foundation of Maryland from **The Mark S. Kavanaugh Endowed Scholarship Fund to Benefit Phoenix Recovery Academy, The Georgia Marie Abdow Fund, The Responding to Substance Use Disorder Strategic Initiatives Fund, and The Kiwanis Club of Frederick Fund**.



With support from **The Rosebud Frederick Senior Support Fund**, Aavanee board members and volunteers hosted a gathering for Frederick County seniors at the Urbana Senior Center. In collaboration with the Division of Aging and Independence, seniors enjoyed a STEM program, physical activity, a health talk and a nutritious lunch—all supporting mental well-being and fostering community connection.



A grant from **The Color on the Creek Fund** supported the Friends of Carroll Creek Urban Park, Inc.'s annual Sailing Through the Winter Solstice event featuring 26 illuminated boats on Carroll Creek.



A veteran mentor meets with an active-duty service member before a mentorship session at Platoon 22, a veteran-focused service organization committed to ending veteran suicide. This peer support program is supported by grants from **The Halleman Family Fund** and helps guide service members through their transition out of active duty.



IMPACT IN ACTION: FREDERICK COUNTY LANDMARKS FOUNDATION

In FY25 we distributed grants from five funds to Frederick County Landmarks Foundation totaling more than \$27,000.

- The Converse Family Endowment Fund
- The Friends of Schifferstadt Fund
- The Frederick County Landmarks Foundation Fund
- The Derr Fund
- The Beatty Cramer House Endowment Fund

Frederick County Landmarks Foundation is one of the county's quiet powerhouses—rooted in trust, fueled by volunteers, and dedicated to “saving our history for Frederick County’s future.” From the iconic Schifferstadt Architectural Museum to the Beatty-Cramer House and the restored 1802 Zion Church, the organization safeguards irreplaceable landmarks that tell our community’s story.

But preservation is more than keeping old buildings standing—it’s about keeping history alive for future generations. That’s where the Landmarks Foundation’s partnership with the Community Foundation makes a lasting difference. Through **The Converse Family Endowment Fund**, the Converse Grant Program helps homeowners in the historic district repair and restore their properties while honoring original craftsmanship and materials.

Over a number of years, Erik Anderson, a first-time homeowner in downtown Frederick, received several Converse Grants that helped to restore historic windows, doors, and masonry. “Without the Landmarks Grant, the structure would not have been repaired in a timely way, risking further damage,” Anderson says.

Every plaque awarded to a century-old property, every festival celebrating heritage, every preserved structure is a reminder that the Landmarks Foundation’s work strengthens community identity and pride. “We are grateful to the Converse Family for seeing the need to provide preservation assistance and also to our hundreds of volunteers and donors over our 50-year history,” says Jennie Russell, Frederick County Landmarks Foundation Board President.

With deep roots in trust and a strong partnership with the Community Foundation, Frederick County Landmarks Foundation is ensuring the past has a vibrant place in our future.



At Centro Hispano de Frederick, participants in Entre Mujeres explore cultural diversity through Afro Dance Fusion while also enjoying the benefits of physical activity for better health. The program is supported by a grant from **The Juana Delgado Rivas Fund for Centro Hispano de Frederick, Inc.**, helping to build community, connection and well-being.



The League of People with Disabilities' Camp Greentop in the Catoctin Mountains provides a welcoming, judgment-free environment that is physically, socially and intellectually enriching for individuals of all abilities. A grant from **The Emmons Family Charitable Fund** supported camp programs.



With the help of dedicated volunteers, the Frederick Rescue Mission served nearly 100,000 hot meals to individuals in need last year with support from **The Kirkpatrick/LeGore Family Fund** and **The David and Kay Stauffer Family Fund**. Other funds that support the Frederick Rescue Mission include **The Robert and Lorraine Stup Fund, The Rosensteel Family Fund, The Elmira B. Cook Endowment Fund for the Frederick Rescue Mission, The Donald Lewis Community Impact Fund for Frederick Rescue Mission, Inc., The Dan and Jackie Ward Family Fund, The Kiwanis Club of Frederick Fund, and The Robert P. Lapointe Memorial Fund**, among others.



Frederick Health Hospice's Camp Jamie offers support and healing for grieving children in grades 1 through 8. Grants from **The Kiwanis Club of Frederick Fund** and **The John L. and Lucille H. Ponton Charitable Fund** support this meaningful experience that provides companionship, encouragement and one-on-one attention to each camper. Detric Kemp, chair of the Community Foundation board of trustees, is pictured with his camping buddy.

IMPACT IN ACTION: FEBRUARY STAR SANCTUARY



Tucked away on a quiet stretch of land in Frederick County, February Star Sanctuary is more than a refuge for rescued horses and cats—it’s a place where healing, growth, and connection take root every day. Phyllis and Dave Smith purchased the farm nearly two decades ago, and it has steadily blossomed into a sanctuary not only for animals in need, but for the people who come to care for them.

“We give a home to cats and horses that need a place,” said Phyllis Smith, co-founder and executive director. “We aim to give them a soft landing as they find a new home. Every year we grow a little more.”

Today, February Star is home to around 22 horses and 120 cats, all supported by a deeply committed group of volunteers. Some, like Kevin Alder and his wife Jess, sponsor specific horses, spending time riding, grooming, and caring for them. Others show up week after week, cleaning stalls, filling feed buckets, and giving the animals the care and love they deserve.

But February Star doesn’t just rescue animals—it creates space for people to grow too.

Through youth camps and hands-on educational programs, the Sanctuary offers children and teens a unique opportunity to connect with nature, build confidence, and develop a sense of responsibility. For families like Pauline Strano Dahlin and her daughter Angelina, that connection has been life-changing.

“The first time she came to camp, Angelina was shy and quiet,” Pauline recalled. “She barely talked to anyone. But working with the animals and the camp leaders gave her a sense of purpose. She learned how to work with others. She learned how to lead.”

It’s these moments—small but profound—that define the mission of February Star. While the animals receive critical care and a second chance, the people who work alongside them find community, healing, and strength. It’s a symbiotic relationship rooted in trust: the animals trust the people to care for them, and the people grow by rising to that responsibility.



NEARLY
\$15,000
IN IMPACT GRANTS
AWARDED TO
FEBRUARY STAR

To support this work, The Community Foundation of Frederick County awarded February Star five impact grants in fiscal year 2025, totaling nearly \$15,000. These grants have helped with everything from pasture management and veterinary care to equipment, dental work, and even chiropractic services for the horses. Some grants are earmarked specifically to expand youth programs—ensuring more children like Angelina have the opportunity to thrive.

“That financial support is a big deal to us,” said Phyllis. “It allows us to care for our animals in a deeper way and support more youth in our programs. Our horses need interaction to stay healthy and adoptable, and these programs provide that essential engagement. It’s all connected.”

As the Sanctuary looks to the future, the connection will only deepen. Phyllis’s daughter, Addy, is heading to the University of Kentucky to study equine science and nonprofit management—with plans to one day take the reins of the family mission.

Together, the family dreams of building an indoor facility so that programs can continue year-round, rain or shine. It’s a vision grounded in love, service, and a commitment to growing what they’ve already built—slowly, steadily, and always with trust at the center.

Through the continued support of The Community Foundation of Frederick County, February Star Sanctuary will keep offering a safe haven for horses, cats, and the many people who find themselves transformed by the simple, powerful act of caring for another living being.

Above: (Pictured L-R) Alexis Watkins, Alexandra Watkins, Phyllis Smith, Addy Smith, Kevin Alder, Angelina Dahlin and Pauline Strano Dahlin pose for a photo at February Star Sanctuary.

Left: Angelina Dahlin rides a horse at February Star Sanctuary.



SCHOLARSHIPS

OPENING DOORS TO EDUCATION

Rooted in trust and powered by generosity, the Community Foundation is proud to be Frederick County's largest provider of post-secondary scholarships.

For nearly 40 years, our donors have trusted us to help students take the next step toward their educational and career goals. In the past year alone, we awarded **over \$2.4 million to more than 400 students** pursuing college degrees, technical training, and trade certifications in Frederick County and beyond.

We recognize that every path is different. That's why our support includes not just academic scholarships, but also funding for trade schools, certification exams, tools, and other essentials that help students thrive in the workforce.

With more than **270 scholarship funds** supporting post-secondary education, **one simple application**—open each spring—**connects students to every opportunity they qualify for**. For those pursuing careers in the trades, a separate application is available throughout much of the school year to provide financial support for tools, supplies, certification exams, and other training costs. All applications are carefully reviewed by our volunteer committee members, who ensure each award honors donor intent and creates lasting community impact.

Learn more at [ScholarshipsFrederickCounty.com](https://www.scholarshipsfrederickcounty.com).



See Scholar Story on page 27.

\$2.4M
IN SCHOLARSHIPS
DURING FY25

554
scholarships
presented

MORE THAN
\$62K
awarded in career
education scholarships

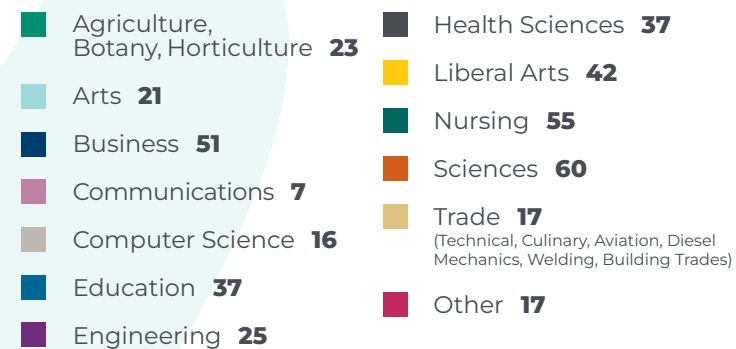
187
scholarships awarded
to students already
enrolled in college

221
scholarships awarded
to graduating high
school seniors

419
students received scholarships



SCHOLARSHIP RECIPIENTS' MAJOR AREAS OF STUDY





LUKE STALEY

Luke Staley, a 2016 graduate of Linganore High School, earned a degree in political science from Hood College in 2021. He credits **The W. Meredith S. Young and Helen B. Young Scholarship Fund** for making his college journey possible.

“It is no exaggeration to say the scholarships I received from the Community Foundation made my post-secondary education goals possible,” Luke said.

Following graduation, Luke stepped directly into the nonprofit world—a path he hadn’t originally envisioned. He began working full-time with the Fellowship of Christian Athletes (FCA), where he now serves as the Area Representative for Central Frederick.

“This was not at all what I thought I’d be doing, but God had different plans than mine—and I’m so glad He did,” Luke said. “My entire job is dedicated to serving people in our community, and there’s nothing else I’d rather be doing.”

During the school year, Luke works closely with student-athletes and coaches at Frederick and Governor Thomas Johnson high schools, as well as at Hood College, helping them connect sports with faith through FCA clubs. In the summer, he shifts his focus to sports ministry camps, including the FCA American Sign Language Sports Camp for deaf athletes and the Frederick FCA Power Camp, which draws more than 300 middle schoolers each year.

Luke plans to continue serving the Frederick City community through FCA for the foreseeable future.

“I love this community, and I feel truly called to this work,” he said.



DR. MELANIE MARTIN

For veterinarian Melanie Martin, caring for animals has always been more than a passion—it’s a calling. Now, thanks in part to scholarships from The Community Foundation of Frederick County, she’s officially launched her career in veterinary medicine.

A 2018 Winters Mill High School graduate, Melanie began her academic journey at Carroll Community College before transferring to McDaniel College, where she earned her bachelor’s degree in 2021. After years of hard work and hands-on experience, she graduated from Midwestern University College of Veterinary Medicine in June 2025.

This summer, she began her first position at Veterinary Emergency Group in Baltimore County. She’s entering an intensive six-month training program that covers emergency triage, surgery, outpatient procedures, and critical care.

“I’m so excited for this new adventure—learning every day and finding new ways to help people and pets in our community,” Melanie said.

Throughout veterinary school, Melanie worked at both general practice and emergency animal hospitals as a veterinary technician, assistant, and scribe. Her experiences ranged from routine exams to complex emergency procedures, helping build the clinical and communication skills she’ll now use as a full-time emergency veterinarian.

Melanie received more than \$40,000 over four years from **The Harold Glen and Audrey G. Benson Trumpower Foundation Scholarship Fund**. She said the financial assistance made a lasting difference in her journey.

“The biggest thing those scholarships did was give me a little more flexibility to focus on my schooling,” she said. “I still worked 30 hours a week, but the extra support gave me time to volunteer in Arizona—helping with TNR [trap-neuter-return] programs and spay/neuter services in Native American communities,” Melanie said.



MELISSA AELLEN

For Melissa Aellen, winemaking is more than a career—it’s a family legacy.

A 2009 graduate of Urbana High School and third-generation winemaker, Melissa knew early on that her future lay in viticulture. But pursuing a specialized degree in Viticulture and Enology meant her college choices were limited, as only seven colleges in North America offered her major. She was able to attend the closest to home, Cornell University, with support from a scholarship from **The Robert and Ann Miller Family Fund**.

“It was an absolute honor to be awarded a scholarship,” Melissa shared.

After gaining experience in Indiana, New Zealand, and Oregon, Melissa returned home to Frederick in 2017 to continue the family tradition at Linganore Winecellars, where she now serves as Director of Winery Operations. Her impact hasn’t stopped there—last winter, she and her family launched Simple Theory Wine Co. in downtown Frederick, further expanding their roots in the community.

Now serving as President of the Maryland Wineries Association (MWA), Melissa is helping shape the future of Maryland wine.

“With the new business and leadership position with MWA, I’m excited to help push Maryland wine forward through education, community engagement, and visitor experiences. It’s a new generation of Maryland wine, and I’m thrilled to be at the forefront,” Melissa said.



NHU DOWLING

Some people find their passion early. Nhu Nguyen Dowling started working as a fashion photographer at 14 years old, which helped her find her passion for visual storytelling.

Scholarship support from **The Audrey Pressler Bauman Scholarship Fund** and **The Nicholas Talarico Paskowsky Memorial Fund** helped Nhu become the creative leader she is today.

A 2011 graduate of Frederick High School, Nhu graduated from Stevenson University in 2015 with a Bachelor of Science degree in Visual Communication Design and Marketing. Since then, she’s built a career at the intersection of design and social impact, working with advocacy organizations, national nonprofits, and cultural campaigns.

“Those scholarships in 2011 were a vote of confidence at a time when I was still finding my voice and path as a young immigrant artist navigating unfamiliar systems,” Nhu said.

Nhu currently works as a Vice President, Creative Director at Fenton Communications.

Nhu says that receiving scholarships has had a profound impact on her, not only easing the financial burden of continuing her education but providing her with something more.

In addition to her work with Fenton, Nhu runs her own creative studio and shop Brand—Nhu Creative—which explores her passion for identity-driven projects that celebrate community, culture, and intersectional experiences.



Cornerstone Society member Ric Adams sits next to Cornerstone Society member Linda S. Stone during a program at the luncheon in May.

CORNERSTONE SOCIETY LEGACY TAKES ROOT



Cornerstone Society member Alexa W. Bedwell, left, poses for a photo with Community Foundation trustee Linda S. Thane Morgan at the Cornerstone Society Luncheon in May.

The Cornerstone Society honors those who have thoughtfully planned a gift to the Community Foundation in their estate, creating a lasting legacy of generosity. These visionary individuals trust us to carry out their philanthropic vision and ensure that the causes they care about continue to thrive for generations to come.

Their commitment is the foundation upon which future impact is built—rooted in trust, guided by purpose, and dedicated to a stronger, more vibrant Frederick County.

We are deeply grateful for their foresight, their passion, and the enduring difference they are making. To learn how you can join this extraordinary group, email Giving@FrederickCountyGives.org to connect with our Philanthropic Services team.

- A Friend of the Community Foundation
- Friends of the Community Foundation
- Anonymous Donor #8
- Anonymous Donor #11
- Anonymous Donor #13
- Anonymous Donor #14
- Anonymous Donor #16
- Anonymous Donor #18
- Anonymous Donor #19
- Anonymous Donor #21
- Anonymous Donor #22
- Anonymous Friend
- Anonymous
- Ann and Ric Adams
- Ron and Bonnie Albaugh
- Ms. Anne B. Allen
- Arthur O. and Julane P. Anderson
- Ms. Cleopatra Campbell Anderson*
- Ms. Dorinne S. Armstrong
- Mr. Eric S. Arnold
- Mr. Nevin S. Baker*
- Ms. Wanda Lou Baldwin*
- William* and Hettie Ballweber
- Mr. William Eugene "Gene" Barnhart*
- Mr. George J. Barthel*
- Lawrence T. Bassett* and Terrence E. Ruppert
- Audrey and Steve Bauman*
- Ms. Alexa W. Bedwell
- Joseph I. Berman, MD*
- Mr. and Mrs. Glenn E. Biehl*
- Charles A. and Shirley R. Bisselle*
- Mr. L. Edward Blumenauer*
- Ms. Nancy A. Bodmer

- Ms. Joyce M. Bovello
- Mrs. Elizabeth J. Brady
- Ms. Margaret Brandenburg*
- Mr. and Mrs. Albert E. Brault*
- Mrs. Barbara Brewster
- Secretary David Brinkley
- Dr. Robert E.* and Linda S. Broadrup
- Ms. Alice M. Brouillet*
- Mr. William H. Browning, Jr.*
- Charles and Linda Bruchey
- J. Milton and Elsie Brunk*
- Jack* and Jeannie Brunk
- Col. Sandra L. Brunken
- Ms. N. Dola Burkentine
- Mr. Matthew Burkhardt
- Ms. Frances W. Burlas*
- Mr. Joseph D. Byrd*

- Ms. Julie R. Calhoun*
- Mr. Marion D. Carmack, Jr.*
- Emily and John Carnochan*
- Jim and Letty Carpenter
- John* and Millie Cartee
- Mr. and Mrs. Howard M. Cartwright
- Mr. Steve Cassis
- Robert F. and Elizabeth E. Cavanaugh*
- Mr. and Mrs. John Cheatham*
- Mr. and Mrs. Dwight Collmus*
- Mr. A. Bryant Converse*
- Mrs. Ruth Converse*
- Mrs. Connie Cox Cook*
- Ms. Elmira B. Cook*
- Mrs. Mattie H. Cornpropst*
- Ms. Janet L. Coblentz Cover*
- Mr. and Mrs. Kirk D. Cramer, Jr.*
- Mrs. Shirley Crampton*
- Ms. Sandra Summers Crist*
- Mr. William E. Cross*
- Denny and Judy Crum
- John and Lib Crum*
- Mr. Michael Cumberland
- Ms. Katharine E. Cutshall*
- Ms. Virginia T. Dashiell*
- Daniel Davis, MD and Rev. Suzanne Adele Schmidt, Ph.D.
- Ms. Janet E. Davis
- Michael G. and Elizabeth Y. Day
- Ms. Elizabeth Derr*
- Dr.* and Mrs. Herbert L. Doggett
- Ms. Dee Dolan
- Ms. Julie A. Donat
- Mr. Lawrence A. Dorsey, Jr.*
- Don Doughty* and Linda Moran
- Mrs. Dale Woolston Dowling
- Ms. Peggy Dufour
- Cathie and Will Duncan
- Mrs. Thelma B. Duvall*
- Ms. Kendra Dwyer
- Steve and Nancy Ebner
- Mr. and Mrs. Bertram L. Edmonston, III
- Mr. Erwin Eisenhower*
- Mr. and Mrs. Joseph E. Elkins, Jr.*
- Mr. and Mrs. Harold E. Emmons*
- Mr. Jacob E. Engelbrecht*
- Mrs. Helen E. Erwin*
- Mrs. Marybell Castle Everhart*
- Ms. Dorothy H. Ewing*
- C. William and Christine Eyler
- John and Annabelle Eyler*
- Mr. Donald Falconer*
- Kenny and Denise Favorite
- Ms. Susan K. Favorite
- Mrs. Karen Fetterly*
- Mr. Mike Fields
- Jay and Virginia Fifer*
- Mr. Jim Filby*
- Melvin E. and Esther E. Filler*

- Alden E. and Harriet K. Fisher*
- Ms. Anne S. Fisher*
- Mrs. Pauline Draper Fisher*
- Paul and Gail Fitzgerald
- Mr. David A. Fogle*
- Miss Rhema Fogle*
- Doug and Lisa Frushour
- James and Sandra Gangawere
- Mr. Gene G. Gardner*
- Miss Helen M. Gardner*
- Mr. Harry George
- Dr. John C. George
- Ms. Eleonore A. Gerstenfeld*
- Ms. L. C. Gilbert*
- Ms. Peggy L. Githerman*
- Bess and Frank Gladhill*
- Ms. T. Sue Gladhill
- Mr. Richard M. Golling, Jr.
- Mrs. Chase C. Gove*
- Ms. Dorothy M. Green
- Mr. James M. Green*
- Mr. and Mrs. Mark W. Grimes*
- Ms. Anne-Lynn Gross*
- Mr. Bernard Grove*
- Mr. Daniel C. Guyton
- Mrs. Louise T. Guyton*
- Merle L. and R. Rebecca Guyton
- Carlton B. and Darlene Lin Oi Haakinson*
- Rev.* and Mrs. Theodore Haas
- Ms. Elizabeth K. Hale*
- Ms. Gloria F. Hartman*
- André C. and Regina W. Hayes
- Molly and Robert Hayes
- Ms. Susan G. Hayes
- Ms. C. Sue Hecht
- Mrs. Carole Heine
- Hunt and Joan Hendrickson
- Mr. and Mrs. John D. Hendrickson, II
- Kerri Hesley, MD and Timothy Gibian, PsyD
- Ms. Thelma T. Higuchi*
- Fred K. Hines, Ph.D.*

- Mrs. Irene Hogan*
- Charles and Teresa Hoke*
- Mr. Amos Holter, Sr.*
- Mrs. Betty Markey Hooper*
- Mr. Robert G. Hooper
- U. Mehrl and Margaret T. Hooper*
- Ms. Jeane Hostetler
- Robert and Virginia Houck
- Mr. Forest Hough*
- Mr. Carroll D. House*
- Ms. Phyllis Hoyer
- Mr. J. Richard Hudson, Sr.*
- Mrs. Annette James
- John Jones and Mary Jane McWilliams
- Ron and Jill Jones
- Ms. Stella Fields Jordan
- Ms. Jean Joyce
- Mrs. Mary Michael Crewe Judge*
- Ms. Karen S. Justice
- Robert E. and Maureen M. Kallstrom*
- Mr. Richard W. Kanode*
- Mr. and Mrs. Eugene A. Kefauver*
- Mr. Charles E. Keller, III*
- Mr. Guy Kelly*
- Ms. Eleanor W. Kerr
- Ms. Carolyn Lee King*
- Charles* and Janet King
- Ms. Gail H. Kohls
- Dr. Nelita T. Laires*
- Mr. Daniel J. Lajewski, Jr.
- Rev. Albert K. Lane, III and Dayna L. Lane
- Ms. Harriet Langlois
- Mr. Edgar "Bud" Larson*
- Marvin and Bonnie Laws*
- Mr. Harry J. Lebherz, II*
- Mr. Richard Lebherz*
- Mr. Chester M. Leishear*
- Mr. Jack Leishear
- Mr. Donald L. Lewis*
- Mr. Greg Light
- Mr. Donald C. Linton
- Mrs. M. Rebecca Linton
- Ms. Elizabeth "B.A." List
- Mrs. Ann Burnside Love
- Mr. Barry O. Lucey
- Mr. Tom Lynch and Ms. Karlys Kline
- Mrs. Eleanor F. Mackintosh*
- Mrs. Helen I. Mahylis
- Charles T. and Mary Ellen Main*
- Mr. and Mrs. Charles V. Main*
- Mr. James W. Main*
- Ms. Barbara D. Marmet*
- Family and Friends of Frank Martz
- Mrs. Sandy Mastrino*
- Mark A. and Angela L. Mayer
- John and Laura McCullough
- Dr. Ron McCurdy and Ms. Kimberly Chaney



Cornerstone Society members Dr. Daniel Davis and Rev. Suzanne Adele Schmidt pose for a photo with Community Foundation trustee Angela K. Dredde at the Cornerstone Society luncheon in May.



Cornerstone Society member Molly Hayes enjoys the program at the Cornerstone Society luncheon in May.

Mr. Richard T. Meagher
 Mrs. Marty Mercer-Akre
 Charles C. and Carol T. Mertz*
 Mrs. Janet L. Hahn Michael
 Mr. Frederick M. Michel*
 Ms. Theresa Mathias Michel*
 Ms. Theresa "Tee" Michel
 Ms. Cynthia Miller
 Mr. David Miller
 Ms. Hollace Poole Moore
 Ms. Charlotte Moran*
 Katherine and Daniel Morris, III
 Ms. Robin Marie Morris
 Mrs. Linda C. Moser*
 Robert and Winifred Mount*
 Dr. and Mrs. John Munson*
 Mr. Calvin Murray*
 Ms. Mary Louise Musser
 Mr. C. Rodman Myers
 Ms. Margaret E. Myers*
 Mrs. Rose Marie Myers
 Wayne C. and Margaret S. Neely*
 Mr.* and Mrs. Charles A. Nicodemus
 Mr. Roger F. Nicodemus*
 Ms. Addie B. Null
 Mr. and Mrs. Donald F. O'Brien*
 Mr. Linwood T. Offutt, Jr.*
 Mr. and Mrs. Linwood T. Offutt, Sr.*
 Mrs. Nellie Page*
 Mr. and Mrs. Robert L. Palla, Jr.
 Mrs. Susan Palmer-Purtee
 Ms. Jennie Sue Pearson*
 Michael and Charlene* Perry
 Mrs. Elizabeth L. Peters*
 Richard and Patricia Petre*
 Mr. H. Daniel Pfeiffer, Jr.*
 Col. and Mrs. Walter W. Plummer*
 Ms. Lucille H. Ponton*
 Mrs. Betty Agatha Powell*
 Jerry and Molly Pritchett
 Mrs. Marguerite Quinn*

Mehrle H. and Thelma Ramsburg*
 Mrs. Frances A. Randall*
 Nancy Deyle Randall and Myron W. Randall, Jr.
 Dr. P. Gregory Rausch
 Ms. Audrey E. Rayfield
 Robert J. and Kathryn "Kitty" Reed*
 Clarence* and Jeanie Keller Reeder
 Richard and Betsy Reinders
 Mrs. Colleen Remsberg*
 Mrs. Ramona Remsberg*
 Ms. Martha L. Reynolds*
 Mr. Millard Rice*
 Mrs. Libby F. Richards*
 Don and Rosa Rippeon
 Ms. Ellen B. Ristorcelli
 Gwen Romack and Evan Somerstein
 Norman and Melissa "Missy"* Ross
 Ms. Linda Roth
 Ms. Henrietta Rothwell*
 Mrs. Rita Rourke*
 Ms. Judy Russell
 Mrs. Gloria J. Ryals
 Tod and Barry Salisbury
 Mr. Calvin E. Saylor*
 Ms. Susan A. Scarvalone
 James and Carmen Schmersahl
 Ms. Leah Catherine Schroyer*
 Mr. Conrad Drew Shafer*
 Wayne and Diane Shaff
 Bob and Carol Sharpe
 Mrs. Alma Sharrer*
 General Clair Wayne Shisler*
 Mrs. Shirley A. Shores
 Mrs. Marcy Shtatman
 Mr. and Mrs. F. Lawrence Silbernagel, Jr.*
 Mrs. Mary Ann Simmons*
 Ms. Margaretta F. Slayman*
 John J.* and Gail K. Slezak
 Fred and Emily Sloviko
 Dr. and Mrs. George I. Smith
 Miss Mary E. M. Smith*
 Miss Ruth E. Smith*
 Mrs. Virginia Belle Smith*
 David and Mary Snyder
 Ms. Karen L. Southall
 Dr. Sonja Sperlich*
 Ms. Lois Noffsinger Spurrier*
 Mrs. Margaret S. Stauffer*
 Miss Alice Jean Stine
 Ms. Kathleen Baker Stine*
 Mr. and Mrs. Richard H. Stine*
 Mr. Norman Stitley*
 Ms. Audrey H. Stone
 Ms. Linda S. Stone
 Mr. Frank G. Stoner*
 Mr. H. Peter Storm
 Mr. Charles C.T. Stull*
 Mrs. Mary M. Stull*

Ms. Mary Alice Stup*
 Robert and Lorraine Stup*
 Mr. John P. Stush
 Mr. Austin Summers*
 Rob and Joyce Summers
 Mrs. Bonnie Swanson
 Jane Talarico and Michael Paskowsky
 James and Theresa Tarleton
 Dr. Thomas Tarpley
 Bob and Millie Taylor*
 Ms. Martha M. Thomas
 Harry and Leona Trout*
 Mr.* and Mrs. Charles F. Trunk, III
 Mr. Chris R. Tyree and Dr. I. Blanche Bourne-Tyree*
 Mr. Edgar C. Virts, Jr.*
 Kevin and Sara Wade*
 Ms. Nora Joy Wade
 Linda S. Walsh and William T. Dunkin*
 Mr.* and Mrs. Norman E. Waltz, Sr.
 Mr. and Mrs. H. Deets Warfield, Jr.
 Ms. Lynne M. Warner*
 Dr. Ashley Waters
 Mrs. Peggy Waxter
 The Honorable and Mrs. William W. Wenner*
 Ms. Barbara L. Wenschhof
 Mrs. Janis Miller Wertheimer*
 Ms. Katherine M. White
 Mr. De Walt J. Willard*
 Ms. Mary C. Willard*
 Mr. Bruce D. Wilson
 Jeff and Marguerite Wilson
 Ms. Nancy M. Wilson
 Ms. Arie L. Winebrener*
 Mr. Harold B. Wright*
 W. Meredith S. and Helen B. Young*
 Nelson and Celia Zahler
 Ms. Elizabeth "Beth" Zang
 Clayton and Phebe Zimmerman*

*Remembered Forever
 Cornerstone Society Membership List as of 6.30.2025



Cornerstone Society members C. Sue Hecht and Norine H. Haas pose for a photo with Community Foundation trustee Justin Saltzman at the Cornerstone Society luncheon in May.

COMMITTEE ROSTERS 2024-2025

We are grateful for our volunteers, whose commitment of time and energy not only strengthens our organization but also ensures that we have diverse voices at the table and maintain transparency in all that we do.

EXECUTIVE COMMITTEE

Detric L. Kemp, Esq., Chair
 Paul D. Rose, Jr., Esq., First Vice Chair
 RaeAnn E. Butler, Second Vice Chair
 Veronica D. Lowe, Secretary
 Kimberly Smith Chaney, CPA, Treasurer
 Beatrice (Anne) Reaver, Immediate Past Chair

AUDIT AND RISK COMMITTEE

Jennifer P. Clingan, CPA, Chair
 Patti Maluchnik, CIC, CBIA

COMMUNITY LEADERSHIP COMMITTEE

Carmen Hernandez, MD, Chair
 RaeAnn E. Butler
 Jeffrey Poirier
 Beatrice (Anne) Reaver
 Abbie Ricketts

GRANTS COMMITTEE - SUBCOMMITTEE

Abbie Ricketts, Chair
 Mishaelia Bushman
 RaeAnn E. Butler
 Dr. Mark Butt
 Kara Fritz
 Carmen Hernandez, MD
 Sandra Hoefmeister
 Jenny Huseman
 Detric L. Kemp, Esq.
 Veronica D. Lowe
 Julie Martorana
 Tim Pierce, CPA, CITP, CGMA
 Jeff Poirier, Ph.D.
 William Randall
 Beatrice (Anne) Reaver
 Lynne Robinson
 Serina Roy
 Louanne Welgoss
 Patty Yeager

ENGAGEMENT COMMITTEE

Linda S. Thane Morgan, Chair
 Mary Barry
 Angela K. Dredden
 Jan Gardner
 Ashley Goldsborough
 Justin Saltzman
 PW Shaffer
 Jeff Waltz
 David Weigelt

GOVERNANCE COMMITTEE

Carmen Hernandez, MD, Chair
 Jennifer P. Clingan, CPA
 Joshua D. Donofry, CIMA@
 Patti Maluchnik, CIC, CBIA
 Beatrice (Anne) Reaver
 Dr. Shawn Wolf

HUMAN RESOURCES COMMITTEE

Paul D. Rose, Jr., Esq., Chair
 Lisa Y. Coblentz
 Mike Cumberland
 Veronica D. Lowe
 Ted Luck
 Beatrice (Anne) Reaver
 James D. Summers, CPA
 Dr. Shawn Wolf

INVESTMENT COMMITTEE

Alejandro Cañadas, Ph.D., Co-Chair
 Joshua D. Donofry, CIMA@, Co-Chair
 Kimberly Smith Chaney, CPA
 Deepak Kini
 Courtney Mills-Picarelli
 William Randall
 Ben Vivari

PROFESSIONAL ADVISORS COMMITTEE

Jennifer P. Clingan, CPA, Chair
 Kimberly Smith Chaney, CPA

Gordon Cooley
 Eric Dallavalle
 Ashley Goldsborough
 Nathan Harris
 Daniel Tregoning, Esq.

REAL ESTATE COMMITTEE

Ashleigh Rossi, Chair
 Brandon Cannon
 Justin Saltzman

SCHOLARSHIP LEADERSHIP COMMITTEE

Patti Maluchnik, CIC, CBIA, Chair
 Brandon Cannon
 Jacquelyn Grossnickle, Esq.
 Cynthia Palmer

SCHOLARSHIP COMMITTEE

Danielle Adams
 Tina Anderson
 Lindy Angel, Esq.
 Tracy Arnold
 Narayani Baliga
 Gary Bennett
 Eric Brown
 Abby Brusco
 Chris Chase
 Gloria Coleman
 DeVeda Coley, DOL
 Dr. Christopher Currens
 Rev. Dr. Barbara Kershner Daniel
 Lakshmi Darbha
 Breann Day
 Julie DeRoner
 Duane Doxzen
 Mary Ellis
 Jessica El-Zeftawy
 Brigitte Farrell
 Diane Fink
 Araminta Finn
 Laurie Fisher
 Pam Flickinger
 Kelsey Fogle
 Paul Foss
 Ann Fritton
 Griff Garwood
 Mendie Gift
 Suellyn Giserman
 Kathy Gordon

Nancy Gordon
 Chris Griffin
 Jennifer Grove
 Susan Guissinger
 Megan Guzman
 Marcia Hahn
 Gregory Harrison
 Anne Hart
 Bre Harwood
 Ed Haser
 Laura Heck
 Carmen Hernandez, MD
 Clyde Hicks
 Kassie Higgins
 Dr. Kimberly Hirschmann
 Jenny Huseman
 Courtney Hyde
 Michele Inderrieden
 Nadia Jamai
 Inga James
 Lois Jarman
 Lee Jeffrey
 Kim Johnson
 Amy Killian
 Deepak Kini
 Rachael Pashkevich Koontz
 Cameo Lawlor
 Vicki Lee
 Veronica D. Lowe
 Tina Lundstedt
 Grace Lyons
 Susan Lyons
 Richard Maiello
 Matteo Marsella
 Patrick Martin
 Julie Martorana
 Rokhaya Mbengue
 Rebecca McDermott
 Martin McGuigan
 Kerry McHugh
 Jess Miller
 Heidi Miller-Sadoughi
 Desiree Mortenson
 Doug Murphy
 Nicole Myers
 Dr. Andi Overton
 Lisa Owen
 Jared Parsek
 Anne Paxton
 Greg Powell, Ph.D.
 William Randall
 Abbie Ricketts
 Danielle Rizzo
 Heather Rook
 Derek Sanford

Claire Schaivone
 Ann Schreiber
 Benjamin Seibert
 Cathy Seibert
 Susan Shelton
 Robin Sines
 Sally Smith
 Emily Snyder
 Judith Snyder
 Christine Stafford
 Katie Stevens
 Beth Strakonsky
 Col. Joe Strawn
 Susan Thomas
 Kelsey Travers
 Makayla Vaughns
 Maggie Verdoia
 William Wallace
 Alexandra Walsh
 Katharine Warehime
 Charlotte Warrenfeltz
 Jessica Weeman
 Amy Wilkinson
 Christine Williams
 Cindy Williams
 Blair Wilson
 Raymond Wilson
 Robert Wilson
 Heather Wurzer
 Cari-Ann Yarmus
 Lorenzo York
 Sandy Zimmerman

STRATEGIC COMMUNICATIONS COMMITTEE

Louanne Welgoss, Chair
 Brandon Chapman
 Stacey Collins
 Angela K. Dredden
 Whitney Hahn
 Jennifer Huseman
 Sandy Sponaugle

STRATEGIC PLANNING COMMITTEE

Dr. Shawn Wolf, Chair

TRUSTS AND ESTATES COMMITTEE

Ian P. Bartman, Esq.
 Detric L. Kemp, Esq.



FUNDS

ROOTED IN TRUST. GROWING IN IMPACT.

Since 1986, generous donors have created charitable funds at the Community Foundation that continue making a difference year after year—often long after the donor’s lifetime.

Each fund is unique, shaped by the story that inspired its creation and the way the donor intends the money to be used. Some are born out of grief, others out of joy. Some are created for the assurance that a beloved cause will be supported forever, others for the tax advantages that make giving possible. All are expressions of generosity and vision for a better Frederick County.

Donors can choose to be actively engaged in their fund’s grantmaking each year, or take comfort in knowing their gift will create lasting change without their direct involvement. We offer a variety of fund types and giving vehicles to meet every donor’s charitable goals.

Today, our nearly 40-year history includes **more than 840 funds**, with **26 new funds added in FY2025** alone. Together, they represent the trust, passion, and hope of those who believe in the power of philanthropy to shape the future.

Learn more about creating or supporting a fund at FrederickCountyGives.org/Give.



Relatives of Jeremy Mager attended an Urbana High School softball game to celebrate the first grant distribution from **The Jeremy Magers Memorial Baseball and Softball Fund** to the Urbana softball team.

Pictured from left to right: Carleigh Magers, William Magers, Connie Magers, William T. Magers, Sarah Hofman and Urbana High School softball coach Frank Husson.



Fund founder Peggy Waxter poses for a photo with Wayne Dorsey, founder of the Safe Ride Foundation. Peggy’s fund, **The Garrett R. Petronchak Memorial Fund**, distributed a grant to the Safe Ride Foundation this year to support its mission to prevent drunk driving.



NEW 12-to-24 Collaborative Fund

Founded by the 12-to-24 Collaborative to support youth services in Frederick County by strengthening nonprofits and improving access for residents ages 12 to 24.

NEW AARCH Society - African American Heritage Center Fund

Founded by The African American Resources Cultural and Heritage Society, Inc. (AARCH) to develop an African American Heritage Center in Frederick County.

Georgia Marie Abdow Fund

Founded by Mark and Michele Abdow in memory of their daughter as a donor advised fund, with preference given to services that support individuals and their families experiencing substance use disorder.

Adams Family Fund

Founded by Ric and Ann Adams in memory of Merhl and Evelyn Etzler Adams, Dorsey and Virginia Cramer Shipley, and Fred and Alice Cramer Miller as a donor advised fund.

Administrative Fund

Founded by the Community Foundation for its operational support.

Advocates for Homeless Families Endowment Fund

Founded by an anonymous donor for operational support.

Advocates for Homeless Families Legacy Fund

Founded by Advocates for Homeless Families, Inc. to continue their mission of empowering motivated families to overcome homelessness.

AG-C.I.T.E. Fund (Agriculture Community Interactive Teaching Experience)

Founded by Kaitlyn, Ashley, David, and Katherine Fuss with Robert and Susie Fogle to promote agriculture for all ages in cooperation with The Great Frederick Fair, Inc.

All Saints’ Episcopal Church Maintenance Fund

Founded by Nancy N. Franck to support maintenance and renovation.

Alliance to MedChi Medical Scholarship Fund

Founded by Alliance to MedChi for Maryland residents enrolled in an approved State of Maryland medical college and support future physicians.

Alliance to the Frederick County Medical Society Scholarship Fund

Founded by the Alliance for students studying in health-related fields.

American Advertising Federation Scholarship Fund

Founded by its board of directors for students studying communications and related fields.

American Cancer Society Fund

Founded with General Clair Wayne Shisler’s bequest for Frederick County activities.

Arthur O. and Julane P. Anderson Scholarship Fund

Founded by Dr. and Mrs. Anderson for Frederick County residents who are nontraditional students.

Suzanne Michel Anderson Fund for the Key Memorial Chapel

Founded by family members for maintenance and enhancements of Key Memorial Chapel at Mount Olivet Cemetery.

Jonathan Mark and Derek Matthew Angel Scholarship Fund

Founded by Jon and Lindy Angel with preference to Frederick County residents studying information technology or accounting.

Animal Care Field of Interest Fund

Founded by the Community Foundation to support pet care, agriculture animal help, and wildlife support/rescue.



The 12-to-24 Collaborative Fund, established by the 12-to-24 Collaborative, supports initiatives that strengthen youth services in Frederick County. The fund focuses on aiding local nonprofits, promoting best practices, and improving access to services for residents—primarily those ages 12 to 24.

Arc of Frederick County Betty Ann Ramsburg Endowment Fund

Founded by its board of directors for operational support.

Richard and Sally Arnold Family Fund

Founded by Sally Arnold with her 2020 Wertheimer Fellow for Excellence in Volunteerism Award to support Frederick County 4-H Camp & Activities Center, Inc.

Caroline and Jimmy Atkins Fund

Founded by Mr. and Mrs. Atkins for scholarships and grants in Frederick County.

Rollins J. and Mary Marceline Atkinson Scholarship Fund

Founded by Vernon T. and Maralee Atkinson Jones in memory of Mrs. Jones' parents for Frederick County residents, preferably journalism majors.

Christopher W. Ausherman Scholarship Fund

Founded by his family, with preference for those studying construction management.

Ernest W. Ausherman Scholarship Fund

Founded by his family with memorial contributions.

Mr. and Mrs. Ernest W. Ausherman Fund

Founded by Mr. and Mrs. Ausherman as an unrestricted fund.



Emma Baker Fund

Founded by parents David and Catherine Baker to provide grants and scholarships.

H. George Baker Memorial Fund for Epilepsy Support

Founded by wife Elizabeth K. Baker for programs for persons with epilepsy.

NEW Jake Baker 27 Fund

Founded by James and Karen Baker in memory of their son, Jake, to support programs that raise awareness of the importance of mental health and suicide prevention.

Nevin S. Baker Fund

Founded through Mr. Baker's bequest as an unrestricted fund.

Wanda L. Baldwin Fund

Founded through Ms. Baldwin's bequest as a donor advised fund.

Ballenger Creek Elementary School Fund

Founded by Ballenger Creek Elementary School PTA upon Principal Larry Cassel's retirement to enable all students to participate fully in activities, regardless of their ability to pay.

William and Hettie Ballweber Fund

Founded by wife Hettie L. Ballweber to honor William's life work of animal advocacy, rescue, and proactive canine welfare initiatives.

Banner School Endowment Fund

Founded by its board of trustees with gifts from an anonymous donor, Mr. and Mrs. David Belcher, Mr. and Mrs. Charles Smith, and Terri Tucker, and gifts in honor of Mary Beach, for scholarships and other needs.

Bar Association of Frederick County Current Initiatives Fund

Founded by the Bar Association to provide grants to nonprofits.

Bar Association of Frederick County Justice for All Fund

Founded by the Bar Association to ensure availability of competent legal representation for Frederick County residents regardless of their ability to pay.

Steve and PJ Barger Family Fund

Founded by the Bargers for grants and scholarships to Frederick County nonprofits and residents.

Gene, Evelyn and Ernest Family Scholarship Fund II

Founded through Gene Barnhart's estate for Frederick County residents studying agriculture or a related field at University of Maryland.

William E. Barnhart Memorial Fund for Broadfording Church of the Brethren

Founded through Mr. Barnhart's estate to support the church.

William E. Barnhart Memorial Fund

Founded through Mr. Barnhart's estate to provide grants to Frederick County organizations that support direct services to Frederick County residents with cancer.

Sam and Joan Barrick Fund

Founded by the Barricks as an unrestricted fund.

George J. Barthel Scouting Fund

Founded through Mr. Barthel's estate provisions for scouting in Frederick County.

Luke Clemens Bartlett Memorial Athletic Scholarship Fund

Founded by Luke's family to provide sports scholarships to Frederick County youth in kindergarten through 12th grade.

Basford Family Fund

Founded by Dick and Sue Basford for scholarships for students at Frederick Community College or trade and technical schools.

Audrey Pressler Bauman Scholarship Fund

Founded by husband Stephen R. Bauman for Frederick or Walkersville High School graduates.

R. Perry and Ethel Beckley Fund

Founded by Mrs. Beckley for scholarships and grants in Frederick County.

Peter W. Beers Memorial Fund

Founded through Anna Beers' estate to support Frederick Health Hospice.

Believer's Club Fund

Founded by Jeannine Milyard with her 2007 Wertheimer Fellow for Excellence in Volunteerism Award to assist children with special needs and their parents with recreational activities.

Brian and Beth Bell Cancer Research Fund

Founded by the Bells for organizations doing important HPV positive HNSCC (HPV+ Head and Neck Squamous Cell Carcinoma) cancer research.

Gabrielle Diana Kennedy Benton Memorial Fund

Founded by Jay and Melissa Wastler in memory of their daughter for nonprofit organizations that support mental health programs for children and youth.

Beth Sholom Educational Endowment Fund

Founded by Mr. and Mrs. Seymour Stern in honor of Mr. Stern's parents, Herman and Minnie Stern, to support the Congregation's educational activities.

Glenn E. and Helen H. Biehl Charitable Fund

Founded through the Biehls' estate to support Evangelical Lutheran Church and Frederick Health Hospital.

Glenn E. and Helen H. Biehl Scholarship Fund

Founded by Mrs. Biehl for Frederick County residents attending Frederick Community College.

NEW Beyond High School Scholarship Fund

Founded by an anonymous donor to support Frederick County high school graduates returning to their educational pursuits or career training.

Beyond Shelter Frederick Fund

Founded by its board of directors for its emergency food, shelter, prescription, and assistance programs.

Beyond Shelter Frederick, Alan P. Linton, Jr. Shelter Fund

Founded by the Religious Coalition, now known as Beyond Shelter Frederick, to support the Linton shelter facility and operations.

Beyond Shelter Frederick, Emergency Family Shelter Fund

Founded through Carole June Benson's estate to support the Emergency Family Shelter facility and operations.

Big Brothers Big Sisters of Frederick County Endowment Fund

Founded by its board of directors, now supporting grants for youth mentoring.

Mayor James F. Black Scholarship Fund

Founded by son Dr. Dennis E. Black for Town of Thurmont's employees and their legal dependents.

Blessings in a Backpack Frederick Fund

Founded by Hermine Bernstein, Melissa Frank and Barbara Dillon to support the activities of Blessings in a Backpack.

Alvin and Janet Blumenstein Memorial Scholarship Fund

Founded by Nelson and Celia Zahler in honor of Celia's parents for students who exceed the maximum income threshold for government financial aid programs but still have financial need and lack resources to pay for their education.

Bodmer-Willmann Fund

Founded by Nancy A. Bodmer to support operations at Heritage Frederick.

Jim and Jane Bopst Memorial Fund

Founded by family members to support Junior Fire Company No. 2, Inc. in Frederick with essential supplies, training, and equipment.

Debbie Bostian Family and Community Involvement Grant Fund

Founded by The PTA Council of Frederick County, Inc. for grants to PTAs promoting family and community involvement.

Peg and Orley Bourland Educational Assistance Fund for Glade Valley

Founded by the Bourlands with their 2008 Wertheimer Fellow for Excellence in Volunteerism Award for educational support to clients of Glade Valley Community Services in Walkersville.

Dr. Ulysses G. Bourne, Sr. Memorial Scholarship Fund

Founded by daughter Dr. Blanche Bourne-Tyree for students majoring in medicine or a related field.

Scouting America in Frederick County Region Fund

Founded by friends of Donald C. Linton to support Scouting America activities in Frederick County.

Bob Boyer and Elizabeth Reeder Fund

Founded by Bob Boyer and Elizabeth Reeder to support University of Maryland School of Nursing.

Don and Sharon Boyer Fund

Founded by Middletown High School alumni to support participation recognition materials for the Don Boyer Invitational and other track events.

Debbie Wolfe Bradley Scholarship Fund

Founded by the Wolfe family for Walkersville High School graduates pursuing a career in the theater arts.

Elizabeth J. Brady Charitable Fund

Founded by Mrs. Brady with her 2004 Wertheimer Fellow for Excellence in Volunteerism Award for Frederick Rescue Mission, Habitat for Humanity of Frederick County, Mission of Mercy and Salvation Army.

Gifts to any fund are gladly accepted throughout the year, in any amount.



Brandenburg Fund

Founded through the estate of Margaret M. Brandenburg to support Pleasant Valley United Methodist Church.

Joseph Donald Brewer Scholarship Fund

Founded by parents Abigail Richon and William D. Brewer for Urbana High School graduating seniors with dyslexia.

Warner L. "Mike" Brittain/Seneca Football Association Scholarship Fund

Founded by Seneca Football Association for Frederick High School graduating seniors attending a Maryland college or university, Shepherd University, or Gettysburg College.

Betty L. Brown Endowment Fund for St. John's Christian Preschool of Thurmont

Founded by the Preschool's Board of Directors in Mrs. Brown's honor to provide scholarships and financial support.

Isaiah Charles Brown Memorial Fund

Founded by his parents Ralph and Denise Hall Brown as a donor advised fund.

Joseph F. Brown Scholarship Fund

Founded by Joseph and Ann Brown for post-secondary study of disciplines related to land surveying, such as mathematics, geology, or physics.

NEW William H. Browning, Jr. Charitable Fund

Founded through Mr. Browning's estate provisions to provide scholarships to students attending Frederick Community College.

William H. and Marianne E. Browning Memorial Scholarship Fund

Founded by son William H. Browning, Jr. for Frederick County residents attending Frederick Community College.

William H. Browning, Sr., and Marianne E. Browning Unrestricted Fund

Founded by brothers, William H. Browning, Jr. and Robert F. Browning, as an unrestricted fund.

NEW William L. Bruckart, III Scholarship Fund

Founded by wife Peg Bruckart to honor William's legacy by supporting graduating seniors pursuing higher education in fields such as science, the arts, or agriculture.

J. Milton Brunk Memorial Endowment Fund

Founded by son John D. Brunk as an unrestricted fund.

Brunswick Area Fund

Founded by the Honorable and Mrs. William Wenner to support Brunswick activities.

Brunswick Scouting America Troop 277 Fund

Founded by Robert Ward with his 2007 Wertheimer Fellow for Excellence in Volunteerism Award for camperships and Troop materials.

Brunswick Community Club House for Kids Fund

Founded by its board of directors to support nonprofits serving youth ages 18 and under in Brunswick.

Brunswick Community Medical Fund

Founded by Brunswick Medical Center, Inc. to support nonprofits offering medical assistance to Brunswick residents.

Brunswick Community Theater Scholarship Fund

Founded by the Theater for Brunswick High School graduating seniors majoring in theater arts.

Brunswick Emergency Relief Fund

Founded by Sandy Cox with her 2005 Wertheimer Fellow for Excellence in Volunteerism Award for operational support.

Margaret E. Brust Nursing Scholarship Fund

Founded by Mrs. Brust for Frederick County students majoring in nursing.

Buckeystown United Methodist Church Endowment Fund

Founded by Roger F. Nicodemus for operational support.

Ken and Lynn Burdette Donor Advised Fund

Founded by the Burdettes as a donor advised fund.

Richard R. Burgee Memorial Scholarship Fund for Trinity United Methodist Church

Founded by the Church in Mr. Burgee's memory for Church members pursuing a post-secondary or graduate education.

Dola Burkentine Nonprofit Marketing Fund

Founded by Ms. Burkentine for marketing efforts of Frederick County nonprofits.

Butler Collins Community Impact Fund

Founded by RaeAnn Butler with her 2017 Wertheimer Fellow for Excellence in Volunteerism Award to provide grants to Frederick County nonprofits, with a focus on seniors, historic preservation and education.

Mark and Susan Butt Saturday Mornings Fund

Founded by the Butts with sales proceeds of the first published run of Saturday Mornings for grants to nonprofits.

Joseph D. Byrd Fund

Founded through Mr. Byrd's estate to support agricultural and health care organizations as well as need-based scholarships for students at Poolesville High School.

**Major Dan Campbell Veteran Services Fund**

Founded by Dan Campbell with his 2017 Wertheimer Fellow for Excellence in Volunteerism Award to support veterans and Mission of Mercy's medical and dental programs.

C&O Canal Donor Restricted Projects/Andy and Jim Mackintosh Canal Run Point of Rocks Lockhouse Fund

Founded by Andy and Jim Mackintosh to maintain and enhance the Point of Rocks Lockhouse in The C&O Canal National Historical Park.

Marion D. and Alice E. Carmack Endowment Fund

Founded by the Carmacks, now an unrestricted fund.

SSGT Charles I. Cartwright, USMC Memorial Scholarship Fund

Founded by parents Howard and Carol Ann Cartwright for graduating seniors or alumni of Walkersville High School.

Julie Ann Robertson Cashour Memorial Fund

Founded by her family for grants to organizations helping people with a terminal illness, preferably those with neurofibromatosis.

Catoctin Furnace Fund

Founded by Viola Noffsinger with her 2003 Wertheimer Fellow for Excellence in Volunteerism Award to support activities, programs and capital needs of Catoctin Furnace Historical Society.

Catoctin High School Youth Fund

Founded by Calvin Saylor for programs and scholarships for Catoctin High School students.

Catoctin Medical Center Scholarship Fund

Founded by its board of directors for Catoctin High School graduates and others who live in the school's service area to study in the medical/health field.

Catoctin Watershed Preservation Fund

Founded by two Frederick County residents to support the preservation of the Catoctin Watershed, particularly land that has agricultural, historical, environmental or ecological value.

Cavanaugh Memorial Scholarship Fund

Founded by Robert F. and Elizabeth E. Cavanaugh for graduating Middletown High School seniors.

Celebrate Frederick Fund for Community Events and Traditions

Founded by Celebrate Frederick, Inc. to support its mission to preserve traditions and promote community spirit.

Brandon T. Chesnik Memorial Scholarship Fund

Founded by his family for scholarships for Walkersville High School alumni and grants to Hillcrest Elementary School.

Citizens Care & Rehabilitation Center and Montevue Assisted Living Fund

Founded by Charles F. Trunk III and Donald C. Linton to supplement patient care and enhance the lives of residents in both facilities.

City of Frederick Economic Development Fund

Founded by the City of Frederick to support its Department of Economic Development's mission of job creation, revitalization, and reinvestment in the City of Frederick.

Roy and Gloria Clabaugh Scholarship Fund

Founded by Matt and Sandy Wiley for graduates of Catoctin High School attending trade or technical school in Maryland.

James H. and Amy N. Clapp Family Fund

Founded by Mr. and Mrs. Clapp as a donor advised fund.

Lewis I. and Catherine L. Clark Memorial Fund

Founded through Mrs. Clark's charitable remainder unitrust to support programs that assist individuals with cardiac issues, cancer and diabetes in Frederick County.

Saint Peter Claver Scholarship Fund

Founded by anonymous donors for Frederick County residents from under-represented and under-served populations continuing their education at a two or four-year college or university.



The AARCH Society – African American Heritage Center Fund was established by the African American Resources Cultural and Heritage (AARCH) Society to support the creation of an African American Heritage Center.

Colton Clinger Memorial Scholarship Fund

Founded by grandparents Mr. and Mrs. Bertram Edmonston and mother Jennifer Clinger for graduates of Catoctin High School.

Avadna Seward Coghill Scholarship Fund

Founded by Mrs. Coghill's children for Frederick County residents who have achieved the rank of Girl Scout Silver Award or a Girl Scout Leader of three years and pursuing education in environmental or physical science studies.

Albert H. and Etta F. Cohen Charitable Gift Fund

Founded by the Cohens as a donor advised fund.

Dwight and Serene Q. Collmus Family Fund

Founded through Mrs. Collmus' charitable remainder trust as a donor advised fund.

NEW Community Engagement Fund

Founded by the Community Foundation to support its Engagement Committee's activities.

Color on the Creek Fund

Founded by Dr. Peter Kremers with his 2019 Wertheimer Fellow for Excellence in Volunteerism Award to support the ongoing development of the water garden and boat display on Carroll Creek.

Community Emergency Assistance Fund

Founded by the Community Foundation with a gift from Guy Kelly for the Salvation Army's emergency shelter services.

Community Memorial Fund

Founded by the Community Foundation with memorial contributions as an unrestricted fund.

Community Service Fund of Evangelical Reformed Church

Founded by the Church for benevolence.

Gifts to any fund are gladly accepted throughout the year, in any amount.



Compofelice Family Fund for Building Trades

Founded by Susan C. Compofelice to support organizations seeking to help Frederick County residents receive training for construction trades in the Frederick County area.

A. Bryant Converse Charitable Fund

Founded through Mr. Converse's estate to support Frederick County Animal Control.

Converse Family Endowment Fund

Founded through Ruth Converse's charitable trust to support Frederick County Humane Society, Frederick County Landmarks Foundation, and historic preservation in Frederick.

Elmira B. Cook Endowment Fund for the Frederick Rescue Mission

Founded by Mrs. Cook for Frederick Rescue Mission.

Gordon M. and Teresa Warfield Cooley Charitable Gift Fund

Founded by the Cooleys as a donor advised fund.

Gordon and Teresa Cooley Unrestricted Fund

Founded by the Cooleys to provide strategic grants to Frederick County nonprofits with programs focused on the community's greatest needs.

Edwin R. Cornish, Jr. Memorial Fund

Founded by Erin (Ellyn) Cornish in memory of her father for grants to nonprofits that provide services to nontraditional learners.

Mary Gregg Cornish Memorial Fund

Founded by husband Dr. Edwin R. Cornish, Jr. to support master gardener activities, gardening education, community gardens, beautification of public spaces, and library collections related to gardening.

Harry and Mattie Cornpropst Scholarship Fund

Founded through Mrs. Cornpropst's estate provisions for students attending Frederick Community College studying education.

Beatty Cramer House Endowment Fund

Founded by The Society of Colonial Wars in the State of Maryland to support Frederick County Landmarks Foundation maintenance and operation of the Beatty Cramer House.

Cresap's Rifles Post 78, 29th Division Fund

Founded by Cresap's Rifles Post 78, 29th Division and John H. Staley, Jr. to provide grants to nonprofits, with preference to those serving veterans and military related organizations.

Sandra Crist Scholarship Fund

Founded through Ms. Crist's estate for students pursuing a career in animal well-being.

William E. Cross Family Educational Fund

Founded by Mr. Cross for scholarships for students attending Mars Hill College, Frederick Community College, or Montgomery Community College.

Dr. J. Richard Crouse Memorial Scholarship Fund

Founded by John and Katie Fieseler for Frederick or Washington County graduating seniors studying dentistry, medicine or business at University of Maryland.

Dan Crozier Music Trust Fund

Founded with proceeds from the Dan Crozier Music Trust to promote music appreciation, grants to musical organizations, concerts, and music scholarships.



The Tom Vernon and Fred K. Hines Fund was established by Mr. Hines through his estate to support a variety of nonprofits, grants, and scholarships.

C. Raymond and Helen Crum Memorial Fund for Chapel Lutheran Church

Founded by Mildred Nicodemus in memory of her parents to support the general operations of the Church.

Gina M. Cumberland Memorial Scholarship Fund

Founded by husband Michael Cumberland for students pursuing post-secondary education in Maryland.

D Frances R. Darner Scholarship Fund

Founded by Merle L. and R. Rebecca Guyton for students demonstrating community commitment through volunteerism, extracurricular activities and participation in character-building programs.

Thomas R. and Virginia T. Dashiell Memorial Fund

Founded by Mrs. Dashiell's estate plans to support Frederick Health Hospital and Calvary United Methodist Church.

Dr. LeRoy T. and Sandra J. Davis Memorial Scholarship Fund

Founded by Dr. LeRoy T. Davis with preference given to students majoring in nursing.

NEW Deaf Fellowship Fund

Founded by an anonymous donor to provide funding for the Deaf Fellowship ministry at the Frederick Church of the Brethren.

Delaplaine Arts Center Endowment Fund

Founded by The Frederick News-Post for operational support.

Robert L. De Lauter Youth Mentoring Fund

Founded by Mr. De Lauter to support youth mentoring programs, including but not limited to Law Enforcement Explorer Post 1218.

Roger and Golda Delauter Memorial Fund

Founded by Timothy and Patricia O'Toole, in memory of Patricia's parents, to support children with preference to programs for early childhood literacy.

Captain John Ryan Dennison Scholarship Fund

Founded by his family for graduating scholar/athletes of Urbana or Linganore High Schools.

John Ryan Dennison Memorial Fund

Founded by the Dennison family to support the design, construction and maintenance of a memorial project.

Derr Fund

Founded by Frederick County Landmarks Foundation with a contribution from Natelli Communities for historic preservation and scholarly research of Frederick County.

Elizabeth Derr Unrestricted Fund

Founded through Mrs. Derr's estate to support unrestricted grantmaking.

Disabled Citizens of Frederick County United Scholarship Fund

Founded by its board of directors for Frederick County residents with disabilities seeking post-secondary education.

Distinguished Young Women of Maryland Scholarship Fund

Founded by Distinguished Young Women of Maryland, part of a national scholarship program that promotes and rewards scholastic achievement, leadership, and talent in young women, to support its mission.

District 8, Maryland Nurses Association Scholarship Fund

Founded by District 8, Maryland Nurses Association, Inc., for registered nurses pursuing a Bachelor of Science or higher degree in nursing.

Don't Just Stand There, DO SOMETHING Fund

Founded by Gwen Romack and Evan Somerstein to support programs addressing youth homelessness or homeless families with children in Frederick County.

Donald P. Dougherty, Jr. Memorial Fund

Founded by Doris Jean Dougherty in honor of her son for descendants of students who attended Thurmont High School pursuing post-secondary education.

Don Doughty and Linda Moran Urban Garden Fund

Founded by Linda Moran to increase urban gardening opportunities and/or for the enhancement of public green spaces.

Downtown Frederick Partnership Holiday Lights Fund

Founded by its board of directors to support improvements and enhancements to the holiday lights on the trees in downtown Frederick.

Downtown Frederick Youth Fund

Founded by the Community Foundation to support the construction and programming of a Downtown Frederick Youth Center to benefit youth in and around the City of Frederick.

Virginia K. Draper Memorial Scholarship Fund

Founded by Mark and Frances Draper and their daughter Sadie Wiles in honor of their mother and grandmother for Middletown High School graduates studying education.

George and Ruth Dredden Scholarship Fund

Founded by the Dreddens with their 2007 Wertheimer Fellow for Excellence in Volunteerism Award for Frederick County residents pursuing a post-secondary education.

Henry E. Droneburg, III Memorial Scholarship Fund

Founded by his family for Governor Thomas Johnson High School students and graduates studying art, supplies for art classes held at Governor Thomas Johnson High School, or scholarships or equipment for Frederick County Public Schools Career and Technology Center students studying plumbing.

Dudrow Scholarship Fund

Founded by Dorothy Dudrow and her children for Frederick County residents studying agriculture.

C. Lester and Dorothy Dudrow Fund

Founded by the Dudrows as an unrestricted fund.

Lester and Dorothy Dudrow Fund

Founded by the Dudrows and now serving as an unrestricted fund.

Cathie Duncan Speech-Language Scholarship Fund

Founded by Catherine and William Duncan for Frederick County residents with preference to those studying speech and language pathology at the post-secondary and/or graduate level.

William T. Dunkin and Linda S. Walsh Scholarship Fund

Founded through Ms. Walsh's estate for nontraditional students pursuing post-secondary education.

H.B. and Thelma B. Duvall Fund for The Arc on Market

Founded through Mrs. Duvall's estate provisions to support The Arc's services.

E Easels in Frederick Fund

Founded by Easels in Frederick to support art programs in the Frederick County area with preference to youth programs or plein air art.

Educational Enrichment Field of Interest Fund

Founded by the Community Foundation to provide scholarships to students in kindergarten through 12th grade for afterschool or special programs, lessons, camps, field trips and study-abroad programs.

Erwin Eisenhower Fund

Founded through Mr. Eisenhower's trust to support the St. Labre Indian School.

Gifts to any fund are gladly accepted throughout the year, in any amount.



Elder/Senior Care Field of Interest Fund

Founded by the Community Foundation to support programs/initiatives for those age 60 and older.

Joseph E. and Anne E. Elkins Fund

Founded by Anne Elkins to support the charitable and community service activities of Rotary Club of Frederick.

Jean Ellis and Florence Guss Memorial Fund

Founded by Tuviah Guss and Tracey Ellis-Guss in memory of their mothers to provide scholarships to students and grants to local nonprofits.

Emmitsburg Area Fund

Founded by Emmitsburg Area Business and Professional Association to support charitable organizations serving Emmitsburg residents and/or for scholarships.

Emmons Family Charitable Fund

Founded by Harold and Anna Emmons to support nonprofit organizations that serve the aging population or individuals with disabilities.

Engelbrecht-DeGrange Scholarship Fund

Founded by Jacob Engelbrecht for Frederick County residents studying at Hood College, with an interest in Frederick County history.

England Family Fund

Founded by Marlene England with her 2006 Wertheimer Fellow for Excellence in Volunteerism Award to provide support for programs in Frederick County that serve women and children in need.

Enhancing Agriculture Field of Interest Fund

Founded by the Community Foundation to support agriculture education and the promotion of agriculture.

Environmental Preservation Field of Interest Fund

Founded by the Community Foundation to support environment and ecology initiatives.

Frank M. and Helen Elizabeth Erwin Scholarship Fund

Founded through Mrs. Erwin's bequest for Frederick County residents.

Josephine Pearre Etchison Memorial Fund for the Maryland Room of the C. Burr Artz Library

Founded by cousins Eleanor Pearre Abbot and Nancy Pearre Lesure for the acquisition and preservation of materials on Maryland genealogy.

Dr. Warren R. Evans/Frederick County Physical Education Teachers Scholarship Fund

Founded by the Frederick County Association for Health, Physical Education, Recreation, and Dance for Frederick County residents pursuing a college degree in these disciplines.

Dr. David Everhart, Jr. and Marybell C. Everhart Charitable Fund

Founded through Mrs. Everhart's estate provisions for the Episcopal Church of the Transfiguration in Braddock Heights.

Sergeant Lawrence Everhart Chapter of the Sons of the American Revolution Fund

Founded by the Sergeant Lawrence Everhart Chapter to support the Chapter's activities focusing on the importance of the Revolutionary War and its history in Frederick County and the surrounding area.

Dotty Handley Ewing Civic Education in Middle School Fund

Founded by Ms. Ewing's bequest to support programs within Frederick County Public Schools, teaching citizenship and its inherent responsibilities and the skills essential for active and effective participation in our democratic society.

John and Annabelle Eyler Fund for Persons with Disabilities

Founded through Mrs. Eyler's estate provisions to provide grants to organizations serving individuals with disabilities.

F**Fair-McCormack Family Fund**

Founded by Kristopher Fair with his 2013 Wertheimer Fellow for Excellence in Volunteerism Award to provide grants and scholarships.

Donald and Lydia Falconer Scholarship Fund

Founded through Mr. Falconer's estate for Frederick County students enrolled at a trade or technical school.

Families Plus! Fund

Founded by its board of directors, now providing grants to Mental Health Association of Frederick County and Frederick County Fire and Rescue for its Safe Kids Program.

Nathan W. Farlow Memorial Fund for Excellence

Founded by his family to provide post-secondary scholarships to students who are active members of a faith-based organization and have demonstrated community volunteerism and leadership.

FCARE Fund

Founded by the Frederick County Association of Realtors as a donor advised fund.

Walter P. Feaga Memorial Scholarship Fund at Frederick Community College

Founded by daughter Jean Feaga Baden for students studying business.

Feline Welfare Fund

Founded by Robert and Carolyn Moroney to support initiatives that foster the welfare of the feline population in Frederick County.

George and Karen Fetterly Scholarship Fund

Founded by Mrs. Fetterly for non-traditional students pursuing a post-secondary degree.

FFOCAS Animal Shelter Fund

Founded by Frederick Friends of Our County Animal Shelter, Inc. to support renovations and additions to Frederick County Animal Control's shelter.



The Micah 6:8 Fund was founded by Daniel Davis, MD, and Rev. Suzanne Adele Schmidt, Ph.D., to support a variety of nonprofit organizations.

Jay S. and Virginia P. Fifer Fund for The Community Foundation of Frederick County

Founded by the Community Foundation with a gift from the Fifers to support its general operations.

Mary Fifer Church of the Brethren Learning Center Scholarship Fund

Founded by Mrs. Fifer for students enrolled at the Center.

Austin Lewis Filby Memorial Fund

Founded through Mr. Filby's estate, Frederick County Board of County Commissioners, and Frederick County Department of Aging to support the Department's bingo and birthday celebrations for those it serves.

Melvin E. and Esther E. Filler Fund

Founded through Mrs. Filler's estate to support St. Paul's Evangelical Lutheran Church and Walkersville Volunteer Rescue Company.

Mary L. Fiumara Scholarship Fund

Founded by Paul A. Fiumara in memory of his wife for parishioners of St. Timothy Roman Catholic Church to attend Catholic school in Frederick County.

Alden E. Fisher Fund

Founded by Mr. Fisher to support Frederick Health Hospital, Hood College and YMCA of Frederick County.

Alden and Harriet Fisher Scholarship Fund

Founded by the Fishers for Hood College students.

Alden E. and Harriet K. Fisher Fund

Founded through Mrs. Fisher's estate provisions to support the Community Foundation's activities.

David J. A. Fisher Scholarship Fund

Founded by Frederick County Public Schools for graduates of Catocin High School pursuing a career in education.

Pauline Draper Fisher Scholarship Fund

Founded through Mrs. Fisher's estate provisions for graduating seniors of Catocin High School enrolled at Towson University.

Robert and Anne Fisher Scholarship Fund for St. John's Catholic Prep

Founded by Mrs. Fisher for Frederick County students to attend the school.

Joseph T. Fiumara Memorial Fund

Founded by Paul Fiumara in memory of his brother for nonprofit organizations that serve children without homes, from a single guardian home, or who are orphaned.

Leah D. Fleming Fund Supporting American Red Cross

Founded by Ms. Fleming with her 2012 Wertheimer Fellow for Excellence in Volunteerism Award to support American Red Cross' provision of direct services to Frederick County residents.

Flowers Over Frederick Fund

Founded by the Flowers Over Frederick Committee to support hanging flower baskets and general flower maintenance in downtown Frederick.

David A. Fogle Fund

Founded through Mr. Fogle's bequest to support Frederick National Little League.

Rhema H. Fogle Memorial Endowment Fund

Founded through Ms. Fogle's bequest for nonprofit organizations providing services to people with financial need who have suffered from fires, floods and other catastrophes.

Austin and Lillian Foland Scholarship Fund

Founded by Mr. Foland for Frederick High School graduates attending Frederick Community College.

Foland Family Scholarship Fund

Founded by Ronald and Edith Foland for Frederick County residents with preference given to those studying construction or building trades at Frederick Community College.

Lynn and Betty Follin Scholarship Fund

Founded by the Follins to provide scholarships to Brunswick High School graduating seniors who are attending Frederick Community College.

FoodPRO CORP Fund

Founded by FoodPRO CORP as a donor advised fund.

Ford/Tolman Fund

Founded by an anonymous donor as a donor advised fund in memory of Franklin and Anna Tolman.

George D. Ford, Jr. and Barbara S. Ford Scholarship Fund

Founded through Mrs. Ford's estate provisions for students pursuing a career in education.

Forever Frederick County Campaign Fund

Founded by its board of trustees to support the Community Foundation's discretionary grantmaking and strategic initiatives.

Lewis and Clara Fraley Memorial Fund

Founded by Scott and Marie Elena Fraley in memory of his parents for scholarships to Frederick County students and grants to Frederick County nonprofits.



Gifts to any fund are gladly accepted throughout the year, in any amount.

Francis Scott Key Memorial Fund

Founded by the Francis Scott Key Memorial Foundation to care for the Francis Scott Key monument at Mount Olivet Cemetery in Frederick and to educate the community about Francis Scott Key's historical significance.

Francis Scott Key Post #11/Clifford M. Yinger Children and Youth Fund

Founded by the American Legion with Mr. Yinger's bequest for children's programs and scholarships.

Franck/Greenwood Fund

Founded by the Franck and Greenwood family as a donor advised fund.

Nancy Nicodemus Franck Scholarship Fund

Founded by Mrs. Franck for Frederick County high school graduates studying elementary education at Frederick Community College.



Founded by her sons in their mother's memory, **The Fran Murray Scholarship Fund** was established to provide scholarships to students who have participated in the livestock programs of the Howard County (Maryland) 4-H Program.

Frederick Area Ministerial Association Fund

Founded by the Association as a donor advised fund.

Frederick Art Club Scholarship Fund

Founded by its executive committee for those pursuing studies in the visual arts.

Frederick Arts Council Fund

Founded by its board of directors in support of its programs and operations.

Frederick Arts Council Thelma Gross Music Scholarship Fund

Founded by its board of directors for music scholarships.

Frederick Brick Works, Inc. Fund

Founded by its board of directors as an unrestricted fund.

Frederick Center Fund

Founded by Peter Van Horn Brehm with his 2015 Wertheimer Fellow for Excellence in Volunteerism Award for program support.

Frederick Chorale Fund

Founded by its board of directors for the Chorale's activities.

Frederick Coffee Club Memorial Fund

Founded by the Frederick Coffee Club to provide scholarships to Frederick County residents.

Frederick Community Action Agency Endowment Fund

Founded by Austin F. Foland for Friends of Neighborhood Progress, Inc. to provide meals and food through the City of Frederick Department of Housing and Human Services.

Frederick Community College Graduate Scholarship Fund

Founded by Donald C. Linton for FCC graduates who are continuing their education at a four-year college or university, with preference to business majors studying accounting.

Frederick Community College Graduate Scholarship to Mount Saint Mary's University Fund

Founded by Mr. and Mrs. W. Jerome Offutt for FCC graduates attending Mount Saint Mary's University.

Frederick Community College Student Scholarship Fund

Founded by Donald C. Linton for undergraduate scholarships.

Frederick Community Concert Scholarship Fund

Founded by its board of directors for students studying music.

Frederick County Agriculture Scholarship Fund

Founded by Frederick Jaycees for Frederick County residents studying agriculture.

Frederick County AIDS/HIV Education and Services Endowment Fund

Founded by Roger F. Nicodemus to support AIDS/HIV programs.

Frederick County Business Roundtable for Education Fund

Founded by the FCBRE for operational support. *(closed as of 6/30/2025)*

Frederick County Cardiac Services and Prevention Fund

Founded by Donald C. Linton for programs supporting cardiac health, including prevention and education, as well as programs that address the needs of people with cardiac disease.

Frederick County Conservation Fund

Founded by its board of directors for scholarships to conservation majors and grants to nonprofits supporting conservation.

Frederick County Developers, Inc. Fund

Founded by Ernest W. Ausherman, George C. Stauffer and Norman Waltz as an unrestricted fund.

Frederick County 4-H Camp Center Fund

Founded by George C. Stauffer, G. Douglas Stauffer and Sharon Stauffer Barrick for camp activities.

Frederick County 4-H Therapeutic Riding Program Fund

Founded by anonymous donors for operational and programming support.

Frederick County Holstein Association Endowment Fund

Founded by its board of directors for financial support for programs and activities benefiting youth interested in agriculture.

Frederick County Humane Society Fund

Founded by its board of directors for operational support.

Frederick County Landmarks Foundation Fund

Founded by its board of directors for operational support.

Frederick County Pomona Grange #11/Burall Brothers Memorial Scholarship Fund

Founded by Pomona Grange #11 and the families of William E. Burall, Jesse I. Burall, Sr., and W. Leroy Burall, with preference given to Frederick County Grange members or children or grandchildren of Grange members.

Frederick County Public Libraries Capital Fund

Founded by its board of trustees for capital improvements and purchases.

Frederick County Public Libraries Endowment Fund

Founded by its board of trustees for operational support.

Frederick County Public Libraries Fund

Founded by its board of trustees to support operating costs and special projects of Frederick County Public Libraries.

Frederick County Public Schools Current Initiatives/Join the Band Fund

Founded by Frederick County Public Schools and Andy Carignan for instruments for students in music activities.

Frederick County Public Schools Current Initiatives/Technology for Education Fund

Founded by Frederick County Public Schools to support technology in the classroom and ensure students have access to current technology in their learning environments. *(closed as of 6/30/2025)*

Frederick County Public Schools Donor Restricted Projects/Ruth Gardner Memorial Scholarship Fund

Founded through Mrs. Gardner's bequest for Middletown High School graduating seniors, preferably business majors.

Frederick County Public Schools Donor Restricted Projects/Sabillasville Environmental School Media and Student Activities Fund

Founded by Frederick County Public Schools for activity and enrichment programs at Sabillasville Environmental School.

Frederick County Public Schools Donor Restricted Projects/Student Mechanical Trades Scholarship Fund

Founded by Frederick County Mechanical Trades Foundation for students pursuing careers in the mechanical trades.

Frederick County Public Schools Donor Restricted Projects/Students Construction Trades Scholarship Fund

Founded by Frederick County Construction Trades Foundation for students in the construction trades and for grants to attend competitions.

Frederick County Public Schools Donor Restricted Projects/Urba Foundation Scholarship Fund

Founded by Natelli Communities for Urbana High School graduates.

Frederick County Public Schools (FCPS) Gifts for Education Fund

Founded by the Board of Education with bequests from Frank Lewis and Grace Gaver for student enrichment programs.

Frederick County Retired School Personnel Association Scholarship Endowment Fund

Founded by its board of directors for students pursuing education careers.

Frederick County Retired School Personnel Association/Dr. Richard and Patricia Petre Scholarship Fund

Founded by Dr. and Mrs. Petre for Frederick County residents pursuing a degree in teacher education.

Frederick County Scouting Scholarship Fund

Founded by Richard M. Golling, Jr. with his 2013 Wertheimer Fellow for Excellence in Volunteerism Award for students involved in scouting.

Frederick County Workforce Services Fund

Founded by Frederick County Workforce Services and Frederick County Board of County Commissioners for employment programs.

Frederick Elks Lodge #684 Youth Endowment Fund

Founded by its board of directors for youth activities.

Frederick Health Hospice Fund

Founded by Dr. P. Gregory Rausch for operational support.

Frederick Health Hospital Fund

Founded by Mr. and Mrs. Charles V. Main for hospital programs.

Frederick High School Centennial Scholarship Fund

Founded by the Frederick High School Scholarship Committee for its graduates.

Frederick Historic Clock Tower Preservation Fund

Founded by Evangelical Reformed United Church of Christ to support the preservation of the City of Frederick's Historic Clock Tower structure located atop Trinity Chapel.

Frederick Historic Documentary Fund

Founded by Donald C. Linton to support efforts to capture and preserve Frederick County history through the production of books or other written, visual or oral media.

Gifts to any fund are gladly accepted throughout the year, in any amount.



Frederick Jaycees Fund

Founded by its board of directors as a donor advised fund.

Frederick Keys Care Fund

Founded by the Frederick Keys in memory of Joel A. Stephens for grants to nonprofits serving children coping with illness, personal loss and/or disabilities.

Frederick Medical Foundation Fund

Founded by its board of trustees for medical scholarships and grants.

Frederick Mutual Insurance Company Donor Advised Fund

Founded by its board of directors to provide grants to nonprofits.

Frederick Mutual Insurance Company Fund

Founded by its board of directors as an unrestricted fund.

Frederick Police Department Endowment Fund

Founded by the Community Foundation to honor retired Chief Charles V. Main for scholarships and support for Frederick Police Department families.

Frederick Rescue Mission Fund

Founded by an anonymous donor for operational support.

Frederick Symphony Orchestra Fund

Founded by the Orchestra for operational support.

Frederick Woman's Civic Club - Friends of the Child Advocacy Center of Frederick County Fund

Founded by Frederick Woman's Civic Club, Inc. to benefit the Child Advocacy Center.

Frederick Woman's Civic Club, Inc. Scholarship Fund

Founded by the Frederick Woman's Civic Club, Inc. for Frederick County residents that support nontraditional, undergraduate, traditional, and vocational students with financial need.

Fredericktowne Players Fund

Founded by its board of directors, now providing support for theater arts including educational activities, theatrical productions, and theatre arts organizations.

Friends of ALICE Scholarship Fund

Founded by John and Mary Ellen Menke for residents of Frederick County within ALICE households to assist with higher education costs.

Friends of Baker Park Fund

Founded by its board of directors to support the maintenance and long-term preservation of Baker Park.

Friends of Citizens Care & Rehabilitation Center and Montevue Assisted Living Fund

Founded by Charles F. Trunk, III and Donald C. Linton to supplement patient care and for small capital purchases and enhancements for both facilities.

Friends of Hospital Park at Trail Avenue Fund

Founded by its board of directors for revitalization and ongoing development of Hospital Park at Trail Avenue in Frederick.

Friends of Schifferstadt Fund

Founded by the Frederick County Landmarks Foundation for Schifferstadt's maintenance.

Friends of SOAR Fund

Founded by Mary Giles Ellis with her 2022 Wertheimer Fellow for Excellence in Volunteerism Award to provide ongoing support for Supporting Older Adults Through Resources' efforts to assist lower income seniors.

Friends of The Great Frederick Fair Fund

Founded by J.R. Ramsburg, Jr., for community grants, preferably for agriculture education and agriculture industry promotion in Frederick County.

Friends of Waterford Park, Inc. Fund

Founded by Virginia K. Brace with her 2016 Wertheimer Fellow for Excellence in Volunteerism Award to support maintenance and improvements to Waterford Park and Rock Creek Park.

Emory V. and Elizabeth Frye Scholarship Fund for Brunswick

Founded by Mrs. Frye for Brunswick High School graduates pursuing education careers.

Fund for Catholic Education/Kindergarten Through University

Founded by Peter H. Plamondon, Sr., for grants to Frederick County Roman Catholic educational institutions and scholarships for students attending those institutions.

Fuss Family 4-H Camp Center Volunteer Fund

Founded by Christy Fuss with her 2018 Wertheimer Fellow for Excellence in Volunteerism Award to support Frederick County 4-H Camp & Activities Center.

**Gene G. Gardner Memorial Fund**

Founded through Mr. Gardner's estate provisions as an unrestricted fund.

Robert E. Gearing National Museum of Civil War Medicine Endowment Fund

Founded by Fredericktown Bank's Board of Directors and the Museum for operational support to honor Mr. Gearing's activities with both organizations.

Jay "Doc" Geiser Fund

Founded by family members in memory of Jay "Doc" Geiser to provide grants to the Frederick County Career and Technology Center for supplies, tools and exam fees for students in culinary arts programs.

Harry George and Dee Dolan Charitable Fund

Founded by Mr. George and Ms. Dolan as a donor advised fund.

George Wesley Gilbert Memorial Scholarship Fund

Founded by wife Freda Gilbert for Frederick County Public Schools graduates attending trade or technical schools.

Loretta C. Gilbert Fund for The Community Foundation of Frederick County

Founded through Mrs. Gilbert's estate to support the Community Foundation's operations.

Loretta C. Gilbert Scholarship Fund

Founded through Mrs. Gilbert's estate for graduates of St. John's Catholic Prep.

Girl Scout Council of the Nation's Capital/Grants for Girls Fund

Founded by Frances A. Randall to support activities and camperships for Frederick County Girl Scouts.

Peggy Githerman Scholarship Fund

Founded through Ms. Githerman's estate for students enrolled at Frederick Community College pursuing a career in respiratory or physical therapy.

Glade United Church of Christ Endowment Fund

Founded through a trust from the late Mr. and Mrs. Clayton Zimmerman for operating support.

Bess B. and Franklin S. Gladhill Fund

Founded by Bess Gladhill for the Community Foundation's discretionary grantmaking and operating support.

Bess and Frank Gladhill Fund for The Community Foundation of Frederick County

Founded by the Gladhills for the Community Foundation's operations.

Bess and Frank Gladhill Fund for Goodwill Industries of Monocacy Valley

Founded by the Gladhills for Goodwill's programs to train persons with disabilities.

Franklin and Bess Gladhill Fund for Agriculture Education

Founded by the Gladhills for agricultural education within Frederick County Public Schools.

Good Neighbor Fund for Seniors

Founded by Donald C. Linton to support individuals 60 years of age or older who experience crisis and need financial assistance.

Gou Family Charitable Fund

Founded by Dr. and Mrs. Ching Gou as a donor advised fund.

Grace UCC Endowment Fund

Founded by its board of trustees with memorial contributions for activities and capital needs.

Grace UCC/Austin and Lillian Foland Fund

Founded by Mr. Foland for operational support.

Grace UCC/Elizabeth Shuff Memorial Fund

Founded by the Church to support its activities, programs and capital needs.

Graceham Moravian Church Fund

Founded by Calvin and Ruth Sayler to support the activities and operations of Graceham Moravian Church.

Graceham Moravian Church Cemetery Fund

Founded by Calvin E. Sayler for the historic cemetery's maintenance.

Graduate Scholarships Field of Interest Fund

Founded by the Community Foundation to support students pursuing graduate and professional degrees, certificates, licensures, and career ladder advances.

C. Ray and Dorothy Barnhart Green Memorial Scholarship Fund

Founded by Mrs. Green for Catocin High School graduates studying the arts, sciences, engineering, or business.

James M. Green Fund

Founded by Mr. Green through estate provisions to support students at Frederick and Governor Thomas Johnson High Schools for music instruction and music scholarships at Frederick Community College, and stipends for Frederick County residents launching careers in the performing arts.

John and Ginny Greene Music Scholarship Fund

Founded by the Greenes for Frederick County Public Schools graduates studying music or a related field.

John "Jack" Griffin Scholarship Fund

Founded by Earl Main for Frederick High School students pursuing a degree in physical education.



Created by a group of community volunteers, **The Mayor Ron Young Tribute Sculpture Project Fund** was created to support the design, creation, and placement of a statue within Carroll Creek Linear Urban Park to honor Mayor Ron Young's leadership that brought about the renaissance and revitalization of downtown Frederick, Maryland.

Esther E. Grinage Scholarship Fund

Founded through Marguerite Quinn's bequest for scholarships, preferably students studying education.

Michael Grosh S.A.R. Fund

Founded with a bequest from Frederick Mathias Michel for funding for the Sergeant Lawrence Everhart Chapter of the Sons of the American Revolution and scholarships for students attending Frederick Community College.

"Judge" William B. Gross Fund

Founded by daughter Anne-Lynn Gross to support Frederick Rescue Mission.

"Judge" William B. Gross Scholarship Fund

Founded through the estate of Anne-Lynn Gross for deserving students.



Gifts to any fund are gladly accepted throughout the year, in any amount.



Edward D. Grove, Sr. Scholarship Fund

Founded by Mr. and Mrs. Edward Dawson Grove, Jr. and Susan Grove Skelly for Frederick County residents studying agriculture.

Erma Stull Grove Scholarship Fund

Founded by Mrs. Grove for Frederick County graduating seniors majoring in mathematics or science.

Grove Foundation Fund

Founded by Larry and Deborah Grove to support the greatest needs of veterans and soldiers residing in Maryland.

James H. Grove, Jr. Family Scholarship Fund for Friends of Catholic Education

Founded by the Grove family for scholarships through Friends of Catholic Education.

The John Healey Scholarship Fund, established by the trustees of the Weinberg Center for the Arts, Inc., supports Frederick County residents pursuing degrees in the performing arts. Created in honor of John Healey, the fund reflects the Weinberg Center's commitment to fostering the growth, education, and vision of local artists.

Gloria M. "Stretch" Grossnickle Memorial Fund

Founded by friend William H. Browning, Jr. to support the Harp Medical Center and its mission to provide medical services and healthcare education in the Middletown Valley.

Grossnickle Family Scholarship Fund

Founded by Andrew Grossnickle for students studying agriculture, or those raised on a farm and pursuing post-secondary education.

NEW Richard and Mary Sue Grossnickle Scholarship Fund

Founded by Richard Grossnickle to support students pursuing careers in agriculture, nursing, or the trades.

Bernard L. Grove, III and Mary Posta Grove Memorial Scholarship Fund

Founded by Bernard L. Grove and his family for students to attend St. John's Catholic Prep.



H&F Railway Fund

Founded by Alex M. Postpischil to support the Hagerstown and Frederick Railway Historical Society.

Carlton B. and Darlene Lin Oi Haakinson Fund

Founded through Carlton B. Haakinson's estate provisions to benefit Hospice of Frederick County, Frederick County Animal Control and fields of interest including veteran services and the Hispanic community in Frederick County.

Norine Haas Mental Health Scholarship Fund

Founded by Mental Health Association of Frederick County to honor Mrs. Haas' tenure as CEO for professional development and education for Mental Health Association staff.

Haas Family Scholarship Fund

Founded by Rev. and Mrs. Theodore Haas in memory of son Robert for Frederick High School graduating seniors.

Habitat for Humanity of Frederick County Fund

Founded by its board of directors for operational support.

Hahn Transportation Scholarship Fund

Founded by Mr. and Mrs. Robert Windsor, with preference to residents of New Market.

James R. Hahn Memorial Scholarship Fund

Founded by daughter Rebecca Hahn Windsor for students studying in the transportation field.

Hall-Buxton Educational Fund

Founded by Chandra Dawn Buxton in honor of her father Arthur Brent Hall and her husband Roger's 70th birthday for scholarships for Urbana or Damascus High Schools graduates.

Hallein Advisory Fund

Founded by Katrina S. Hallein as a donor advised fund.

Halleman Family Fund

Founded by Diana R. Halleman with her 2014 Wertheimer Fellow for Excellence in Volunteerism Award to support revitalization projects in the community, including beautification efforts, facade improvements, and community events.

William D. Hammond Scholarship Fund

Founded by McLean, Koehler, Sparks & Hammond and sons, Philip and William, Jr., in honor of Mr. Hammond's 50-year accounting career to assist Frederick County residents, preferably accounting majors.

NEW The Dr. J. Elmer Harp Scholarship Fund

Founded by The Dr. J. Elmer Harp Medical Center, Inc. to support students in the Middletown Valley area who are pursuing careers in healthcare-related fields.

Aimée Belle Harper Scholarship Fund

Founded by St. Paul's Evangelical Lutheran Church of Utica for Church members.

Eleanor Harper Music Scholarship Fund

Founded by husband Robert Harper for children with musical talents and an interest in performance.

John Franklin Harrison Memorial Scholarship Fund

Founded by parents Francis E. and Edwina L. Harrison for Frederick County residents, with preference to Linganore High School graduates with learning disabilities or attending a trade or technical school.

Charles E. Hartman Scholarship Fund

Founded by Jacques DeMolay Commandery #4, Knights Templars to provide grants to the Career and Technology Center of Frederick County Public Schools for students studying welding and/or construction trades.

Dr. Christopher M. Hassett Science Scholarship Fund for St. John's Catholic Prep

Founded by parents Maurice and Mary Hassett for the School's graduates to study physical sciences.

Steve Hassett Memorial Scholarship Fund

Founded by wife Patricia Hassett for Walkersville High School varsity athletes with preference given to law enforcement/criminal justice majors.

Bill and Mary Haugh Charitable Fund

Founded by the Haughs for Frederick County nonprofits serving residents experiencing personal loss from fire or other disasters or facing emergencies and needing food, shelter, and clothing.

Jeffrey Hayek Memorial Fund

Founded by parents Brian and Robin Hayek to create and maintain a recreation baseball field and to provide baseball/softball equipment for youth.

Jeffrey Hayek Scholarship Fund

Founded by the Hayek family for graduating seniors from Linganore High School or Oakdale High School.

NEW John Healey Scholarship Fund

Founded by the Weinberg Center for the Arts, Inc. in honor of John Healey, retired executive theater manager, to support the development, education, and vision of artists in Frederick.

Health Care Field of Interest Fund

Founded by the Community Foundation to support health care and health-related initiatives and scholarships.

Health Fund for Frederick County Youth

Founded by Donald C. Linton for extraordinary and/or life-threatening medical needs of Frederick County children.

Heartly House Children's Services Endowment Fund

Founded by its board of directors and the Board of Trustees of the former Exchange Sponsored Child Abuse Prevention Effort for Heartly House's children's services.

Sue Hecht Heartly House Fund

Founded by its board of directors for operational support.

Elaine A. Heiberg Scholarship Fund for the Arts

Founded by Barbara O. Clary and Ms. Heiberg's friends in honor of her 80th birthday for students studying the arts.

D. Hunt and Joan Hendrickson Fund

Founded by the Hendricks as a donor advised fund.

Joan Hendrickson Fund

Founded by Mrs. Hendrickson for grants to organizations that aid women and children in Frederick County.

Mary Mason Hendrickson Memorial Fund

Founded by Mr. and Mrs. John D. Hendrickson II in memory of Mr. Hendrickson's mother for children's programs.

Michael David Hendrix Memorial Scholarship Fund

Founded by wife Linda Agar-Hendrix for Frederick County public high school graduates, preferably studying information technology, the sciences, music, or the arts.

Kevin and Jeannie Hessler Fund

Founded by the Hesslers as a donor advised fund.

Kiyoshi and Thelma Higuchi Endowment Fund

Founded through Mrs. Higuchi's estate provisions to support Frederick Arts Council, Girl Scout Council of Nation's Capital, ACTS Legacy Foundation, Frederick County Public Libraries, City of Frederick Office of Special Events, Frederick County Public Schools Fine Arts Department, Federated Charities, and American Heart Association.



Gifts to any fund are gladly accepted throughout the year, in any amount.

Thelma T. Higuchi Fund for Heart Mountain Wyoming Foundation

Founded through Mrs. Higuchi's estate provisions to support the foundation.

NEW Tom Vernon and Fred K. Hines Fund

Founded through Mr. Hines' estate provisions to provide grants for nonprofits and scholarships for students pursuing higher education in agricultural sciences.

Bonnie Kitchen Hinkle Memorial Scholarship Fund

Founded by husband Darl W. Hinkle and daughter Cynthia Hinkle Pickett, preferably for Middletown High School graduates pursuing a nursing degree.

Historic Preservation Field of Interest Fund

Founded by the Community Foundation to support preservation of the past—historic landmarks, structures, artifacts—for future generations.

Historic Sites Consortium Endowment Fund

Founded by its board of directors for operational support.

Charles W. Hoff, III and Margaret O. Hoff Family Fund

Founded by the Hoff's as a donor advised fund.

Edwin and Melanie Hoffman Family Fund

Founded by the Hoffman's children to support critical needs in Frederick County.

Pearl Hoffman, Robert William Main and William S. Berry, Sr. Memorial Fund

Founded to support Heartly House.



The Key City Rotary Philanthropic Fund was created by Key City Rotary to further its philanthropic activities and fulfill its mission of working to make a meaningful difference in Frederick County.

Robert J. Hogan Memorial Scholarship Fund

Founded by Monocacy Aquatic Club to provide scholarship support for college-bound graduating seniors.

Robert J. and George J. Hogan, Jr. Memorial Fund

Founded through Irene Hogan's bequest for students pursuing careers in the construction trades and grants supporting Frederick County Construction Trades Foundation, Inc.

Charles and Teresa Hoke Endowment Fund

Founded through Mr. and Mrs. Hoke's estate provisions to support United Way of Frederick County and Homewood Living Frederick.

Cecil K. Holter, Jr. and Charlotte S. Holter Memorial Scholarship Fund

Founded by sons Kurt Holter and Eric Holter for students attending Frederick Community College, Hood College or Mount St. Mary's University.

Hulda E. Holter Scholarship Fund

Founded by Mrs. Holter for Brunswick or Middletown High School graduates pursuing a nursing career.

Holy Family Catholic Community Fund

Founded with M. Michael Crewe Judge's bequest for a church liturgical fund.

NEW Michael A. Hombach Scholarship Fund

Founded by wife Marisa Hombach to support students graduating from Urbana High School or Walkersville High School who plan to study education, social work or behavioral health.

Homewood Foundation Fund

Founded by its board of trustees for operational support.

Hood College Endowment Fund

Founded with Phebe Zimmerman's bequest for operational support.

Ellis and Lillian Hood Family Endowment Fund

Founded by the Hoods for grants to nonprofits and scholarships to Frederick County residents.

Betty Markey Hooper Scholarship Fund

Founded by children Robert Hooper and Elizabeth Stauffer for Walkersville High School graduating seniors, preferably strong "B" students attending Hood College.

Robert G. Hooper Family Fund

Founded by Mr. Hooper as a donor advised fund.

Robert G. Hooper Unrestricted Fund

Founded by Mr. Hooper as an unrestricted fund.

Sharon I. Hooper Fund for Children

Founded by parents Mr. and Mrs. U. Mehrl Hooper for programs serving families with children coping with catastrophic illness.

U. Mehrl and Margaret T. Hooper Scholarship Fund

Founded by Mrs. Hooper for Frederick County residents attending a trade or technical school.

U. Mehrl, Margaret T., and Sharon I. Hooper Fund

Founded by Margaret Hooper for nonprofits serving Frederick County residents under age 18.

Russell Z. and Virginia T. Horman Memorial Scholarship Fund

Founded by Mrs. Horman for Frederick County residents.

James W. Houck Memorial Scholarship Fund

Founded by parents Mr. and Mrs. Robert Houck for Brunswick High School graduating seniors.

Forest L. Hough Endowment Fund

Founded by Mr. Hough for scholarships to students graduating from Brunswick and Poolesville high schools, majoring in horticulture, agriculture, trade and/or technical fields, divinity or a divinity-related field.

Forest Lee Hough and Alice Jean Stine Fund

Founded by Ms. Stine in memory of Forest Lee Hough to support the Salvation Army's initiatives.

J. Wilmer "Pete" and Margaret Holter House Memorial Scholarship Fund

Founded by the Houses' heirs for Middletown High School graduates studying agriculture or a related field.

Dr. Mary P. Howell and Steven J. Klein Family Fund

Founded by Dr. Howell and Dr. Klein for scholarships to residents of Frederick, Garrett, Allegany and Washington Counties enrolling in graduate and doctoral programs.

Jacob W. Hubble Memorial Scholarship Fund

Founded by parents Sara J. Ely and Barry Hubble for graduates of Linganore or Oakdale High Schools.

J. Richard and Margaret A. Hudson Endowment Fund for Frederick Health Hospital's Emergency Services

Founded by the Hudsons for emergency services at Frederick Health Hospital.

Human Services Field of Interest Fund

Founded by the Community Foundation to assist nonprofits serving individuals with mental, financial, or physical needs.

William Hurwitz Memorial Endowment Fund

Founded by Mr. and Mrs. Jeffrey Hurwitz in memory of Mr. Hurwitz's father as a donor advised fund.

I-K

I Believe in Me, Inc. Fund

Founded by Aje Hill with his 2018 Wertheimer Fellow for Excellence in Volunteerism Award for operating support.

Vince and Guelda Imirie Fund

Founded by Mrs. Imirie to support the Community Foundation, The Norine Haas Mental Health Scholarship Fund, Frederick Health Hospital, Mental Health Association of Frederick County, Kline Hospice House, and Glade United Church of Christ.

Sharon and Jeanne Jacko Veterans Fund

Founded by Sharon Jacko with her 2023 Wertheimer Fellow for Excellence in Volunteerism Award to support veterans in Frederick County.

Nicholas B. Jarvis Memorial Scholarship Fund

Founded by parents Darren and Mary Jarvis for Frederick, Urbana, or Tuscarora High Schools graduating seniors studying forestry, agriculture, land management, veterinary medicine, marine biology, early childhood education, history, science, and sports medicine.

Jeanne Bussard Center Endowment Fund

Founded by its board of directors, now providing operational support for The Arc of Frederick County.

Jefferson Ruritan Club Scholarship Fund

Founded by Jefferson Ruritan Club for students residing in the Jefferson area, children or grandchildren of Jefferson Ruritan Club members, or members of the Random Acts of Kindness Club.

George E. Jewell Family Fund

Founded by the George E. Jewell Foundation as a donor advised fund.

Job Training and Skills Development Field of Interest Fund

Founded by the Community Foundation to support quality workforce development.

Johnson STEM Education Fund

Founded by Patrick and Virginia Johnson to support Science, Technology, Engineering and Mathematics (STEM) programs and STEM experiential learning opportunities.

NEW Elaine Junker Hospice Enrichment Fund

Founded by Elaine Junker with her 2024 Wertheimer Fellow for Excellence in Volunteerism Award to support Frederick Health Hospice.



The William H. Browning, Jr. Charitable Fund was established through provisions in Mr. Browning's estate to provide scholarships for students attending Frederick Community College.

Karen S. Justice Scholarship for Study Abroad Fund

Founded by Ms. Justice for students to study abroad for post-secondary education.

Candace Gove Kakel Memorial Scholarship Fund

Founded by mother Mary Gove for Linganore High School graduates.

Robert E. and Maureen M. Kallstrom Memorial Scholarship Fund

Founded by Mrs. Kallstrom with preference to students majoring in music or computer science/information technology.

Richard W. Kanode Fund

Founded through Mr. Kanode's estate provisions to benefit Heartly House and other organizations that provide care, support and services to children and rescue animals.

Richard W. Kanode Charitable Fund

Founded through Mr. Kanode's charitable remainder trust as a donor advised fund.



Gifts to any fund are gladly accepted throughout the year, in any amount.

Richard W. Kanode Farm Park Fund

Founded by Mr. Kanode to support development, maintenance and operation of the Richard W. Kanode Farm Park.

Mark S. Kavanaugh Endowed Scholarship Fund to Benefit the Phoenix Recovery Academy

Founded in memory of Mark S. Kavanaugh to support The Phoenix Foundation of Maryland.

Paul and Pamela Kavanaugh Charitable Fund

Founded by the Kavanaughs to support Hickok Center for Brain Injury, Inc. in Rochester, NY and Centro De Apoyo in Riverdale, MD.

Keep Warm and Thrive Fund

Founded by an anonymous donor to support the critical needs of Student Homelessness Initiative Partnership of Frederick County (SHIP).

Eugene A. and Pauline B. Kefauver Family Fund

Founded through the Kefauvers' estate provisions to support Hoffman Homes for Youths, Foundation of FirstHealth, The Village Chapel, and Middletown Christ Reformed Church.

Harold D. and Elizabeth S. Kehne Scholarship Fund

Founded by David A. Kehne and Robert A. Funk for Frederick High School or Governor Thomas Johnson High School graduates pursuing a career in education.

Charles E. Keller, III Accounting Scholarship Fund

Founded by the partners of the former Keller Bruner, now known as RSM, in honor of Mr. Keller's accounting career for accounting majors in their junior or senior year of college.

Mr. and Mrs. Guy E. Kelly Fund

Founded by the Kellys as an unrestricted fund.

Robert E. Kelly Memorial Fund

Founded with proceeds from the Robert E. Kelly Memorial Foundation, Inc. as a donor advised fund, with preference given to ocean-related environmental causes.

Jeanne L. Kemp Fund for Students with Dyslexia

Founded by Nancy and Casper Cline in honor of Mrs. Cline's mother for grants to address the needs of students with dyslexia.

William H. and Jeanne L. Kemp Fund

Founded by Mrs. Kemp to support The Jeanne L. Kemp Fund for Students with Dyslexia.

Bertha J. Kennedy Memorial Endowment Fund

Founded by husband Marvin E. Kennedy, Sr. for Frederick County Historic Sites Consortium.

NEW Key City Rotary Philanthropic Fund

Founded by Key City Rotary to further their philanthropic activities and fulfill its mission of working "to make a meaningful difference in Frederick County."

David Key Memorial Fund for AARCH Society

Founded by Rose Dorsey Chaney with her 2021 Wertheimer Fellow for Excellence in Volunteerism Award for AARCH programs and initiatives.

Jeffrey W. Kight Scholarship Fund

Founded by Roger F. Nicodemus for Frederick County residents, preferably those interested in theater.

Gene and Carolyn King Fund for Mount Airy Emergency Medical Services

Founded through Mrs. King's estate to support Mount Airy Volunteer Fire Department Emergency Medical Services.

Gene and Carolyn King Pine Grove Chapel Endowment Fund

Founded through Mrs. King's estate to support Pine Grove Cemetery in Mount Airy, Maryland.

King Asbury Architectural Scholarship Fund

Founded by BMK Architecture, PC for Frederick, Carroll or Washington County graduating seniors studying architecture or a related design field.

Kirk Family Fund

Founded by George M. and Lois M. Kirk as a donor advised fund. (closed as of 6/30/2025)

Kirkpatrick/Legore Family Fund

Founded by Judith A. Kirkpatrick as a donor advised fund.

Kiwanis Club of Frederick Fund

Founded by the Club for its charitable activities, particularly among Frederick County's children and senior citizens.

NEW Christopher and Lucia Kline Family Charitable Fund

Founded by the Klines to provide grants to nonprofits with programs that address mental health and dyslexia.

Christopher and Lucia Kline Family Fund

Founded by the Klines to provide grants to nonprofits that provide mental health services and programs for dyslexia disorder. (closed as of 6/30/2025)

Knights of Columbus Colonel Thomas F. George Memorial Scholarship Fund

Founded by Thomas F. George, II for students attending St. John's Catholic Prep.

Knights of Columbus Father Michael J. McGivney Scholarship Fund

Founded by Knights of Columbus St. John's Council #1622 in honor of the Knight's founder to support scholarships for Roman Catholic education in Frederick County.

The Ruth Kobe Scholarship Fund

Founded by Ms. Kobe for Maryland residents pursuing a career in medicine, nursing, or social work.

Becky Koontz Memorial Education Scholarship Fund

Founded by William H. and Carolyn R. Koontz for Frederick County residents.

Col. William E. Weber Chapter 142 Korean War Veterans Association of Frederick County, MD, Inc. Scholarship Fund

Founded by the Veterans for students who are direct bloodline descendants of those who served in the U.S. military and who are eligible for Korean War Veterans Association membership.

NEW Lefty Kreh Legacy Fund

Founded by Friends of Lefty Kreh to support students pursuing degrees in biology, wildlife management, fisheries, or ecology studies at post-secondary schools within Maryland.

John and Kathryn Kugler Fund

Founded through the Pauline Draper Fisher Revocable Trust to provide scholarships to Frederick County residents attending Towson University.



Robert C. and Jane E. Ladner Scholarship Fund

Founded by Drs. Ladner for students pursuing studies in science, technology, engineering, or math.

Fernando Laires Piano Fund

Founded by wife Nelita True Laires to support Eastman School of Music at University of Rochester in providing piano performances and recitals by professional artists to inspire its students to pursue their talents.

Fernando Laires and Nelita True Piano Scholarship Fund

Founded through Dr. True's estate provisions for piano students at Eastman School of Music at University of Rochester.

Dan Lajewski Charitable Fund

Founded by Mr. Lajewski as a donor advised fund.

Lisa A. Orndorff Lajewski Memorial Scholarship Fund

Founded by husband Daniel J. Lajewski, preferably for graduates of Brunswick High School or members of All Saints' Episcopal Church.

Robert P. Lapointe Memorial Fund

Founded by wife Catherine Lapointe as a donor advised fund.

Christine LaRoi Memorial Scholarship Fund

Founded by parents Michael and Sheryl LaRoi for Urbana High School graduating seniors majoring in education or performing arts.

Edgar and Mildred Larson Scholarship Fund

Founded by the Larsons for Frederick Community College students, preferably those with learning disabilities.

Laughlin Family Fund

Founded with gifts from The Dr. Henry P. and M. Page Durkee Laughlin Foundation, Inc. to support Advocates for Homeless Families, Community Foundation, Mental Health Association of Frederick County, Frederick Health Hospice, Heartly House, The Food Bank (under Friends for Neighborhood Progress), Frederick Rescue Mission, and Beyond Shelter Frederick for the Alan P. Linton, Jr. Emergency Shelter.

James and Melinda Lautenberger Scholarship Fund

Founded by the Lautenbergers for Frederick County residents pursuing careers in accounting, health care or one of the physical sciences.

Marvin and Bonnie Laws Scholarship Fund

Founded by the Laws for Walkersville High School graduates attending Frederick Community College.

Ron Layman Family Fund

Founded by Ron Layman with his 2019 Wertheimer Fellow for Excellence in Volunteerism Award as a donor advised fund to support Frederick County nonprofits.

Ron Layman Scout Camp Fund

Founded by James B. MacGillivray in Mr. Layman's honor to improve the Walkersville Watershed Property to build a camp for youth programs.

Leader Dogs for the Blind Fund

Founded by Edith Carmack for operational support.



The Harold and Rebecca Shorb Memorial Fund was created by relatives in memory of Harold and Rebecca to provide scholarships for Catoctin High School students pursuing degrees in Fine Arts or closely related visual arts fields.



Gifts to any fund are gladly accepted throughout the year, in any amount.

Richard T. Leberherz Endowment Fund

Founded by Mr. Leberherz's estate to purchase materials for C. Burr Artz Library's Maryland Room.

William O. Lee, Jr. and Family Endowment Fund

Founded by Mr. Lee with his 2003 Wertheimer Fellow for Excellence in Volunteerism Award for preserving Frederick County African American history and scholarships for graduating high school seniors who reside in the City of Frederick.

Jack V. Leishear Endowment Fund #1

Founded by Mr. Leishear as a donor advised fund.

Leishear Family Fund

Founded through The Chester M. Leishear Charitable Remainder Unitrust to support Mountain View Methodist Church.

Clayton Lenhart Memorial Scholarship Fund

Founded by Walkersville FFA Alumni Association for students who were members of the FFA Chapter of Walkersville High School and are attending a two- or four- year college, trade or technical school.

Ralph and Annabelle Lenhart Scholarship Fund

Founded by Mrs. Lenhart for Frederick County residents studying the building trades.

Stephen LeRoux Endowment Fund

Founded by loved ones Emily N. Seifarth and Megan LeRoux in memory of Stephen to support people from underserved or vulnerable populations with legal expenses or legal representation.

David J. and Sara Levine Fund

Founded by the Levines for grants supporting health and wellness initiatives and services to individuals and families experiencing homelessness.

Donald Lewis Community Impact Fund for Advocates for the Aging

Founded through Donald Lewis' estate to support the organization's mission to advocate on behalf of and serve senior citizens' interests in Frederick County.

Donald Lewis Community Impact Fund for Beyond Shelter Frederick

Founded through Donald Lewis' estate to provide emergency financial assistance of shelter, food and healthcare to those in need.

Donald Lewis Community Impact Fund for Frederick Rescue Mission

Founded through Donald Lewis' estate to support the Rescue Mission to serve the homeless and needy in Frederick County.

Donald Lewis Community Impact Fund for Meals on Wheels

Founded through Donald Lewis' estate to provide nutritious food to the homebound who are residents of Frederick County.

Donald Lewis Community Impact Fund for Mission of Mercy

Founded through Donald Lewis' estate to support the organization's mission to provide medical, dental and prescription services for the sick, uninsured and homeless in Frederick County.

Donald Lewis Community Impact Fund for Thurmont High School Alumni Fund

Founded through Donald Lewis' estate to supplement the annual award from The Thurmont High School Alumni Scholarship Fund.

Donald L. Lewis Staff Education Fund for Citizens Care & Rehabilitation Center and Montevue Assisted Living

Founded by Mr. Lewis to provide scholarships to employees pursuing further nursing education.

Kristopher Fielding Lewis Memorial Fund

Founded by parents George and Michele Lewis to support charitable endeavors that embody Kristopher's passion of selfless service.

Liberty Elementary Community School Partnership Endowment Fund

Founded by Liberty Elementary's PTA for reading and media materials.

Laura Yinger Lindley Memorial Fund

Founded by parents Robert and Barbara Yinger for scholarships for graduates of Catoclin High School.

Linganore High School Alumni Scholarship Fund

Founded by the Alumni Association for college scholarships.

Alan Linton, Jr. Scholarship Fund

Founded by parents A. Patrick and Sharon L. Linton for full-time students residing in Frederick County majoring in finance or economics.

Don Linton Fund

Founded by Mr. Linton as a donor advised fund.

Don Linton Family Fund

Founded by Mr. Linton as an unrestricted fund.

Donald C. Linton Fund

Founded by Mr. Linton as a donor advised fund.

M. Rebecca Linton Scholarship Fund

Founded by Mrs. Linton for Frederick Community College students studying accounting and interested in golf.

Patrick and Sharon Linton Family Fund

Founded by the Lintons as a donor advised fund.

Lions of Yellow Springs Fund

Founded by the Yellow Springs chapter of Lions Club International to provide grants to Community Living, Inc., Day Break Adult Day Services, Inc., Leader Dogs for The Blind, Inc., and Lions Club International Foundation.

Davey Long and Mike Compton Memorial Fund

Founded by Gene Long with his 2009 Wertheimer Fellow for Excellence in Volunteerism Award for scholarships and grants.

Joseph B. and Dorothy Long Scholarship Fund

Founded by Mr. Long for Frederick High School or Brunswick High School graduates pursuing a post-secondary education.

Sandra E. Long Memorial Scholarship Fund

Founded by the Frederick County 250th Anniversary Steering Committee for Frederick County residents studying political science or history at Frederick Community College, Hood College and/or Mount Saint Mary's University.

Ann Burnside Love and Thomas A. Love, MD, Family Scholarship Fund

Founded by Mrs. Love in honor and memory of her husband, Thomas A. Love, and the family they created for students pursuing writing careers or students accepted or enrolled at University of Maryland's medical or dental schools.

Barry and Kathleen Lucey Fund

Founded by Mr. Lucey to provide scholarships for students studying agriculture.

Lyons Family Fund

Founded by the Sally Lyons family to provide grants and scholarships.

M Thomas J. and Kathleen A. Madden Scholarship Fund

Founded by J. Brendan Madden in honor of his parents for students pursuing a career in plumbing.

Jeremy Magers Memorial Baseball and Softball Fund

Founded in memory of Jeremy Magers by his fiancé Sarah Hofman to provide grants for baseball and softball in Frederick County.

William J. and Helen I. Mahylis Fund

Founded by Mrs. Mahylis in memory of her husband to provide grants for organizations who assist members of the community with quality-of-life support.

Charles Thomas and Mary Ellen Main Scholarship Fund

Founded through Mrs. Main's bequest for college scholarships.



The Splash Point at Baker Park Fund was created to support the costs of creating Frederick County's first community splash pad. A tribute to Simon Turner, the splash pad will be a vibrant, interactive and ADA-accessible area for families, children and individuals of all abilities.

Mr. and Mrs. Charles V. Main Fund

Founded by the Mains as an unrestricted fund.

Charles V. and Louise D. Main Endowment Fund

Founded through Mr. Main's bequest as an unrestricted fund with special consideration given to grants for Calvary United Methodist Church projects.

Charles V. and Louise D. Main Fund for Community Foundation, YMCA and Calvary United Methodist Church

Founded through Mr. Main's estate provisions for operational support.

Charles V. Main/ Presidents Fund for the Former Jeanne Bussard Center

Founded by the Center's board of directors, now supporting The Arc of Frederick County.

Chief Charles V. Main Scholarship Fund

Founded by friends and family of Chief Main to honor his 90th birthday for Frederick County students majoring in criminal justice.

James W. Main Educational Fund

Founded through Mr. Main's bequest for scholarships for Brunswick High School scholar/athletes.

Make A Difference in Thurmont Fund

Founded by Susan K. Favorite with her 2011 Wertheimer Fellow for Excellence in Volunteerism Award to provide grants and scholarships to residents of Thurmont.

Malamet Family Fund

Founded by Raymond and Susan Malamet to support Frederick County nonprofits working in areas of substance use disorder, including programs for education, prevention and treatment.

Karl S. and Evelyn M. Manwiller Memorial Scholarship Fund

Founded by Mr. and Mrs. Manwiller's family for Frederick County students pursuing a degree in education.

Mary Alice and Richard E. Markey Scholarship Fund

Founded by friends and family to honor Richard and his mother Mary Alice for Frederick County students pursuing a four year degree in education or art.

Markey/Hooper Fund for The Child Advocacy Center of Frederick County

Founded by Richard Markey with his 2004 Wertheimer Fellow for Excellence in Volunteerism Award for operational support for the Center in honor of mother Mary Alice Markey and aunt Betty Hooper.

Marmet Family Fund

Founded by Barbara D. Marmet for scholarships to Frederick County students and grants to Frederick County nonprofits.

David G. Marshall Memorial Scholarship Fund

Founded by his family and Frederick Aviation, Inc., for students pursuing a career in the aviation industry.

Dr. Rex R. and Ann Martin Scholarship Fund

Founded by the Martins for Frederick High School graduates studying at Hood College.

Gifts to any fund are gladly accepted throughout the year, in any amount.





The Jake Baker 27 Fund was established by James and Karen Baker in loving memory of their son to support organizations and programs that raise awareness about mental health and suicide prevention.

Martz Youth Baseball Fund

Founded in memory of Franklin Martz by his family and friends for grants to youth baseball to honor Mr. Martz' love of baseball and his lifelong dedication to coaching young players.

Maryland FFA Foundation Endowment Fund

Founded by Bess and Frank Gladhill and Clyde and Kitty Crum for operational support.

Maryland Master Farmers Scholarship Fund

Founded by Master Farmers De Willard, Rodman Myers, Frank Gladhill, and Mehrle Ramsburg for Maryland students pursuing a career in agriculture.

Mick and Sandy Mastrino Memorial Scholarship Fund

Founded through Mrs. Mastrino's estate provisions for graduates of Frederick High School.

Max Well for Life Fund

Founded by Wes Tyeryar in memory of son Maxwell to support the mental health needs of veterans and their immediate family.

McCardell Family Scholarship Fund

Founded by Adrian L. McCardell, Jr. and Robert C. McCardell for Frederick County residents attending Hood College or Washington and Lee University.

SSGT Michael McCauley Foundation Fund

Founded by parents J. Scott McCauley and Debra Lawrence to provide grants and scholarships.

Nathan G. McDaniel Fund for The Animal Welfare League of Frederick County

Founded by Animal Welfare League for operational support.

Carolyn D. McGolerick Scholarship Fund

Founded through Ms. McGolerick's estate for students studying library science.

McGowan-Davisson Fund

Founded by the Davissons as a donor advised fund.

McSherry Family/Woodsboro Bank Scholarship Fund

Founded by Woodsboro Bank to honor James McSherry's 49 years of bank service for tuition assistance to St. John Regional Catholic School students.

Kathy J. Meagher Memorial Scholarship Fund

Founded by husband Rick Meagher and children Kathryn, Emily and Matthew for area students affected by cancer.

Meals and More Fund

Founded by David L. and Kathryn D. Schey as a donor advised fund.

Memarsadeghi Family Fund

Founded by the Memarsadeghi family as a donor advised fund.

Mental Health Association of Frederick County Fund

Founded by its board of directors to fund programs of the organization.

Merit Scholarship Field of Interest Fund

Founded by the Community Foundation to provide scholarships based solely on academic excellence, not on financial need.

George M. and Gloria E. Merriman Scholarship Fund for Brunswick High School

Founded by The Merriman Family Foundation for Brunswick High baseball or softball athletes to attend college.

Frederick J. Metheny Memorial Endowment Fund

Founded by wife H. Arlene Metheny for American Heart Association activities in Frederick County.

NEW Micah 6:8 Fund

Founded by Daniel Davis, MD and Rev. Suzanne Adele Schmidt, Ph.D. to support various nonprofit organizations.

Janet L. Michael Fund

Founded by Mrs. Michael to provide grants to Salvation Army, The Weinberg Center for the Arts, Maryland Room of the C. Burr Artz Library, and The Spires Brass Band, Inc.

Trail Mathias Michel Fund

Founded by Theresa M. Michel as a donor advised fund.

Middletown Valley Trails Fund

Founded by Tod P. and Barry K. Salisbury as a donor advised fund for grants to purchase land and construct trails in the Middletown Valley area for community members to utilize.

David and Norma Miller Scholarship Fund

Founded by the Millers for students pursuing certification programs or degrees in nursing or agricultural education.

Elinor Miller Scholarship Fund for Banner School

Founded by its board of directors for student financial aid.

Robert and Ann Miller Family Fund

Founded by Mrs. Miller as a donor advised fund.

Erin Christine Moberly Memorial Fund

Founded by Kevin and Nicolette Moberly in memory of their daughter for grants to support individuals born with special needs.

Robert and Ardeth Moler Family Fund

Founded by the Molers as a donor advised fund.

Monocacy Foundation Developmental Disabilities/ Doris Remsberg Fund

Founded by brother Tommy Dorsey and the Monocacy Foundation for grants for persons with developmental disabilities.

Charlotte A. Moran Memorial Endowment Fund

Founded by Ms. Moran with life insurance to support activities at the discretion of the Community Foundation.

Morgan-Keller, Inc., Endowment Fund

Founded by Morgan-Keller as a donor advised fund.

Mary Ann Moschel Memorial Scholarship Fund

Founded by Robert Moschel with the Frederick County Association of Counseling and Development for Frederick County graduating seniors majoring in counseling, psychology, education, or human services.

Leon and Betty Moser Family Fund

Founded by Mr. and Mrs. Moser and their daughters Linda Moser and Shirley Barker to support Pleasant View Church of the Brethren.

Linda C. Moser Memorial Fund

Founded by Shirley Barker in memory of her sister to support New Hope United Methodist Church.

Robert C. and Winifred A. Mount Memorial Scholarship Fund

Founded through Robert Mount's estate for students attending any two- or four- year college, trade and technical school or post-graduate program.



The Deaf Fellowship Fund was founded by an anonymous donor to provide funding for the Deaf Fellowship ministry at the Frederick Church of the Brethren.

Mount Hope Cemetery Maintenance Fund

Founded by its board of trustees for ongoing preservation.

John C. and Elaine H. Munson Memorial Fund

Founded through Dr. Munson's bequest as an unrestricted fund.

Jessica Lee Murphy Memorial Fund

Founded by parents Don and Sue Murphy and brother Brad Murphy as a donor advised fund.

Calvin M. Murray Charitable Fund

Founded with proceeds from Mr. Murray's estate to support Frederick Health Hospital and The Howard Chapel Ridgeville United Methodist Church.

NEW Fran Murray Scholarship Fund

Founded by her sons in their mother's memory to provide scholarships to students who have been members of the livestock programs of the Howard County (Maryland) 4-H Program.

Ryan Patrick Murray Memorial Fund

Founded by parents Steven P. and Mary Rebecca Murray for grants to youth, high school and college baseball programs, and scholarships to Frederick County graduating seniors who played varsity baseball and softball.

Tyler Dane Murray Scholarship Fund

Founded by parents Wayson and Renee Murray for Urbana High School graduating seniors pursuing a post-secondary education.

Music for All Students Endowment Fund

Founded by Frederick Department of Special Events and Frederick County Public Schools for musical instruments for interested students.

Charles F. and Helen A. Myers Endowment Fund

Founded by Mr. Myers to support The Catocin High School Youth Fund and Shriner's Hospital.

C. Rodman and M. Jean Ogle Myers Fund

Founded by Mr. and Mrs. Myers for grants, with preference given to the Frederick County 4-H Therapeutic Riding Program and Maryland FFA Foundation, Inc.

Margaret E. Myers Memorial Endowment Fund

Founded by Ms. Myers' planned gift for Evangelical Reformed United Church of Christ and Historical Society of Frederick County.

Myersville Lions Club Scholarship Fund

Founded through John C. Summers' trust for Washington County and Frederick County students studying medicine or health care.



Nancy's Charitable Fund

Founded by the Doll family to support the Community Foundation's discretionary grantmaking.

Natelli Communities Charitable Fund

Founded by Natelli Communities, LLC to support the greatest needs of Frederick County.

Anthony M. Natelli Memorial Scholarship Fund

Founded by Natelli Communities for Urbana High School graduates exhibiting dedication to volunteerism.

National Alliance on Mental Illness (NAMI) of Frederick County Fund

Founded by Fran Wenner with her 2010 Wertheimer Fellow for Excellence in Volunteerism Award for operational support.

Wayne C. Neely and Margaret S. Neely Fund

Founded through the Neely's estate provisions as an unrestricted fund.



Gifts to any fund are gladly accepted throughout the year, in any amount.

Wayne C. Neely and Margaret S. Neely Frederick Scholarship Fund

Founded through Mrs. Neely's estate provisions for Frederick County graduates with preference to sociology or chemistry majors.

Margaret and Wayne Neely Fund of the Rotary Club of Frederick, Maryland

Founded by Mrs. Neely to support Paul Harris fellowships.

New Market District Lions Club Community Service Fund

Founded by the Lions for grants, community projects and scholarships.
(closed as of 6/30/2025)

Parsons Newman Memorial Fund

Founded by Mr. and Mrs. John D. Hendrickson II for grants to Heritage Frederick to host historical lectures in Mr. Newman's name.

Mr. and Mrs. Charles A. Nicodemus Family Fund

Founded by Mr. and Mrs. Nicodemus as a donor advised fund.

Charles A. and Kathryn Z. Nicodemus Scholarship Fund

Founded by Mr. and Mrs. Nicodemus for Walkersville High School graduating seniors attending Hood College.

Charles A. Nicodemus Youth Fund

Founded through Mr. Nicodemus' trust to support nonprofit organizations that offer youth programs in Walkersville, Maryland.

Descendants of the Dr. John D. and Rebecca Nicodemus Family Fund

Founded by the family to support Walkersville United Methodist Church.

Roger F. Nicodemus Theatre Scholarship Fund

Founded by Mr. Nicodemus for Frederick County residents interested in theater.

Edwin F. Nikirk Family Fund

Founded by Mr. Nikirk as an unrestricted fund.

E. Ruth Nikirk Scholarship Fund

Founded by F. Martin Nikirk and Sharon Ann Hartsock in honor of their mother for college freshmen or sophomores pursuing a career in business or computer technology.

Nonprofit Support Field of Interest Fund

Founded by the Community Foundation to support nonprofit infrastructure/capacity building.

Addie B. Null Health Care Fund

Founded by Ms. Null to support health and wellness programs in Frederick County, with preference to Way Station, Inc.



Linwood T. and Helen Offutt Educational Fund

Founded by the Offutts for scholarships for Friends of Catholic Education and Mount Saint Mary's University.

Linwood T. Offutt, Jr. Fund for The Frederick County 4-H Camp Center

Founded through Mr. Offutt's bequest to support the programs of Frederick County 4-H Camp and Activities Center, Inc.



The Michael A. Hombach Scholarship Fund was established by his family in memory of his life and service, to award scholarships to graduating seniors from Urbana High School or Walkersville High School who plan to study education, social work or behavioral health.

W. Jerome Offutt Family Fund

Founded by Mr. and Mrs. Offutt as an unrestricted fund.

W. Jerome Offutt/ Goodwill Fund

Founded by Goodwill Industries Monocacy Valley, Inc. to support its clients and programs.

Dr. Harding W. Olson Patient Aid Fund

Founded by his family for prescriptions for Frederick County Health Department Behavioral Health Services clients.

Our Lady of Mount Carmel Church Fund

Founded by Matt and Sandy Wiley to support the church cemetery, maintenance, and operations.

Luster and Jean Oxley Scholarship Fund

Founded by Mrs. Oxley for Frederick County Public Schools graduates to attend a two- or four-year college in Maryland, preferably strong "B" students.

Nellie C. Page Fund

Founded through Mrs. Page's bequest to support Carroll Manor Fire and Rescue Company.

Robert and Jenilie Palla Charitable Fund

Founded by the Pallas for grants to nonprofit organizations.

Holly Hale Palmer Memorial Fund

Founded by mother Elizabeth K. Hale as a donor advised fund to provide grants to nonprofits providing mental health services to persons with seizure and bipolar disorders, with special emphasis on providing service dogs.

Kenneth W. Parker-Class of '55 Scholarship Fund

Founded with gifts from Lincoln High Class of '55 and Fredericktonian Lodge #12 F&AM-PHA in honor of Mr. Parker for Frederick County graduating seniors, with preference to students attending a historically black college or university or attending Frederick Community College.

Parks Field of Interest Fund

Founded by the Community Foundation to support enhancements to public parks.

Frank R. Parsons Fund for the National Museum of Civil War Medicine

Founded by Mr. Parsons with his 2009 Wertheimer Fellow for Excellence in Volunteerism Award to support the National Museum of Civil War Medicine.

Partners in Care Fund

Founded by Grace and Edna Smith with their 2007 Wertheimer Fellow for Excellence in Volunteerism Award for operational support.

Nicholas Talarico Paskowsky Memorial Fund

Founded by parents Jane Talarico and Michael Paskowsky for scholarships for Saint Mary's College students studying abroad.

Patriot Technologies, Inc. Charitable Fund

Founded by Patriot Technologies for grants to nonprofits, with preference given to those serving the residents of Frederick County.
(closed as of 6/30/2025)

Jennie Sue Pearson Scholarship Fund

Founded by Ms. Pearson with her 2011 Wertheimer Fellow for Excellence in Volunteerism Award for students attending Frederick Community College.

Pease Baseball Family Fund

Founded by the Pease family to raise awareness about juvenile diabetes and to support various community programs.

Performing Arts Field of Interest Fund

Founded by the Community Foundation to support dance, musical, theatrical and live performances for organizations and lessons for individuals.

Persons with Disabilities Field of Interest Fund

Founded by the Community Foundation to assist nonprofits serving persons with developmental or physical disabilities.

Garrett R. Petronchak Memorial Fund

Founded by mother Peggy Waxter as a donor advised fund, with preference for supporting programs related to the enforcement of underage drinking laws, driving under the influence and substance use disorder.

NEW Nelson and Marjorie Murphy Pittinger Scholarship Fund

Founded by Nelson Pittinger to honor his late wife's wishes to support Frederick County students pursuing a career in education at Frederick Community College.

Peter H. and Lorraine Plamondon Fund

Founded by the Plamondons as an unrestricted fund.

Platoon 22 Charitable Fund

Founded by Platoon 22, Inc. to support local nonprofit organizations providing services to veterans of any branch of the United States Military.
(closed as of 6/30/2025)

Walter W. and Catharine Prentiss Plummer Endowment Fund

Founded by Col. and Mrs. Plummer to support The Chesapeake Bay Foundation, The Potomac Conservancy, and Guide Dog Foundation for the Blind.

PNC Homeownership Assistance Fund

Founded by its board of directors to support low and moderate-income homebuyers in Frederick County.

Point of Rocks Library Fund

Founded by Frederick County Public Libraries board of directors to support library programs.

Point of Rocks Ruritan Community Service Fund

Founded by the Ruritans for community service projects.

John L. and Lucille H. Ponton Charitable Fund

Founded through Mrs. Ponton's estate provisions to provide funds for families of children with cancer and to support Camp Jamie.

John L. and Lucille H. Ponton Endowment Fund

Founded by Mrs. Ponton as an unrestricted fund.

Ada B. Poole Scholarship Fund

Founded by an anonymous donor and former student of Mrs. Poole's for Walkersville High School graduating seniors pursuing a degree in English, literature or teaching.

Lawrence M. and Betty Agatha Powell Scholarship Fund

Founded by Mrs. Powell for Governor Thomas Johnson High School graduating seniors, preferably scholar/athletes.

Preparing for an Aging Population Strategic Initiatives Fund

Founded by the Community Foundation to address preparing Frederick County for an aging population, focusing on the welfare of its seniors.

Preservation and Enhancement Fund of Mt. Olivet Cemetery, Inc.

Founded by Mt. Olivet's board of directors to assist in the conservation of the natural beauty and historic integrity of Mount Olivet Cemetery.

William B. Price, Jr. Scholarship Fund

Founded by Bill and Lynne Price for Frederick High School graduating seniors, preferably members of the boys' cross-country team.

Joseph, Caroline, and Carole Lynne Price Scholarship Fund

Founded by Caroline and Carole Lynne Price for students attending McDaniel College.

Pritchett Family Foundation Fund

Founded by Jerry and Molly Pritchett to provide grants supporting programs for children with physical disabilities and/or children with financial need.

Gifts to any fund are gladly accepted throughout the year, in any amount.



Project Christine Fund

Founded by parents Susan and Dan Tipsord to provide grieving parents with the resources they need to help their surviving children cope with the loss of a sibling.

Rev. Dr. Rodney B. Pulliam and Rodney II, Jordan, and Matthew Pulliam Memorial Fund

Founded by wife and mother Tammie Armstead Pulliam with memorial contributions for grants and scholarships, preferably in support of males ages 5 to 40.

Q-R**Quantum Frederick Scholarship Fund**

Founded by Quantum Loophole, Inc. for students pursuing careers in technology, engineering, or computer science.

Mary A. "Mais" Quill Endowment Fund for the C. Burr Artz Library

Founded by her family for the C. Burr Artz Library to purchase materials for loan to library patrons.

Alvin Quinn Scholarship Fund for Youth

Founded by James Filby and Debbie Williams for tuition assistance for youth ages 5 to 22 to participate in Frederick YMCA programs.

Albert Atlee and Elizabeth Lane Radcliffe Memorial Scholarship Fund

Founded by family members for graduates of Frederick High School.

Judy Ramsburg Memorial Scholarship Fund

Founded by parents Mehrle and Thelma Ramsburg for Frederick County public high school graduates to attend Frederick Community College.

Kaye E. Ramsburg Memorial Fund

Founded by mother Mary Alice Ramsburg and sister Sharon Gregory to support Literacy Council of Frederick County.

Randall Charitable Trust Donor Advised Fund

Founded by Frances Ann Randall and Ruth Ann Randall, trustees of the Randall Charitable Trust, as a donor advised fund.

Randall Family's Gift to the Maryland Room

Founded by the Randall family to purchase, acquire and maintain materials and equipment for C. Burr Artz Library Maryland Room.

Frances Delaplaine Randall Endowment Fund for Historic Research of Frederick County

Founded by Mrs. Randall for research of Frederick County through Historical Society of Frederick County and C. Burr Artz Library Maryland Room.

George E. Randall Memorial Scholarship Fund

Founded by wife Elizabeth Randall for Frederick County residents studying journalism and/or photography, preferably Catocin High School graduates attending Frederick Community College.

Mr. and Mrs. Myron W. Randall Fund

Founded by the Randalls as an unrestricted fund.

Nancy Deyle Randall and Myron W. Randall Jr. Fund

Founded by Mr. and Mrs. Randall as a donor advised fund.

Robert E. Randall Memorial Endowment Fund

Founded by parents Mr. and Mrs. George Randall for scholarships for elementary school children at the Delaplaine Visual Arts Center.

Ruth Ann Randall and James Edwin Smith Fund

Founded by Frances A. Randall as a wedding gift to her daughter and son-in-law to support charitable activities recommended by the couple.

Philip Rauh Family Endowment Fund

Founded by the Rauhs as a donor advised fund.

Phil and Erika Rauh Fund

Founded by the Rauhs to support services and programs related to the needs of children in the Frederick County area.

Recreation Field of Interest Fund

Founded by the Community Foundation to support play areas, sporting events, festivals and teams/leagues.

Kathryn "Kitty" M. Reed and Robert "Bob" J. Reed Scholarship Fund

Founded through Mrs. Reed's estate for students majoring in business administration with preference given to students with financial need.

Jeanie Keller Reeder Endowment Fund

Founded through Ms. Reeder's charitable remainder trust to support Heartly House, Inc. and Salvation Army.

NEW Jeanie Keller Reeder Family Rescue Fund

Founded by Mrs. Reeder to support the Frederick Rescue Mission.

Refugee Support Fund

Founded by Covenant Capital, LLC to support nonprofit organizations that provide services for refugee programs.

Richard and Betsy Reinders Charitable Fund

Founded by the Reinders to provide grants to nonprofits.

Remsberg Family Fund

Founded by Adrian McCardell Remsberg, Jr., and Lisa Nelson Remsberg to support grants to nonprofits providing health care, including mental and behavioral health services, in Frederick County.

Colleen M. Remsberg Memorial Fund

Founded through Mrs. Remsberg's estate to support The Mount Olivet Preservation and Enhancement Fund, Historical Society of Frederick County, Evangelical Lutheran Church, and The Delaplaine Visual Arts Center.

Ramona C. Remsberg Fund for Heartly House

Founded by Heartly House through Mrs. Remsberg's bequest to support its activities. *(closed as of 6/30/2025)*

Ramona Corun Remsberg Scholarship Fund

Founded through Mrs. Remsberg's estate provisions for Frederick County residents, preferably those pursuing finance careers.

Responding to Substance Use Disorder Strategic Initiatives Fund

Founded by the Community Foundation to address the response of Frederick County to substance use disorder (SUD) by focusing on new and expanded resources to those with SUD.

Donald B. Rice Memorial Scholarship Fund at Saint John's Catholic Prep

Founded by wife Mary Rice and her children for students to attend St. John's Catholic Prep.

Millard Milburn Rice and Mabel Long Rice Family Trust

Founded through the Rices' charitable trust as an unrestricted fund.

Rice Tire Employee Hardship Fund

Founded by Rice Tire Company leadership for employees and their families faced with financial difficulties due to catastrophic loss or unforeseen medical expenses.

Barry D. Richardson Memorial Scholarship Fund for the Visual Arts

Founded by wife Shirley Richardson and daughter Katie for Frederick County residents attending Frederick Community College, preferably those pursuing a visual arts career.

Don and Rosa Rippeon Scholarship Fund

Founded by the Rippeons for Frederick County graduates, preferably early childhood education and agriculture majors.

Mae Retha M. Rippeon and Vernon R. Rippeon Scholarship Fund

Founded by Mr. Rippeon in memory of his wife, Mae Retha, for students pursuing a nursing degree.



The Lefty Kreh Legacy Fund was established by Friends of Lefty Kreh, formerly known as Fly Fishers International, Inc., to provide scholarships to students in Maryland pursuing degrees in biology, wildlife management, fisheries, or ecology.

Shirley Barnes Rippeon and Vernon Robert Rippeon Fund

Founded by Mr. Rippeon to support Hoover Library at McDaniel College. *(closed as of 6/30/2025)*

Vernon "Rick" Rippeon Memorial Fund

Founded by Mr. Rippeon in memory of his son, Rick, to support Scouting America Troup 735.

M. Robert Ritchie Endowment Fund for Heartly House's Youth Programs

Founded by Mr. Ritchie for child abuse prevention programs, emergency shelter, community education, and counseling for children under 18.

M. Robert Ritchie, Jr., Charitable Gift Fund

Founded through Mr. Ritchie's estate provisions to benefit YMCA of Frederick County.

Juana Delgado Rivas Fund for Centro Hispano de Frederick, Inc.

Founded by Jeanie R. Cronin with her 2010 Wertheimer Fellow for Excellence in Volunteerism Award to support Centro Hispano De Frederick, Inc.

Viola Marie Robinson Give Them Wings Fund

Founded by Jean and John Brunk in memory of Mrs. Brunk's mother to foster independence and enhance the quality of life of Frederick County senior citizens.

Nancy Roblin Fund for The Frederick Choral

Founded by Ms. Roblin with her 2012 Wertheimer Fellow for Excellence in Volunteerism Award to provide support for The Frederick Choral.

Winfield Scott Rodney, IV, Memorial Scholarship Fund

Founded by mother Sonja Sperlich for Frederick County residents, specifically to help individuals in becoming self-sufficient despite any disabilities or obstacles.

Priscilla J. and William G. Roessler Charitable Youth Fund

Founded by James Roessler in memory of his parents for scholarships to youth in Frederick County for participation in educational and art programs.

Clyde and Olga Roney Fund

Founded by their five children to support Advocates for Homeless Families, All Saints Episcopal Church, and Rotary Club of Frederick, specifically to honor veterans.

Naomi A. and Walter L. Roney Memorial Fund

Founded by Mr. Roney to support and honor veterans.

Rosebud Frederick Senior Support Fund

Founded by Rose Marie Willard Myers as a field of interest fund to support the needs of senior citizens in Frederick County.



Gifts to any fund are gladly accepted throughout the year, in any amount.

Rose Hill Manor Children's Museum Preservation and Education Fund

Founded by its council to support Rose Hill as a historical landmark and educational facility focusing on Frederick County's heritage.

Rosensteel Family Fund

Founded by Pat Rosensteel with her 2023 Wertheimer Fellow for Excellence in Volunteerism Award to support women and children with basic needs.

Melissa D. and Norman K. Ross Family Fund

Founded by Mr. and Mrs. Ross for grants to nonprofits and scholarships to deserving students in the Frederick County area.

Rotary Club of Carroll Creek Pass Through Fund

Founded by its board of directors for community projects.

Rotary Club of Frederick Endowment Fund

Founded by its board of directors for scholarships and programs.

Rotary Club of Frederick First Century Trust Fund

Founded by its board of directors for scholarships and community service projects.

Rotary Club of Frederick/W. Meredith S. Young and Helen B. Young Scholarship Fund

Founded by its board of directors for Frederick County residents pursuing a post-secondary education in the United States.

Rotary Club of Fredericktowne Fund

Founded by its board of directors for scholarships to Frederick County students and grants to Frederick County nonprofits.

Rotary Endowment Fund for Youth of Frederick County

Founded by Rotary Club of Frederick with an anonymous gift for youth and character-building programs.

Routzahn Business Scholarship Fund

Founded by Mr. and Mrs. Allen R. Routzahn for Frederick Community College scholarships.



The Jeanie Keller Reeder Family Rescue Fund was established by Mrs. Reeder to ensure the Rescue Mission has the resources it needs to help people now and for generations to come—because supporting this work is deeply important to her and her family.

Leslie Ruby and Howard Looney Community Fund

Founded by Leslie Ruby with her 2016 Wertheimer Fellow in Excellence in Volunteerism Award to support a variety of projects in the Frederick County community.

Robert Ryals Memorial Endowment Fund

Founded by mother Gloria Ryals for mental health services.

Murray D. Ryan Scholarship Fund

Founded by the Mount Airy Lions Club for graduating seniors from Linganore, South Carroll, and Glenelg High Schools, or residents of Frederick, Carroll and Howard Counties within the Mount Airy zip code.



St. Katharine Drexel Scholarship Fund

Founded by St. Katharine Drexel Church for students with academic merit or financial need.

St. Nicholas Children's Scholarship Fund

Founded through Dr. John C. George's charitable trust for college bound students from Frederick County with preference to minority students and students with financial need.

Saylor-Powell Scholarship Fund

Founded by Charles and Joan Powell for students attending any accredited post-secondary educational institution in the State of Maryland; or Gettysburg College or the United Lutheran Seminary at Gettysburg, both located in Gettysburg, Pennsylvania, with a preference for graduates of Frederick High School or Walkersville High School.

Dr. Harold and Anna Lee Schaden Memorial Fund

Founded by the Schaden family as a donor advised fund.

Scher Family Fund

Founded by Shari Ostrow Scher with her 2020 Wertheimer Fellow for Excellence in Volunteerism Award to support Children of Incarcerated Parents Partnership.

Donald G. and Helen W. Schley Fund

Founded by Mrs. Schley for scholarships for Frederick County Public School graduates who are/were members of National Honor Society.

James A. and Carmen B. Schmersahl Charitable Fund

Founded by Mr. and Mrs. Schmersahl as a donor advised fund.

Michael Schrodel Memorial Scholarship Fund

Founded by parents David and Diana Schrodel for Walkersville High School graduating seniors, preferably football players.

J. Howard, Mary R., and Leah C. Schroyer Fund

Founded through Leah Schroyer's estate provisions to support programs to aid individuals with disabilities.

Scott Key Center Fund

Founded by its board of directors for operational support.

Secret Santa Fund

Founded by Donald C. Linton to provide grants to residents of Frederick County who have special situations in which a small grant would make a difference.

ILT Robert A. Seidel III Memorial Scholarship Fund

Founded by parents Robert and Sandra Seidel for Catoctin High School graduating seniors.

ILT Rob Seidel Wounded Soldiers Fund

Founded by parents Robert and Sandra Seidel for direct services to military veterans of the War on Terrorism.

Betty Seligmann Literacy Endowment Fund

Founded by Literacy Council of Frederick County in memory of its former Board President for operational support.

Senior Resources Center at Spring Bank Fund

Founded by Supporting Older Adults through Resources, Inc. for the renovation and expenses for the Senior Resource Center at Spring Bank.



The Elaine Junker Hospice Enrichment Fund was founded by Elaine Junker with her 2024 Wertheimer Fellow for Excellence in Volunteerism Award to support Frederick Health Hospice as it provides care and comfort to patients and their families.

Ron and Kay Shafer Memorial Scholarship Fund

Founded by Linton Shafer Warfield & Garrett, P.A. for Frederick County Public Schools graduating seniors attending Frederick Community College.

C. Eugene Shaff, Jr. Memorial Scholarship Fund

Founded by wife Laura Jean Shaff for Frederick County Public Schools graduates majoring in a scientific field and attending an accredited college or university located in Maryland.

Robert and Carol Sharpe Fund

Founded by the Sharpes to support Frederick County Agricultural Society, American Legion Post 11, Lions Club of Frederick, Frederick High School Alumni Association, North End Civic Association and grants for animal care.

Alma Crebs Sharrer Scholarship Fund

Founded through Mrs. Sharrer's estate provisions for Frederick High School graduates who attended South Frederick/Lincoln Elementary School.

Michelle Shearer STEM Fund

Founded by Leidos Biomedical Research, Inc. to honor Michelle Shearer, the 61st National Teacher of the Year and Frederick County Public Schools teacher, for scholarships to Frederick County Public Schools graduating seniors planning careers in science, technology, engineering or mathematics.

Coach Bob Sheffler/Middletown High School Soccer Alumni Scholarship Fund

Founded by the Middletown High School soccer program alumni for Middletown High School graduating seniors who played varsity soccer during their senior year.

Sheppard Pratt Endowment Fund for Charitable Mental Health Services

Founded by Hahn Transportation for operational support.

Kay F. and Douglas K. Sheiss Fund

Founded by Mrs. Sheiss in memory of her husband as an unrestricted fund to support the greatest needs of the community.

General Clair Wayne Shisler Fund

Founded with General Shisler's bequest as an unrestricted fund.

H. Reese and Jeannette K. Shoemaker Charitable Fund

Founded by Mrs. Shoemaker in memory of her late husband to support Frederick County Animal Control and the Alzheimer's Association, Western Maryland Regional Office.

James R. and Tamara L. Shoemaker Charitable Fund

Founded by the Shoemakers for grants to support basic human needs, animal well-being or mental health.

NEW Harold and Rebecca Shorb Memorial Fund

Founded by family members to support Catoctin High School students pursuing degrees in fine arts or closely related visual arts fields.

Shirley Shores Scholarship Fund

Founded by Mrs. Shores and son Jeff for graduating Brunswick High School seniors.

F. Lawrence Silbernagel, Jr. Trustee's Administrative Endowment Fund

Founded through Mr. Silbernagel's charitable remainder trust to support the Community Foundation's operating budget and initiatives.

F. Lawrence and Shirley J. Silbernagel Endowment Fund

Founded by the Silbernagels as an unrestricted fund.



Gifts to any fund are gladly accepted throughout the year, in any amount.

F. Lawrence and Shirley J. Silbernagel-Hood College Scholarship Fund

Founded by the Silbernagels for scholarships.

Larry and Shirley Silbernagel Endowment Fund

Founded through Mr. Silbernagel's charitable remainder trust to support Calvary United Methodist Church.

William A. Simmons Scholarship Fund

Founded by Mr. Simmons for Frederick County residents pursuing a career in graphic arts, printing, publishing, advertising and/or marketing. (closed as of 6/30/2025)

Simpson Family Fund

Founded by Randall Simpson, along with his daughter Saige, as a donor advised fund.

Margaretta F. Slayman Memorial Endowment Fund

Founded by the Community Foundation with Mrs. Slayman's bequest for operational support.

Gail K. Slezak Vocal Music Scholarship Fund

Founded by John and Gail Slezak for students majoring in music with a focus on vocal performance.

John J. Slezak Instrumental Scholarship Fund

Founded by John and Gail Slezak for students pursuing music education with a focus on instrumental performance.

Curtis Mason Smith Memorial Fund

Founded by Zachary and Samantha Smith in memory of their son to support programs at Frederick County Career and Technology Center.

Sgt. David J. Smith Veterans Relief Fund

Founded by family members to support temporary assistance to veterans in Frederick County.

Sgt. David J. Smith Memorial Fund

Founded by family members for Frederick High School alumni and grants to nonprofits.

Dawn Renee Smith Memorial Scholarship Fund

Founded by grandparents Charles and Jane Smith for graduates of Frederick County Public Schools, with preference given to Brunswick High School graduates pursuing a degree in marketing or a related field.

Dr. George and Carolyn Smith Fund

Founded by the Smiths to provide scholarships to those pursuing careers in a variety of health care fields, and grants to Friends of Baker Park.

Helen L. Smith Scholarship Fund for Children and the Arts

Founded by the Community Foundation for art instruction for elementary school children.

Mary E. M. and Ruth E. Smith Scholarship Fund

Founded with bequests from the Smith sisters for Frederick County residents.

Ross and Pauline Smith Scholarship Fund

Founded by Mrs. Smith for Frederick County residents pursuing a college education.

Beatrice R. Snyder Scholarship Fund

Founded by daughter Charlotte Hott for Middletown High School seniors studying education or music.

Charles L. Snyder Family Endowment Fund

Founded by the Snyders as a donor advised fund.

Charles L. and Elizabeth H. Snyder Fund for Frederick Health Hospital

Founded by the Hospital to honor the Snyders' volunteer service.

Linda M. Snyder Memorial Fund

Founded by husband Tom Snyder and daughter Lindsay Stein to provide grants to nonprofits and scholarships to students majoring in education.

Michael C. Snyder Memorial Fund

Founded by parents Mary and David Snyder for grants and scholarships, preferably to students exhibiting financial need and to nonprofits working in the visual arts, children's services and environmental conservation.

Spires Brass Band Endowment Fund

Founded by John J. and Gail K. Slezak for operational support.

NEW Splash Point at Baker Park Fund

Founded by community volunteers to support the creation of Frederick County's first ADA-accessible splash pad.

Lois B. Noffsinger Spurrier Fund

Founded through Ms. Spurrier's estate provisions for students attending preschool at Good Shepherd Lutheran Church and for maintenance of the Schaeffer Center at Evangelical Lutheran Church.

David and Kay Stauffer Family Fund

Founded by the Stauffers as a donor advised fund.

Margaret S. Stauffer Fund

Founded through Mrs. Stauffer's estate provisions for youth activities in Frederick County.



The Dr. J. Elmer Harp Scholarship Fund was established by The Dr. J. Elmer Harp Medical Center, Inc. to support students residing in the Middletown Valley who plan to pursue a degree in a healthcare-related field.

Alice Jean Stine Fund

Founded by Ms. Stine for grants to organizations that benefit cats in Frederick County and printed books for Valley Elementary School and Brunswick Elementary School.

Julia Eleanor Dryden Stine/Hitchens-Dryden Memorial Scholarship Fund

Founded by daughter Alice Jean Stine for Frederick County Public School graduates studying at Salisbury University.

Paul Luther Stine, Jr. Memorial Fund

Founded by sister Alice Jean Stine for grants to nonprofit organizations providing for the rescue and well-being of horses.

Paul Luther Stine, Sr. Memorial Fund

Founded by daughter Alice Jean Stine for grants to February Star Sanctuary and prevention of animal euthanasia.

Richard H. and Nancy J. Stine Endowment Fund

Founded by Mr. and Mrs. Stine through estate provisions to support Locust Grove Church of the Brethren in Mount Airy.

Norman William Stitley Scholarship Fund

Founded through Mr. Stitley's trust for students studying agriculture science or playing baseball.

Florence E. Stoner McDaniel College Scholarship Fund

Founded with a bequest from husband Frank G. Stoner for McDaniel College students.

Sperry L. Storm Memorial Scholarship Fund

Founded with the dissolution of The Sperry L. Storm Memorial Scholarship Fund, Inc. for private music scholarships for Frederick County Public Schools students in kindergarten through 11th grade.

Strategic Initiatives Endowment Fund

Founded to support the Strategic Initiatives of the Community Foundation, which supports Frederick County area charitable organizations.

Strategic Initiatives Pass Through Fund

Founded to support the Strategic Initiatives of the Community Foundation, which supports Frederick County, area charitable organizations.

Charles C. T. Stull, Sr. Memorial Scholarship Fund

Founded by wife Mary M. Stull and her children, preferably for those studying music.

Mary Alice and R. David Stup Scholarship Fund

Founded with Mary Alice Stup's bequest to provide a second chance for abused or exploited children.

Robert and Lorraine Stup Fund

Founded through Lorraine Stup's estate provisions for nonprofit organizations providing emergency services to individuals and families.

Todd J. Stush Memorial Scholarship Fund

Founded by father John Stush for Frederick County graduating seniors with financial need, with preference given to applicants who participated in Scouting America or Girl Scouts of the USA.

Substance Use Disorder Treatment for Frederick County Youth Fund

Founded by Elizabeth Richards as a field of interest fund.

John C. Summers Fund

Founded through Mr. Summers' trust as a field of interest fund to benefit the citizens of Myersville.

Klare S. Sunderland Fund

Founded by Mr. Sunderland as an unrestricted fund.

Supporting Families with Children Strategic Initiatives Fund

Founded by the Community Foundation for grants to address the needs of Frederick County families with children, with focus on making Frederick County a great place to raise families.

Jerry Addington Sweeney II Memorial Fund

Founded by his family for grants to Frederick Community College.

Symphonic Arts Endowment Fund

Founded by concerned citizens to support Frederick Regional Youth Orchestra, Baltimore Symphony Orchestra in Frederick and Frederick Orchestra.



Roger Brooke Taney House Endowment Fund

Founded by Helen Delaplaine to preserve the memory of Mr. Taney's life in Frederick or preserve other buildings of historical significance.

James and Theresa Tarleton Foundation Fund

Founded by Mr. and Mrs. Tarleton as a donor advised fund.

Dr. Thomas and Patricia Tarpley Charitable Fund

Founded by Dr. Tarpley to benefit various nonprofit organizations in Frederick County.

Preston Tarleton Memorial Fund

Founded by family members for scholarships to Brunswick High School graduating seniors with preference given to those participating in baseball.

Kenneth (Bob), Mildred (Millie) and Diane Mildred Taylor Fund

Founded through Mildred Taylor's estate provisions for need-based scholarships for Frederick County students.

Alvin F. Tesmer and John J. Hayes Veterans Memorial Fund

Founded by John J. and Kay L. Hayes to support the greatest needs of veterans and their immediate family including their caregivers, spouses, and children in Frederick County and Carroll County.

Gifts to any fund are gladly accepted throughout the year, in any amount.



Mr. and Mrs. Raymond Thomas Unrestricted Endowment Fund

Founded by Mr. and Mrs. Thomas for grants.

Jane Lee Thomas Piano Scholarship Fund

Founded by daughter Julie Castillo for youth seeking piano lessons.

Dr. V.E. Gladstone Thompson and Gloria H. Thompson Fund

Founded by wife Gloria and daughter Sonya Thompson to support Asbury United Methodist Church located in Frederick.

Earlene H. and Henry J. Sr. Thornton Fund for Educational Professionals

Founded by Dr. Earlene H. Thornton to support special projects with an education focus that enhance the learning ability of students.

William "Woody" E. and Nancy Motter Thrasher Fund

Founded by Nancy Motter Thrasher in memory of her husband to provide scholarships for students studying agriculture.

Thurmont Branch Library Fund

Founded by Frederick County Public Libraries to support the Thurmont branch.

Thurmont High School Alumni Scholarship Fund

Founded by the Thurmont High School Alumni Association for descendants of Thurmont High School alumni and descendants of Catoctin High School graduating classes of 1969-1974.

Thurmont Public Library Patrons Fund

Founded by the Thurmont Public Library, Inc. to provide resources and activities for the patrons of the Thurmont Regional Library.

John H. and Donna R. Tisdale Fund

Founded by the Tisdales to provide scholarships to deserving students and grants to nonprofits.

Marvin G. and Bess L. Todd Memorial Scholarship Fund

Founded by wife Bess Todd and her children for Brunswick High School students, preferably those receiving a "B" award.

Rick Topper Charitable Fund

Founded by family members to support organizations, students, and young adults pursuing careers in the construction trades.

Transportation Field of Interest Fund

Founded by the Community Foundation to aid persons in need, and those who are disabled or elderly, with transportation concerns.

Mildred B. Trevvett Music Education Fund

Founded by niece Jane Clark Peluso to honor her dedication to music education and to support music educators through grants and/or scholarships.

"Tribute to A Friend" Scholarship Fund

Founded by Robert A. Rosensteel with donations from the Emmitsburg area, in memory of David Copenhagen, Greg Hollinger, Tom and Sharon Topper, and Terry Myers, for Emmitsburg graduating seniors.

Tribute to the Anonymous Donor Fund

Founded by the Community Foundation with a gift from an anonymous donor for operational support.

Trinity United Methodist Church Sustaining Fund

Founded by Trinity United Methodist Church to support the activities and the missions of the Church.

Henry and Katherine Tripp Charitable Fund

Founded by Mr. and Mrs. Tripp to positively impact a variety of charitable organizations, people and causes in Frederick County.

Nelson Trout Memorial Fund for Mount Hope Cemetery

Founded through Mr. Trout's estate to support the yearly maintenance of the cemetery as a historic landmark.



The Nelson and Marjorie Murphy Pittinger Scholarship Fund was established by Nelson Pittinger to honor his late wife's wishes to provide scholarships to students pursuing a career in education at Frederick Community College.

Gregory Joseph Troy Memorial Fund

Founded by mother Susan Best and brother Joshua Troy to provide scholarships for children and dependents of Frederick City and County police officers pursuing careers in law enforcement.

Truist Unrestricted Fund

Founded by the bank for the Community Foundation's grantmaking.

Harold Glen and Audrey G. Benson Trumpower Foundation Scholarship Fund

Founded by the Trumpower Foundation for students in Carroll County.

NEW Harold Glen and Audrey G. Benson Trumpower Foundation Nursing Scholarship Fund

Founded by the Trumpower Foundation for Carroll County students who are enrolled in McDaniel College's Bachelor of Science in Nursing (BSN) program.

Charles F. and Mary Frances Trunk Charitable Fund

Founded by the Trunks for scholarships to Frederick County students and grants to nonprofits.

Simon Turner Memorial Fund

Founded by parents Brent and Talia Turner to support positive impacts on children's lives in Frederick County.

Phil Tuohey/Wells House at Gale Recovery Fund

Founded by Dennis Cannon with his 2005 Wertheimer Fellow for Excellence in Volunteerism Award to recognize Mr. Tuohey's work in Frederick County toward substance dependence recovery with funding to Gale Recovery.

U-V**Undergraduate Scholarships Field of Interest Fund**

Founded by the Community Foundation for post-secondary education based on financial need.

United Way of Frederick County Endowment Fund

Founded by Donald C. Linton for operational support.

Libby Hough Van Winkle Children's Fund

Founded by parents Hammet and Jaralyn Hough to meet the special or unique needs of children, with preference to those in foster care.

V. Jeanne Vaughn Memorial Scholarship Fund

Founded by the Vaughn Family for Frederick County students studying chemistry, science education, or biochemistry at the post-secondary level.

Edgar and Geraldine Virts Memorial Fund

Founded by Mr. Virts to support nonprofit organizations serving people with Alzheimer's Disease.

Edgar and Geraldine Virts Fund for New Hope United Methodist Church of Greater Brunswick

Founded by Mr. Virts for operational support.

Geraldine Virts and Jack Brady Memorial Fund for Alzheimer's Disease and Related Disorders

Founded by Edgar Virts in memory of his late wife and his former coach to help people with Alzheimer's Disease and related disorders at Homewood Living Frederick.

Martha Murphy Virts Nursing Scholarship Fund

Founded by son Edgar Virts for nursing majors.

Martha Murphy Virts Memorial Fund

Founded by son Edgar Virts for complementary therapies for persons with Alzheimer's Disease and related disorders, disabilities, and catastrophic health issues.

Visual Arts Field of Interest Fund

Founded by the Community Foundation to support art, sculpture and photography exhibits/training for organizations and lessons for individuals.



The William L. Bruckart, III Scholarship Fund was established by wife, Peg, to honor his legacy and support graduating seniors pursuing higher education in fields such as science, the arts, or agriculture.

Nicholas Vrenios Memorial Fund

Founded by parents Anastasios and Elizabeth Kirkpatrick Vrenios for grants and scholarships supporting music and the performing arts.

W**Kevin R. and Sara J. Wade Scholarship Fund**

Founded by the Wades' estate for graduates of Seneca Valley High School, St. John's Catholic Prep, or Walkersville High School, and students pursuing a degree at Mount St. Mary's University or in Montgomery County.

Kevin R. and Sara J. Wade Special Needs Fund

Founded through the Wades' trust to provide grants to nonprofits serving families of children experiencing a catastrophic medical condition.

Walkersville High School Alumni Scholarship Fund

Founded by the Alumni Association for Walkersville High School graduates.

Walkersville United Methodist Church Fund

Founded by the Rev. James Merchant and the Church's Administrative Board for operational support.

Mr. and Mrs. Norman E. Waltz Fund

Founded by the Waltzes as an unrestricted fund.

Norman E. and Betty M. Waltz Endowment Fund

Founded by the Waltzes to support Goodwill Industries of Monocacy Valley's building maintenance.

Dan and Jackie Ward Family Fund

Founded by the Wards as a donor advised fund.

H. Deets and Juanita Warfield Donor Advised Fund

Founded by the Warfields as a donor advised fund.



Gifts to any fund are gladly accepted throughout the year, in any amount.

Mr. and Mrs. John C. Warfield Fund

Founded by the Warfields as a donor advised fund.

Zachary Greene Warfield Memorial Fund

Founded by Mr. Warfield's family to provide scholarships to graduating seniors pursuing studies in science, technology, engineering or math (STEM) at the post-secondary level, preferably Walkersville High School students, and grants supporting STEM programs for youth.

Dr. Larry J. Warner Fund

Founded by Natalie Warner in memory of her husband to support educational programs for nontraditional learners.

Lynne Marie Warner Memorial Fund

Founded through Ms. Warner's estate provisions to support charitable organizations in Frederick County.

Mildred Jonathan Warner Endowment Fund for New Spire Arts

Founded by son Jonathan Warner to support the organization.

R. W. Warner, Inc. Fund

Founded by R. W. Warner, Inc., Reese W. Warner, Jr. and Matthew M. Warner in memory of Reese W. Warner, Sr. and Mary J. Warner as a donor advised fund.

George and Peggy Waxter Fund for Mission of Mercy

Founded by husband Dr. George Waxter with his 2008 Wertheimer Fellow for Excellence in Volunteerism Award for Mission of Mercy.

Jim Webb Memorial Point of Rocks Ruritan Scholarship Fund

Founded by wife Karen Webb for students under 21 living in Point of Rocks and Tuscarora.

Weinberg Center for the Arts Endowment Fund

Founded by the Frederick Arts Council for operational support.

Wells House at Gale Recovery Fund

Founded by its board of directors for operational support.



The Christopher and Lucia Kline Family Charitable Fund was established by the Klines to provide grants to nonprofits offering mental health services and programs for dyslexia.

Ruth Ann Wells Memorial Endowment Fund for The Ranch

Founded by its board of directors with Ms. Wells' bequest to support the Ranch's activities, programs and capital needs.

Janis Miller Wertheimer Endowment Fund

Founded through Mrs. Wertheimer's estate to support community service organizations in Frederick County.

Philip and Janis Miller Wertheimer Fund

Founded through Mrs. Wertheimer's estate to provide support to Frederick Health Hospital, Evangelical Lutheran Church, Heritage Frederick, National Lutheran Home, YMCA of Frederick County and Penn Laurel Girl Scout Council.

Philip and Janis Wertheimer Fund for the Salvation Army/Frederick Corps

Founded by Mrs. Wertheimer for operational support.

Westie Fund

Founded by Charles W. and Janet E. King to support the Homewood Living Frederick Benevolent Care Fund.

What Would Stew Dew Fund

Founded by Jennifer Alcorn in memory of husband Lieutenant Andrew "Stew" Alcorn, IV, to support causes, including assisting first responders and advocating for children.

Jane White Fund for Mission of Mercy

Founded by Miriam Lane with her 2009 Wertheimer Fellow for Excellence in Volunteerism Award to support Mission of Mercy.

Nancy H. Whitney, R.N. Scholarship Fund

Founded by Mrs. Whitney's children for Brunswick High School graduates, including nontraditional students, pursuing an education in the healthcare field.

Widening Circles Society/Partners in Philanthropy Fund

Founded by the Community Foundation for operational support.

Michael J. Wilcom Agricultural Scholarship Fund

Founded by wife Evelyn Wilcom for those majoring in agriculture or a related field.

Wiley Family Scholarship Fund

Founded by C. Matt and Sandra K. Wiley for Catactin High School graduates pursuing a degree in engineering.

Will Group Fund

Founded by The Will Group Foundation, Inc. to provide grants to nonprofits in the Frederick County area that focus on supporting people in need and post-secondary scholarships to students.

DeWalt Willard Charitable Gift Fund

Founded by Mr. Willard as a donor advised fund.

De Willard Family Fund

Founded by Mr. Willard as an unrestricted fund.

M. Kate, Robert Lee and Robert Leroy Willard Scholarship Fund

Founded through Mary C. Willard's trust for those studying percussion instruments and music, in memory of Robert Lee Willard, those studying economics, banking or finance, in memory of M. Kate Willard, or those studying microbiology, in memory of Robert Leroy Willard.

Bruce and Geraldine Wilson Charitable Fund

Founded by Mr. Wilson to support Evangelical Reformed United Church of Frederick, Willow Road Residents Association, Homewood Living Foundation, University of Maryland College Park Foundation, Baltimore Symphony Orchestra, Alzheimer's Disease and Related Disorders Association, ArtSpring, Delaplaine Arts Center, Frederick Book Arts Center, Frederick Children's Chorus, and Regents of The University of Michigan.

Bob and Becky Windsor Fund

Founded by the Windsors as an unrestricted fund.

Grace Brashear Winpigler Dental Healthcare Fund

Founded by Mrs. Winpigler with her 2008 Wertheimer Fellow for Excellence in Volunteerism Award for dental healthcare of residents of Citizens Care & Rehabilitation Center and Montevue Assisted Living.

Nancy Watkins Winterberg Memorial Scholarship Fund for New Market United Methodist Church

Founded by the Church for its members.

NEW Susan Peters Roetzel Wirths Fund

Founded by the Church of the Transfiguration in Braddock Heights in memory of Susan Barbara Peters Roetzel Wirths to support youth ministry at the parish.

Charles R. Wolfe Heartly House Scholarship Fund

Founded by Heartly House's Board of Directors in honor of Mr. Wolfe for scholarships for its participants.

Women's Giving Circle of Frederick County Fund

Founded by Karlys Kline and funded through membership in the Women's Giving Circle of Frederick County to improve the lives of women and those who depend on them.

Gail A. Wood and Family Endowment Fund

Founded by Ms. Wood with her 2003 Wertheimer Fellow for Excellence in Volunteerism Award to support youth programs in Frederick County.

Workforce Development Board Youth Education Fund

Founded by the Workforce Development Board for educational support for Frederick County's youth, preferably high school students.

Jean Wright Memorial Fund

Founded by husband Harold Wright as an unrestricted fund.

X-Z**YMCA of Frederick County Financial Assistance Fund**

Founded by its board of directors to provide financial assistance to participants.

YMCA Restricted Endowment Fund

Founded by Donald C. Linton for operational support. Z

W. Meredith S. Young and Helen B. Young Scholarship Fund

Founded through the Youngs' estate provisions to further the educational goals of area students.

Meredith and Helen Young Facilities Enhancement and Preservation Fund

Founded by Historical Society of Frederick County with the Youngs' estate provisions to support the maintenance and preservation of its buildings.

Michael S. and Marlene B. Young Scholars Fund

Founded by Michael S. and Marlene B. (Grossnickle) Young for Middletown High School graduating seniors pursuing careers in business, music and education.

NEW Mayor Ron Young Tribute Sculpture Project Fund

Founded by community volunteers to support the design, creation, and placement of a statue within Carroll Creek Linear Urban Park honoring Mayor Ron Young's role in revitalizing downtown Frederick.

Youth Field of Interest Fund

Founded by the Community Foundation to support nonprofits offering aid or enrichment programs for children and youth.

Florence Zahler Memorial Cancer Support Fund

Founded by Nelson S. and Celia E. Zahler to support residents of Frederick County and the surrounding area who have been diagnosed with cancer.

Helen G. and Alfred G. Zimmerman Hood College Campus Ground Beautification Fund

Founded through Anna G. Beers' estate provisions to support campus grounds beautification at Hood College.

J. Trego and Shirley D. Zimmerman Fund for Glade United Church of Christ

and Glade Cemetery Founded by the Zimmermans to support the Church and historic cemetery.

Vaughn M. Zimmerman Fund for the Walkersville Volunteer Fire and Rescue Companies

Founded by Mr. Zimmerman with his 2015 Wertheimer Fellow for Excellence in Volunteerism Award to support Walkersville Volunteer Fire Co., Inc. and Walkersville Volunteer Rescue Co., Inc.

Gifts to any fund are gladly accepted throughout the year, in any amount.



WHAT TO KNOW ABOUT COMMUNITY FOUNDATION FUNDS

The Community Foundation was excited to work with generous donors to establish 26 new funds in fiscal year 2025. If you're interested in creating a legacy of giving, you should start by setting some goals and making a few decisions.

Do you want to make your gift now, or establish your fund with a planned gift? Do you want to provide grants and/or scholarships now or after your passing? Establishing a fund with the Community Foundation is a wonderful way to sustain a cause that is near and dear to you, support specific areas of education, honor loved ones or establish a legacy. Once you've decided on your goals, the Community Foundation staff can help you determine the type of fund that will ensure your charitable goals are met.

Gifts can be made now, or a fund can be established with a planned gift that will come to fruition after your lifetime. Either way, the Community Foundation is available to work through varying scenarios to find a path forward that best suits the needs of the individual donor.

DETERMINE A SUITABLE NAME FOR THE FUND.

There are many ways to name a fund. Many funds include the donor's name or name(s) of those being honored by the fund. Some fund names reference the specific cause or organization they benefit.

DETERMINE WHAT TYPE OF GIFT YOU WOULD LIKE TO USE TO START THE FUND.

While many funds are started with gifts of cash totaling \$25,000 or more, non-cash gifts such as real estate, securities or life insurance are also options. For gifts of \$500,000 or more, you may recommend an investment professional outside of the Community Foundation's investment pool, pending certain criteria. Your financial advisors can help you determine what type of gift to use, and the Community Foundation encourages you to consult with them prior to making your gift.

DECIDE HOW INVOLVED YOU WANT TO BE WITH THE FUND.

Do you want to review grant applications? Do you want to sit on a scholarship selection committee? Do you want the comfort of knowing that a check is sent to your favorite cause each year? Do you want your family to be involved with the fund after your passing? Your intended involvement helps to determine the type of fund that you choose.

IF YOU'D LIKE TO CONTRIBUTE LESS THAN \$25,000, DON'T WORRY.

You can "plant a seed" by starting an Acorn fund. Simply select a name for the fund and agree to grow the fund to at least \$25,000 within two years or less. Once your fund reaches \$25,000, disbursements can be made. Other ways to create impact include contributing to a field of interest fund or any of our other funds, or establishing your legacy by deciding on a planned gift. No matter how much you decide to contribute, the Community Foundation makes the act of giving easy.



C. Rodman Myers, left, Barbara Roderick, and Community Foundation trustee Brandon Cannon pose for a photo at the Cornerstone Society Luncheon in May. The Cornerstone Society honors those who have thoughtfully planned a gift to the Community Foundation in their estate.



LEARN MORE ABOUT BUILDING YOUR LEGACY!

Visit FrederickCountyGives.org/Give.

HOW FUNDS WORK

The Community Foundation of Frederick County holds two categories of funds: permanent funds and pass through funds. Permanent funds generally never spend the initial gift and subsequent gifts, with a portion of the fund supporting the charitable purpose defined by the fund's founding donor. Permanent funds include endowed funds and quasi-endowed funds. Endowed funds distribute 5% of the 12-quarter trailing average market value, never invading gift principal. Quasi-endowed funds distribute 5% of the fund's 12-quarter trailing average market value each year. Pass through funds may distribute all gifts as well as the investment return for the charitable purpose. Permanent funds and pass through funds may be any of the following types of funds: designated, unrestricted, donor advised, scholarship, field of interest, agency, project, or fiscal sponsorship. You can start a named fund for as little as \$25,000—using cash, securities, real estate, life insurance, art, or other assets. For more information about types of funds, please see **page 74**.

PROPERTY YOU CAN USE TO CREATE YOUR FUND

Sometimes people are surprised to learn that they can create a fund or add to a fund with gifts other than cash. Like cash gifts, other gift types also come with various tax benefits.



CASH

You may establish your fund by giving a check to the Community Foundation. You receive the maximum tax deduction for your contribution in the year you make it. Any unused deduction can ordinarily be used over the five succeeding years.



SECURITIES

You may donate securities to your fund. You get the maximum tax deduction, equal to the current value of the securities. If that deduction is larger than what you can use in the year of your gift, the excess amount may ordinarily be deducted over the five succeeding years.

If the securities are appreciated, you pay no capital gains tax. If you own depreciated securities, it may be best if you sell them, take the loss for personal income tax purposes, and contribute the proceeds to the Community Foundation.



CRYPTOCURRENCY

Making a gift of cryptocurrency like Bitcoin is an easy way to create a lasting impact. You may donate gifts of cryptocurrency through our website. Your gift will be processed through The Giving Block platform where it will be quickly liquidated so the contribution can be put to work right away.



REAL ESTATE

Your real estate holdings can also benefit charity. Gifts of long-term appreciated real estate offer advantages similar to gifts of appreciated securities. Real estate will be accepted by the Community Foundation if it is readily saleable and does not require long-term management. You are required to obtain an appraisal to establish the value of the real estate for your tax deduction.



LIFE INSURANCE

You may donate your life insurance policy to your fund. You receive an immediate tax deduction, usually in an amount equal to the cash surrender value. If you wish to keep the policy in force, your continued premium payments are tax deductible if the Community Foundation is the owner of the policy. If you don't want to give up the policy, you can name the Community Foundation as a full or partial beneficiary.



ART AND OTHER TANGIBLE PERSONAL PROPERTY

You may use your paintings, sculptures, jewelry, etc. to establish a charitable fund as long as the property can be sold easily. You will be responsible for obtaining an appraisal to establish the value of the personal property for your tax deduction.

WAYS TO ESTABLISH OR EXPAND A FUND

OUTRIGHT GIFT DURING YOUR LIFETIME

An outright gift is the simplest of all gifts to make and can be made now. It provides the greatest and most immediate support. The most common way to make an outright gift is a gift of cash, which can be used to establish your own fund, or can be added to an existing fund. In addition to a gift of cash, outright gifts can be in the form of publicly-traded securities or by transferring other assets directly to the Community Foundation.

BEQUEST

Perhaps you are making decisions on a new will. You have taken care of all the usual details, assigned sentimental possessions, and provided for relatives.

You can stipulate that all remaining assets go to create your fund or to add to an existing fund, possibly significantly reducing the taxes payable by your estate. Your fund will support community needs in your name permanently.

Or, you simply write a codicil (amendment) to your existing will. You state that in addition to or instead of certain provisions of that will, you would like to leave the remaining assets, or a specific dollar amount, to the Community Foundation for whatever purpose you determine. Your lawyer can assist you in making this change. The Community Foundation also has suggested language for making provisions in your will.

CHARITABLE LEAD TRUST

You may want to defer income to a later date. Or you may have provided for your children already or you may want to provide for your children in the future, but not now. With a charitable lead trust, you donate part of your estate to the trust now, and the income goes to your fund for a designated period of years. Your taxes are reduced and the property is not taxed to your children. After a period of time that you specify, the trust terminates and the assets go to your designees. The charity benefits during all those years and your designees may receive much more than they would have otherwise.

GIFTS FROM AN ESTATE OR TRUST

As the Personal Representative under a will, you are directed to allocate a certain amount of money for general charitable purposes. Some professional guidance may be helpful to you.

You may set up a fund within the Community Foundation in the name of the deceased. With the approval of the court, if necessary, you arrange to have the charitable portion of the estate paid to this fund. The Community Foundation would then assume the responsibility of carrying out the deceased's charitable interests.

LIFE INCOME (CHARITABLE REMAINDER) TRUST

You may have achieved a fairly comfortable accumulation of assets, but would like an income for yourself, your spouse, or other beneficiaries for the rest of your lives. Ultimately you want charity to benefit from your estate.

You can establish a charitable remainder trust that pays you and/or your designees for your lifetimes, with the remainder of the trust going to your fund. You receive a substantial income tax deduction and estate taxes will be reduced upon your death. If you prefer, you can establish a charitable remainder trust in your will, providing a life income for surviving beneficiaries. Because of the charitable estate tax deduction, the surviving beneficiaries may receive a larger income than would otherwise be possible.

TWO TYPES OF CHARITABLE REMAINDER TRUSTS

ANNUITY TRUST

A fixed income trust from which you or your beneficiaries will receive a set amount each year.

UNITRUST

A variable income trust from which you or your beneficiaries will receive a percentage of the trust's assets. Changes in the asset value of the trust will affect the level of your income each year.

The minimum amount recommended for a charitable remainder trust is \$100,000.

ASSIGNMENT OF TRUST FUND INCOME

You may be the beneficiary of a trust which pays you a regular income. Even though you may give some of this income to charity, you may not receive maximum tax benefits.

If you assign to your fund a portion of this annual income for the benefit of charity, you pay no further tax on this income. In addition, you may take an immediate income tax deduction for the value of this assignment. If this deduction is more than you can use in the year of the assignment, the excess may ordinarily be deducted over the five succeeding years.

CORPORATE FUNDS

Perhaps you are an executive in a business or corporation, responsible in part for corporate giving. How do you sift through the blizzard of charitable appeals?

You can establish a fund with the Community Foundation, either in the name of the corporation or an anonymous name. The Community Foundation then distributes the gift for you, relieving you of this burden.

CHARITABLE GIFT ANNUITY

When you want to make a gift of cash or appreciated property and receive fixed payments for the rest of your life, you can create a Charitable Gift Annuity agreement with the Community Foundation. At the end of your life the Community Foundation receives the remainder of the gift. A portion of most gift annuity payments are tax free, and the remainder of the income is taxed at ordinary rates and possibly capital gains rates.

TRANSFER YOUR FOUNDATION'S ASSETS

If you are a trustee of a private foundation, you may establish a fund within the Community Foundation in the name of the private foundation. After arranging to transfer all or part of the assets of the foundation to the fund, the Community Foundation takes care of all the paperwork required by the government. Investments are handled by experienced people. Taxes are no longer imposed, and the amount available for charity is increased. You are secure in knowing that the fund will be administered permanently by the Community Foundation.

TRANSFER A CHARITABLE ORGANIZATION'S ASSETS

Perhaps you are on the board of directors of a charitable organization which is terminating. You may create a fund within the Community Foundation in the name of your organization. You liquidate the assets in accordance with all laws and IRS regulations and transfer them to the fund, specifying that the fund's distribution will be used only for grants in a similar field of interest. The mission of your organization is thereby continued in perpetuity.

RS Will Wealth Management, who holds **The Will Group Fund**, made a generous contribution to **The Senior Resources Center at Spring Bank Fund**, which provides resources to assist lower-income seniors and their caregivers, enabling them to age in place.

Pictured (L-R): Paul J. McArthur, CPFA®, CRPS®, AAMS®, partner at The Will Group; William M. Coffey, CFP®, NFLPA registered player financial advisor and partner at The Will Group; Joshua D. Donofry, CIMA®, portfolio manager at The Will Group and trustee at The Community Foundation of Frederick County; Jennifer Clingan, CPA, trustee at The Community Foundation of Frederick County; and Mark Mayer, CFP®, partner at The Will Group.



Well-managed charitable funds benefit our community now and in perpetuity. Donors start funds with a minimum gift of \$25,000 to benefit the causes that they choose. These funds are then invested, with a portion of the funds spent each year according to the spending policies that the donors choose at the time the funds are established.

Professional investment managers invest the Community Foundation's assets in accordance with the Community Foundation's investment policies. Investment performance is monitored and overseen by the Investment Committee, comprised of Community Foundation trustees and others with investment expertise. The Community Foundation's financial statements, including investments, contributions, and future interests, are audited annually by an independent auditor and are available for public review.

INVESTMENT OPTIONS

Hundreds of named Community Foundation funds are invested as follows:

THE GROWTH OPTION

Growth to a certain benchmark defines this option. Almost the entire portfolio is held in equities. When the fund reaches the intended benchmark, it is transferred to another investment option to start awarding scholarships and/or grants.

THE BALANCED GROWTH OPTION

Growing the fund at an acceptable level of risk defines this option that is generally used for permanent funds. This portfolio has tiered investments, with the majority in equities and smaller amounts in other instruments.

THE SUSTAINABLE FOCUS OPTION

Investing the fund's assets in a way that promotes positive social and environmental outcomes is important to the investment strategy. This portfolio invests in tiered investments, with the majority in equities and smaller amounts in other instruments, with investment decisions made with a sustainable focus.

THE MAINTENANCE OF PRINCIPAL OPTION

Preservation of principal is this option's only objective. This portfolio is held in money market accounts and certificates of deposit.

THE ALTERNATIVE INVESTMENT OPTION

Donors establishing a fund with \$500,000 or more may recommend an investment manager and strategy, subject to the approval of the Community Foundation's Board of Trustees.

INVESTMENT MANAGERS

The Community Foundation worked with the following investment and financial managers in 2024–2025:

Accolade Partners	Crestline Offshore Associates, LTD	JLL Income Property Trust	Prudential
Artisan Partners	Dodge & Cox	JP Morgan	RBC Wealth Management
Auldbrass Partners	Eagle Capital Management	Maryland Financial Planners	Sandy Spring Bank
Base 10 Partners Management LLC	Elm Tree Funds, LLC	Merrill Lynch	Savano Direct Capital Partners, LLC
Bedrock Fund Management LLC	The Family Heritage Trust Company	Millstreet Credit Fund	StepStone Group
Boston Trust Walden	First United Bank & Trust	Morgan Stanley	Valstone Partners, LLC
Brown Advisory	Glouston Capital Partners LLC	Morgan Stanley Private Wealth Management	Vanguard
Brown Capital Management	Golub Capital	Nuveen	Wasatch Global Investors
Calvert	Harbor Funds	Palisade Capital Management	Wells Fargo Advisors
Cohen & Steers	Intrinsic Edge Capital Management LLC	Parametric Portfolio Associates, LLC	William Blair
Constitution Capital Partners LLC		Parnassus Investments	WCM International Management

Custodian: Wilmington Trust/M&T Bank | Consultant: Asset Strategy Consultants

For more information about these investment managers, their rates of return or their fees, please contact the Community Foundation at 301.695.7660.

ADMINISTRATIVE BUDGET

Because 100% of every donation is placed into a charitable fund according to the donor's instructions, the Community Foundation meets its operational expenses through:

THE ADMINISTRATIVE FUND

This permanent fund was created in 1990 to support the Community Foundation's operations and community education activities.

MISSION FEES

An annual mission fee is assessed on the market value of each component fund. Please see page 74, "Fund Types," for detailed information.

WIDENING CIRCLES AND PARTNERS IN PHILANTHROPY CAMPAIGN

This annual campaign raises money specifically for the Community Foundation to invest in community outreach to promote philanthropy. Individuals contribute to the Widening Circles campaign and businesses and civic societies contribute to the Partners in Philanthropy campaign.

For the Fiscal Year Ended June 30, 2025

The generous support of contributors to The Community Foundation of Frederick County, MD, Inc., The Community Foundation Holding Company, Inc., and the Pleasants Supporting Charitable Trust*, its supporting organizations, resulted in donations surpassing \$11.4 million for the year ended June 30, 2025.

CONSOLIDATED STATEMENTS OF FINANCIAL POSITION // June 30, 2025 (With comparative totals for 2024)

ASSETS	2025	2024
Cash and cash equivalents	\$2,005,144	\$1,406,175
Promises to give, net	\$866,381	\$130,582
Contributions receivable	\$1,900,276	\$8,459,474
Prepays and other assets	\$503,933	\$464,976
Investments at fair value	\$200,752,608	\$178,302,734
Land held for sale	\$19,500,000	\$19,500,000
Present value of remainder interests	\$5,249,651	\$4,507,514
Cash surrender value of life insurance	\$253,925	\$251,674
Furniture and equipment, net of accumulated depreciation of \$595,503 and \$579,521	\$94,666	\$112,620
Right-of-use asset – operating	–	\$70,321
TOTAL ASSETS	\$231,126,584	\$213,206,070
LIABILITIES AND NET ASSETS		
Liabilities		
Accounts payable	\$190,947	\$1,473,783
Other liabilities	\$579,029	\$315,114
Liabilities under split-interest agreements	\$2,056,529	\$2,032,202
Funds held for others	\$11,049,346	\$9,407,087
Lease liability – operating	–	\$66,301
TOTAL LIABILITIES	\$13,875,851	\$13,294,487
Net assets	\$217,250,733	\$199,911,583
TOTAL LIABILITIES AND NET ASSETS	\$231,126,584	\$213,206,070

The annual audit of The Community Foundation of Frederick County, MD, Inc, The Community Foundation Holding Company, Inc., and Pleasants Supporting Charitable Trust's consolidated financial statements for the year ended June 30, 2025, was performed by Ellin & Tucker. Their independent auditors' report and accompanying financial statements are available for review at the Community Foundation office. Also, information submitted under the Maryland Charitable Solicitations Act can be obtained from the Maryland Secretary of State.

*The Community Foundation Holding Company, Inc. was formed in 1997 as a 501c3 public charity to hold assets on behalf of The Community Foundation of Frederick County, MD, Inc. and to act as trustee for charitable trusts of which the Community Foundation is a beneficiary. Its Board of Trustees is appointed by The Community Foundation of Frederick County, MD, Inc. Pleasants Supporting Charitable Trust was created in 2018 to support the philanthropic activities of The Community Foundation of Frederick County.

The Community Foundation holds different types of funds that fall into different categories, depending on the instructions and intentions of the donor who created the fund.

PERMANENT	PASS THROUGH
<p>Is a fund where the initial gift and subsequent gifts are generally never spent, with a portion of the fund supporting the charitable purpose defined by the fund's founding donor.</p> <p>Permanent funds may be: endowed funds – distributes 5% or less calculated using a 12-quarter trailing average of the total amount of the fund, but never spending gift principal quasi-endowed funds – distributes 5% or less calculated using a 12-quarter trailing average of the total amount of the fund regardless of investment return</p>	<p>Is a fund where all gifts as well as the investment return are used for the charitable intent.</p>
<p>PERMANENT and PASS THROUGH funds fall into the following categories: <i>Please note: mission fees and minimum and scholarship amounts listed below apply to funds created on or after July 1, 2014. Please contact the Community Foundation office for information about funds established prior to July 1, 2014.</i></p>	
<p>UNRESTRICTED funds allow a donor to direct the Community Foundation to determine the most appropriate uses for the fund, creating the greatest impact possible within the community.</p> <ul style="list-style-type: none"> • annual mission fee: the greater of 1% or \$200 • minimum grant amount: \$500 • annual valuation date of April 30 	<p>FIELD OF INTEREST funds allow a donor to specify general areas to direct grantmaking, but not specific nonprofits.</p> <ul style="list-style-type: none"> • annual mission fee: the greater of 1% or \$200 • minimum grant amount: \$500
<p>DESIGNATED funds allow a donor to designate one or more specific nonprofits to be supported each year.</p> <ul style="list-style-type: none"> • annual mission fee: the greater of 1% or \$200 • minimum grant amount: \$500 	<p>AGENCY funds allow nonprofits to work with the Community Foundation to take advantage of its expertise in managing charitable funds.</p> <p>Agency Pass Through funds</p> <ul style="list-style-type: none"> • annual mission fee: the greater of 1.25% or \$375 • minimum grant amount: \$500 <p>Agency Permanent funds</p> <ul style="list-style-type: none"> • annual mission fee: the greater of 1% or \$200 • minimum grant amount: \$500
<p>DONOR ADVISED funds allow a donor to maintain an advisory role in how proceeds are disbursed.</p> <ul style="list-style-type: none"> • annual mission fee: the greater of 1.25% or \$375 • minimum grant amount: \$500 	<p>FISCAL SPONSORSHIP funds allow start-up organizations and groups addressing an emerging or short-term need to work with the Community Foundation.</p> <ul style="list-style-type: none"> • annual mission fee: the greater of 1.25% or \$375 • minimum grant amount: \$500
<p>SCHOLARSHIP funds allow a donor to provide financial assistance for academic need.</p> <ul style="list-style-type: none"> • funds under \$100,000 <ul style="list-style-type: none"> • annual mission fee: the greater of 2% or \$200 • minimum scholarship amount: \$1,000 • funds of \$100,000 or more <ul style="list-style-type: none"> • annual mission fee: the greater of 1.5% or \$200 • minimum scholarship amount: \$1,000 • participation fee: 0.5% 	<p>PROJECT funds allow unincorporated committees/consortia to support a specific initiative or short-term effort. The fund will close with the conclusion of the project.</p> <ul style="list-style-type: none"> • a fee of 2.5% on all gifts at time of contribution • a fee of 10% of project may be assessed for funds requiring additional staff support • funds have a maximum lifespan of five years with possibility of extension

The Community Foundation of Frederick County, MD, Inc. is a 501c3 public charity. A copy of the current financial statement is available by writing to the Community Foundation, 312 East Church Street, Frederick, MD, 21701 or by calling 301.695.7660 or emailing president@FrederickCountyGives.org. Documents and information submitted under the Maryland Solicitations Act are also available, for the cost of postage and copies, from the Maryland Secretary of State, State House, Annapolis, MD, 21401 or by calling 410.974.5534. The form 990/990T, an annual reporting return filed by the Community Foundation with the IRS, is available on the Community Foundation's website at www.FrederickCountyGives.org/reports.



The Community Foundation of Frederick County is confirmed to be in compliance with National Standards for U.S. Community Foundations.



ROOTED IN TRUST

The Community Foundation of Frederick County is your charitable giving partner.

Your gift made now, or your planned gift received later, will impact countless people in Frederick County through grants to nonprofits or scholarships for students. You don't have to have great wealth to make a difference, only the desire to do something meaningful with the resources you have.

To confidentially discuss your charitable intentions or legacy plans, contact our Philanthropic Services Department at **301.695.7660** or by email at b.diehl@FrederickCountyGives.org.



THE 39TH ANNUAL REPORT TO THE COMMUNITY IS MADE POSSIBLE THROUGH THE GENEROSITY OF THE FOLLOWING SPONSORS:

EMERALD

DC News Now
Ellin & Tucker
Everedy Square & Shab Row

GREEN DIAMOND

The Family Heritage
Trust Company
M&T Bank

PLATINUM

RS Will Wealth Management
William E. Cross Foundation, Inc.

GOLD

Delaplaine Foundation, Inc.
LSWG CPAs
Manpower
McNees, Wallace & Nurick
Mr. and Mrs. Philip Rauh

SILVER

ACNB Bank
Advanced Behavioral Health
Asset Strategy Consultants LLC
Constitution Capital Partners
Michael G. and Elizabeth Y. Day
The D. Hunt and
Joan Hendrickson Fund
Middletown Valley Bank
The Mr. and Mrs. Charles A.
Nicodemus Family Fund
PNC Bank
Postern
Shafdon Farms, LLC
Summers & Summers, CPAs, LLC
Mary Frances Trunk
U.S. Bulk Mail & Printing

CRYSTAL

ALL-SHRED, Inc.
Bach Real Estate
Frederick Community College
Foundation, Inc.
Frederick Event Center
Mr. and Mrs. John S. Jorgensen
The Kiwanis Club of Frederick Fund
Daniel J. Lajewski, Jr.
Neal Leasing, Inc.
N. E. "Bob" Waltz
Plumbing and Heating, Inc.
North Star Foundations, Inc.
Offutt, Horman, Burdette & May P.A.
Pearce Group Private
Wealth Management
Wells House

BRONZE

Blue Ridge Risk Partners
Ceresville Mansion
James and Sandra Cox
Emmitsburg Osteopathic
Primary Care Center
Frederick Financial Planners
Ramar Moving Systems, Inc.
Rob and Joyce Summers

COPPER

Advanced Chiropractic Center
All Around Plumbing, Inc.
Hawkins Landscaping, Inc.
Janice B. Rockwell, LLC
Rev. and Mrs. Albert K. Lane, III
Mwalimu Wilson Chepkoiit Public
Foundation USA
Parent Resource Center
Sally Arnold & Associates, Inc.
Support Unlimited Inc.
Nancy Motter Thrasher

Sponsor list current as of 10.2.25

SCAN THE QR CODE
**TO MAKE A
DIFFERENCE
TODAY**



312 East Church Street, Frederick, Maryland 21701
301.695.7660 | info@FrederickCountyGives.org
FrederickCountyGives.org

The Community Foundation of Frederick County, Inc. is a registered 501c3 nonprofit organization dedicated to connecting people who care with causes that matter.

The Community Foundation of Frederick County

@CommFndFredCo

@CommFndFredCo

The Community Foundation of Frederick County

CommunityFndFredCo